



**NATIONAL
FLUID
SYSTEMS**



Food, Beverage, Cosmetic & Pharma Product Catalogue

CONTENTS

Sanitary Fittings & Seals	Page 4
Sanitary & Water Pumps	Page 15
Industrial Valves	Page 39
Sanitary / Aseptic Valves	Page 49
Food Grade, Composite & Stainless Braided Hose	Page 60
BSP Fittings	Page 75
Sanitary Mixing & Processing Equipment	Page 79
Nitto Couplings	Page 81
Flanges	Page 84
Filters/Strainers	Page 87
Buttweld Fittings	Page 88
Pneumatic Tubing	Page 92
Tank Cleaning	Page 93
Hose Reels	Page 96
Pressure Gauges	Page 97
Flow Meters & Instrumentation	Page 99
Hose Clamps & Steam Couplings	Page 113
Steam Equipment & Valves	Page 115
Camlocks	Page 120
Washdown Guns/Equipment	Page 122
Rupture Discs	Page 124
Stainless Food Grade Tube	Page 125
Lubrication Systems	Page 128
Expansion Joints/ Food Grade Gaskets & Sealing	Page 129

ABOUT NFS

National Fluid Systems is a customer driven industrial fluid handling solutions supplier to Australian Food & Beverage industry. The company boasts over 20 years experience in fluid handling solutions along with the ability to supply solutions from some of the industries most trusted & respected brands.

We are one of Australia's only full dedicated industry specific supplier with our product range incorporating but not limited to the following products

- *Industrial Hose & Fittings
- *Screwed & Flanged Valves
- *Sanitary Processing Equipment
- *Hygienic & Aseptic Valves
- *Blenders
- *Pneumatic Tubing & Fittings
- *Camlock Fittings
- *Washdown Equipment
- *Stainless Pipe & Tube Fittings
- *Steam Equipment
- *Sanitary Seal/Gaskets
- *Quick Release Couplings

National Fluid Systems is far from just a product supplier we also have a team of engineers that can design, commission & install state of the art processing equipment.

Industry Flow Through Us!



OUR BRANDS

National Fluid System distributes the following product / brands.

- *Trelleborg Rubber Food Grade Hose
- *Yokogawa Flow Control Products
- *Keystone Sanitary Valves
- *Carraro Pressure Regulators
- *Ramex Stainless Steel Hose Reels
- *Superklean Washdown Equipment
- *Gemu Process & Aseptic Valves
- *Ashcroft Gauges & Instrumentation
- *Inoxpa Sanitary Pumps & Valves
- *Anderson-Negele Instrumentation
- *Versamatic Diaphragm Pumps
- *Plascorp Composite Hoses
- *Mouvex Hygienic Disc Pump
- *Wilden Hygienic Diaphragm Pumps
- *Utam Steam Valves
- *Alfagomma Rubber Hose
- *OMC Control Valves
- *SKF Lubrication Systems
- *Robuschi Vortex Pumps
- *Miyawaki Steam Equipment
- *Consolidated Safety Valves
- *Sacome Heat Exchangers
- *Rieger Aseptic Valves
- *Breconcherry Tank Cleaners
- *Gemmecotti Mag Drive Pumps
- *Gorman Rupp Waste Pumps
- *Vogelsang Waste Pumps
- *Fistram Hygienic Pumps
- *Nord Geared Motors
- *Saint Gobain Silicone Hoses
- *Ebara Water Pumps
- *Utam Steam Valves
- *KTM Ball Valves
- *Novus Sealing
- *Sick Instrumentation
- *PTFE-Flex Hoses
- *Burkert Valves
- *Seepex Pumps
- *Edur DAF Pumps
- *OBL Dosing Pumps
- *Weg Electric Motors
- *ASM Pumps
- *Fike Rupture Discs
- *Viking Pumps



STAINLESS SANITARY CRIMP HOSETAILS

BSM RJT MALE



25mm	SRJMHT-025
38mm	SRJMHT-038
51mm	SRJMHT-051
63mm	SRJMHT-063
76mm	SRJMHT-076
102mm	SRJMHT-102

BSM RJT FEMALE



25mm	SRJFHT-025
38mm	SRJFHT-038
51mm	SRJFHT-051
63mm	SRJFHT-063
76mm	SRJFHT-076
102mm	SRJFHT-102

BSM CIP MALE



SIZE	CODE
25mm	SFMHT-025
38mm	SFMHT-038
51mm	SFMHT-051
63mm	SFMHT-063
76mm	SFMHT-076
102mm	SFMHT-102

BSM FLAT FACE FEMALE



SIZE	CODE
25mm	SFFHT-025
38mm	SFFHT-038
51mm	SFFHT-051
63mm	SFFHT-063
76mm	SFFHT-076
102mm	SFFHT-102

TRI CLOVER



SIZE	CODE
25mm	TCHT-025
38mm	TCHT-038
51mm	TCHT-051
63mm	TCHT-063
76mm	TCHT-076
102mm	TCHT-102

BUTT WELD



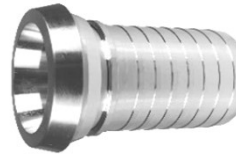
SIZE	CODE
25mm	SBWHT-025
38mm	SBWHT-038
51mm	SBWHT-051
63mm	SBWHT-063
76mm	SBWHT-076
102mm	SBWHT-102

DIN MALE



SIZE	CODE
25mm	DMHT-025
38mm	DMHT-038
51mm	DMHT-051
63mm	DMHT-063
76mm	DMHT-076
102mm	DMHT-102

DIN FEMALE



SIZE	CODE
25mm	DFHT-025
38mm	DFHT-038
51mm	DFHT-051
63mm	DFHT-063
76mm	DFHT-076
102mm	DFHT-102

BSM FLAT FACE FITTINGS

CIP Male BSM



SIZE	CODE
25mm	MCIP-025
38mm	MCIP-038
51mm	MCIP-051
63mm	MCIP-063
76mm	MCIP-076
102mm	MCIP-102

Flat Face Liner



SIZE	CODE
25mm	BFFL-025
38mm	BFFL-038
51mm	BFFL-051
63mm	BFFL-063
76mm	BFFL-076
102mm	BFFL-102

Female/ Male Reducer



SIZE	CODE
38-25mm	FFFMR-3825
51-25mm	FFFMR-5125
51-38mm	FFFMR-5138
63-38mm	FFFMR-6338
63-51mm	FFFMR-6351
76-51mm	FFFMR-7651
76-63mm	FFFMR-7663
102-76mm	FFFMR-0276

Male/Female Reducer



SIZE	CODE
38-25mm	FFMFR-3825
51-25mm	FFMFR-5125
51-38mm	FFMFR-5138
63-38mm	FFMFR-6338
63-51mm	FFMFR-6351
76-51mm	FFMFR-7651
76-63mm	FFMFR-7663
102-76mm	FFMFR-0276

Male/Male 90*Elbow



SIZE	CODE
25mm	FFMME-025
38mm	FFMME-038
51mm	FFMME-051
63mm	FFMME-063
76mm	FFMME-076
102mm	FFMME-102

Male/Female 90*Elbow



SIZE	CODE
25mm	FFMFE-025
38mm	FFMFE-038
51mm	FFMFE-051
63mm	FFMFE-063
76mm	FFMFE-076
102mm	FFMFE-102

Union



SIZE	CODE
25mm	UFF-025
38mm	UFF-038
51mm	UFF-051
63mm	UFF-063
76mm	UFF-076
102mm	UFF-102

Female/Male Adaptor



SIZE	CODE
25mm	FFMFA-025
38mm	FFMFA-038
51mm	FFMFA-051
63mm	FFMFA-063
76mm	FFMFA-076
102mm	FFMFA-102

BSM RJT FITTINGS

RJT Male



SIZE	CODE
25mm	MRJT-025
38mm	MRJT-038
51mm	MRJT-051
63mm	MRJT-063
76mm	MRJT-076
102mm	MRJT-102

RJT Liner



SIZE	CODE
25mm	RJTL-025
38mm	RJTL-038
51mm	RJTL-051
63mm	RJTL-063
76mm	RJTL-076
102mm	RJTL-102

BSM Nut



SIZE	CODE
25mm	BSMN-025
38mm	BSMN-038
51mm	BSMN-051
63mm	BSMN-063
76mm	BSMN-076
102mm	BSMN-102

BLANK NUT with Chain



SIZE	CODE
25mm	BNC-025
38mm	BNC-038
51mm	BNC-051
63mm	BNC-063
76mm	BNC-076
102mm	BNC-102

RJT Female/BSM Male Reducer



SIZE	CODE
38-25mm	RJFMR-3825
51-25mm	RJFMR-5125
51-38mm	RJFMR-5138
63-38mm	RJFMR-6338
63-51mm	RJFMR-6351
76-51mm	RJFMR-7651
76-63mm	RJFMR-7663
102-76mm	RJFMR-0276

RJT Male/Female Reducer



SIZE	CODE
38-25mm	RJMFR-3825
51-25mm	RJMFR-5125
51-38mm	RJMFR-5138
63-38mm	RJMFR-6338
63-51mm	RJMFR-6351
76-51mm	RJMFR-7651
76-63mm	RJMFR-7663
102-76mm	RJMFR-0276

Male/Male 90° Elbow



SIZE	CODE
25mm	RJMME-025
38mm	RJMME-038
51mm	RJMME-051
63mm	RJMME-063
76mm	RJMME-076
102mm	RJMME-102

Male/Female 90° Elbow



SIZE	CODE
25mm	RJMFE-025
38mm	RJMFE-038
51mm	RJMFE-051
63mm	RJMFE-063
76mm	RJMFE-076
102mm	RJMFE-102

BSM RJT FITTINGS

Male/ Male Reducer



SIZE	CODE
38-25mm	MMR-3825
51-25mm	MMR-5125
51-38mm	MMR-5138
63-38mm	MMR-6338
63-51mm	MMR-6351
76-51mm	MMR-7651
76-63mm	MMR-7663
102-76mm	MMR-0276

Female/ Female Reducer



SIZE	CODE
38-25mm	FFR-3825
51-25mm	FFR-5125
51-38mm	FFR-5138
63-38mm	FFR-6338
63-51mm	FFR-6351
76-51mm	FFR-7651
76-63mm	FFR-7663
102-76mm	FFR-0276

BSM Spanner



SIZE	CODE
25mm	BSMS-025
38mm	BSMS-038
51mm	BSMS-051
63mm	BSMS-063
76mm	BSMS-076

BSM Plastic Nut



SIZE	CODE
25mm	BPN-025
38mm	BPN-038
51mm	BPN-051
63mm	BPN-063
76mm	BPN-076

RJT Union



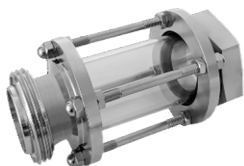
SIZE	CODE
25mm	URJT-025
38mm	URJT-038
51mm	URJT-051
63mm	URJT-063
76mm	URJT-076
102mm	URJT-102

BSM Female/BSM Male Adaptor



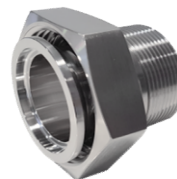
SIZE	CODE
38-25mm	FMR-3825
51-25mm	FMR-5125
51-38mm	FMR-5138
63-38mm	FMR-6338
63-51mm	FMR-6351
76-51mm	FMR-7651
76-63mm	FMR-7663
102-76mm	FMR-10276

Male/Female Sight Glass



SIZE	CODE
25mm	RJTSG-025
38mm	RJTSG-038
51mm	RJTSG-051
63mm	RJTSG-063
76mm	RJTSG-076
102mm	RJTSG-102

RJT Female/ BSP Male



SIZE	CODE
25mm	RJFBPM-025
38mm	RJFBPM-038
51mm	RJFBPM-051
63mm	RJFBPM-063
76mm	RJTBPM-076

DIN FITTINGS

WELD MALE



SIZE	CODE
25mm	DWM-025
38mm	DWM-038
51mm	DWM-051
63mm	DWM-063
76mm	DWM-076

WELD LINER



SIZE	CODE
25mm	DSL-025
38mm	DSL-038
51mm	DSL-051
63mm	DSL-063
76mm	DSL-076

BLANK NUT



SIZE	CODE
25mm	DBN-025
38mm	DBN-038
51mm	DBN-051
63mm	DBN-063
76mm	DBN-076

ROUND NUT



SIZE	CODE
25mm	DRN-025
38mm	DRN-038
51mm	DRN-051
63mm	DRN-063
76mm	DRN-076

UNION



SIZE	CODE
25mm	DSU-025
38mm	DSU-038
51mm	DSU-051
63mm	DSU-063
76mm	DSU-076

MALE/FEMALE SIGHTGLASS



SIZE	CODE
25mm	DMFSG-025
38mm	DMFSG-038
51mm	DMFSG-051
63mm	DMFSG-063
76mm	DMFSG-076

SPANNER



SIZE	CODE
25-38mm	DSS-2540
51-102mm	DSS-50100

NUT & CHAIN



SIZE	CODE
25mm	DNC-025
38mm	DNC-038
51mm	DNC-051
63mm	DNC-063
76mm	DNC-076

DIN FITTINGS

MALE/FEMALE REDUCER



SIZE	CODE
38-25mm	DMFR-03825
51-38mm	DMFR-5138
63-51mm	DMFR-6351
76-63mm	DMFR-7663
102-76mm	DMFR-0276

FEMALE/FEMALE REDUCER



SIZE	CODE
38-25mm	DFFR-3825
51-38mm	DFFR-5138
63-51mm	DFFR-6351
76-63mm	DFFR-7663
102-76mm	DFFR-0276

FEMALE/MALE REDUCER



SIZE	CODE
38-25mm	DFMR-3825
51-38mm	DFMR-3851
63-51mm	DFMR-5163
76-63mm	DFMR-6376
102-76mm	DFMR-0276

MALE/MALE REDUCER



SIZE	CODE
38-25mm	DMMR-3825
51-38mm	DMMR-5138
63-51mm	DMMR-6351
76-63mm	DMMR-7663
102-76mm	DMMR-0276

90* MALE/FEMALE ELBOW



SIZE	CODE
25mm	DMFE-025
38mm	DMFE-038
51mm	DMFE-051
63mm	DMFE-063
76mm	DMFE-076

90* FEMALE/FEMALE ELBOW



SIZE	CODE
25mm	DFFE-025
38mm	DFFE-038
51mm	DFFE-051
63mm	DFFE-063
76mm	DFFE-076

FEMALE EQUAL TEE



SIZE	CODE
25mm	DFT-025
38mm	DFT-038
51mm	DFT-051
63mm	DFT-063
76mm	DFT-076

MALE/MALE/FEMALE EQUAL TEE



SIZE	CODE
25mm	DMMFT-025
38mm	DMMFT-038
51mm	DMMFT-051
63mm	DMMFT-063
76mm	DMMFT-076

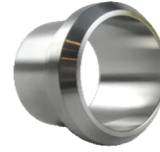
SMS FITTINGS

WELD MALE



SIZE	CODE
25mm	MSMS-025
38mm	MSMS-038
51mm	MSMS-051
63mm	MSMS-063
76mm	MSMS-076

WELD LINER



SIZE	CODE
25mm	LSMS-025
38mm	LSMS-038
51mm	LSMS-051
63mm	LSMS-063
76mm	LSMS-076

SMS BLANK CAP



SIZE	CODE
25mm	BCSM-025
38mm	BCSM-038
51mm	BCSM-051
63mm	BCSM-063
76mm	BCSM-076

SMS Nut



SIZE	CODE
25mm	NSMS-025
38mm	NSMS-038
51mm	NSMS-051
63mm	NSMS-063
76mm	NSMS-076

SPANNER



SIZE	CODE
25-38mm	SS-2538
51-102mm	SS-5102

UNION



SIZE	CODE
25mm	USMS-025
38mm	USMS-038
51mm	USMS-051
63mm	USMS-063
76mm	USMS-076

Seal - EPDM



SIZE	CODE
25mm	ESMS-025
38mm	ESMS-038
51mm	ESMS-051
63mm	ESMS-063
76mm	ESMS-076
102mm	ESMS-102

Seal - Viton



SIZE	CODE
25mm	VSSM-025
38mm	VSSM-038
51mm	VSSM-051
63mm	VSSM-063
76mm	VSSM-076
102mm	VSSM-102

TRI CLOVER FITTINGS

Tri Clover Eccentric Reducer



SIZE	CODE
38-25mm	TCR-3825
51-38mm	TCR-5138
63-38mm	TCR-6338
63-51mm	TCR-6351
76-51mm	TCR-7651
102-76mm	TCR-10276

Ferrules



SIZE	CODE
25mm	TCF-025
38mm	TCF-038
51mm	TCF-051
63mm	TCF-063
76mm	TCF-076
102mm	TCF-102

Equal Tee



SIZE	CODE
25mm	TCT-025
38mm	TCT-038
51mm	TCT-051
63mm	TCT-063
76mm	TCT-076
102mm	TCT-102

Reducing Tee



SIZE	CODE
38-25mm	TCRT-3825
51-38mm	TCRT-5138
63-38mm	TCRT-6338
63-51mm	TCRT-6351
76-51mm	TCRT-7651
76-63mm	TCRT-7663

45* Elbow



SIZE	CODE
25mm	TCE-45-025
38mm	TCE-45-038
51mm	TCE-45-051
63mm	TCE-45-063
76mm	TCE-45-076
102mm	TCE-45-102

90* Elbow



SIZE	CODE
25mm	TCE-90-025
38mm	TCE-90-038
51mm	TCE-90-051
63mm	TCE-90-063
76mm	TCE-90-076
102mm	TCE-90-102

Y Piece



SIZE	CODE
25mm	CTCY-025
38mm	CTCY-038
51mm	CTCY-051
63mm	CTCY-063
76mm	CTCY-076
102mm	CTCY-102

Cross



SIZE	CODE
25mm	TCC-025
38mm	TCC-038
51mm	TCC-051
63mm	TCC-063
76mm	TCC-076
102mm	TCC-102

TRI CLOVER FITTINGS

Tri Clover to BSM RJT Female Adaptor



SIZE	CODE
25mm	TBMFA-025
38mm	TBMFA-038
51mm	TBMFA-051
63mm	TBMFA-063
76mm	TBMFA-076

Tri Clover to BSM RJT Male Adaptor



SIZE	CODE
25mm	TBMMA-025
38mm	TBMMA-038
51mm	TBMMA-051
63mm	TBMMA-063
76mm	TBMMA-076

Tri Clover to BSP Female Adaptor



SIZE	CODE
25mm	TBPFA-025
38mm	TBPFA-038
51mm	TBPFA-051
63mm	TBPFA-063
76mm	TBPFA-076

Tri Clover to BSP Male Adaptor



SIZE	CODE
25mm	TBPMA-025
38mm	TBPMA-038
51mm	TBPMA-051
63mm	TBPMA-063
76mm	TBPMA-076

Tri Clover Clamp



SIZE	CODE
25-38mm	TCC-2538
51mm	TCC-051
63mm	TCC-063
76mm	TCC-076
102mm	TCC-102

Tri Clover Union



SIZE	CODE
25mm	TCU-025
38mm	TCU-038
51mm	TCU-051
63mm	TCU-063
76mm	TCU-076
102mm	TCU-102

High Pressure Clamp



SIZE	CODE
25-38mm	HTCC-2538
51mm	HTCC-051
63mm	HTCC-063
76mm	HTCC-076
102mm	HTCC-102

Blank Caps



SIZE	CODE
25mm	TCB-025
38mm	TCB-038
51mm	TCB-051
63mm	TCB-063
76mm	TCB-076
102mm	TCB-102

BSM & DIN SANITARY SEALS

Flat Face Seal - Viton



SIZE	CODE
25mm	FFSV-025
38mm	FFSV-038
51mm	FFSV-051
63mm	FFSV-063
76mm	FFSV-076
102mm	FFSV-102

Flat Face Seal - EPDM



SIZE	CODE
25mm	FFSE-025
38mm	FFSE-038
51mm	FFSE-051
63mm	FFSE-063
76mm	FFSE-076
102mm	FFSE-102

Flat Face Seal - CIP



SIZE	CODE
25mm	FFSC-025
38mm	FFSC-038
51mm	FFSC-051
63mm	FFSC-063
76mm	FFSC-076
102mm	FFSC-102

BSM O-Ring (EPDM)



SIZE	CODE
25mm	SORE-025
38mm	SORE-038
51mm	SORE-051
63mm	SORE-063
76mm	SORE-076
102mm	SORE-102

BSM O-Ring (Viton)



SIZE	CODE
25mm	SORV-025
38mm	SORV-038
51mm	SORV-051
63mm	SORV-063
76mm	SORV-076
102mm	SORV-102

BSM O-Ring (Silicone)



SIZE	CODE
25mm	SORS-025
38mm	SORS-038
51mm	SORS-051
63mm	SORS-063
76mm	SORS-076
102mm	SORS-102

DIN-VITON SEAL



SIZE	CODE
25mm	DSV-025
38mm	DSV-038
51mm	DSV-051
63mm	DSV-063
76mm	DSV-076

DIN-EPDM SEAL



SIZE	CODE
25mm	DSE-025
38mm	DSE-038
51mm	DSE-051
63mm	DSE-063
76mm	DSE-076

TRI CLOVER SANITARY GASKETS



EPDM

SIZE	CODE
25mm	TCGE-025
38mm	TCGE-038
51mm	TCGE-051
63mm	TCGE-063
76mm	TCGE-076
102mm	TCGE-102



VITON

SIZE	CODE
25mm	TCGV-025
38mm	TCGV-038
51mm	TCGV-051
63mm	TCGV-063
76mm	TCGV-076
102mm	TCGV-102



TEFLON

SIZE	CODE
25mm	TCGT-025
38mm	TCGT-038
51mm	TCGT-051
63mm	TCGT-063
76mm	TCGT-076
102mm	TCGT-102

Screen Gaskets

Available in 1 through micron



EPDM

SIZE	CODE
25mm	TCSGE-025
38mm	TCSGE-038
51mm	TCSGE-051
63mm	TCSGE-063
76mm	TCSGE-076
102mm	TCSGE-102



SILICONE/BUNA

SIZE	CODE
25mm	TCSGV-025
38mm	TCSGV-038
51mm	TCSGV-051
63mm	TCSGV-063
76mm	TCSGV-076
102mm	TCSGV-102



TEFLON

SIZE	CODE
25mm	TCSGT-025
38mm	TCSGT-038
51mm	TCSGT-051
63mm	TCSGT-063
76mm	TCSGT-076
102mm	TCSGT-102

Sock Gaskets available on request



Like screen gaskets they are available in 1 through 10 micron & in sizes of 1 to 6"

EBARA WATER PUMPS

3M-3 Series End Suction Pumps (ECP-3M)



- *Flow Rates:50 to 600 Lpm
- *Liquid Temp:-10 to +110c
- *304 Stainless Steel Body
- *Motor Output:0.37 to 2.2 KW (3ph)
- *Applications:Suitable for many applications including
*Water Supply *Cooling Towers *Booster Sets *Washing Machines
*Heat Exchangers & *Boosting Water Flow
- *Outlet Size:32 to 50mm
- *Head:3 to 18m
- *Working Pressure:-10 Bar

CDX-Single Impeller Pumps (ECP-CDX)



- *Flow Rates:20 to 250 Lpm
- *Liquid Temp:-10 to +90c
- *304 Stainless Steel Body
- *Motor Output:0.37 to 1.5 kw (1ph),0.37 to 1.8 kw (3ph)
- *Applications:Suitable for many applications including
*Water Supply *Cooling Towers *Booster Sets *Washing Machines
*Heat Exchangers & *Boosting Water Flow
- *Outlet Size:25mm
- *Head:12 to 41m
- * Working Pressure: 8 Bar

2CDX-Twin Impeller Pumps (ECP-2CDX)



- *Flow Rates:20 to 200 Lpm
- *Liquid Temp:-10 to +90c
- *304 Stainless Steel Body
- *Motor Output:0.75 to 1.5 kw (1ph),0.75 to 4.0 kw (3ph)
- *Applications:Suitable for many applications including
*Water Supply *Cooling Towers *Booster Sets *Washing Machines
*Heat Exchangers & *Boosting Water Flow
- *Outlet Size:25mm
- *Head:27 to 75m
- * Working Pressure: 8 Bar

Open Impeller Pumps DWO (ECP-DWO)



- *Flow Rates:100 to 1100 Lpm
- *Liquid Temp:-10 to +90c
- *304 Stainless Steel
- *Motor Output:1.1 to 1.5 kw 1ph),1.1 to 3.0 kw (3ph)
- *Max Solids:19mm
- *Applications:Suitable for many applications including
*Washing of Vegetables *Washing Systems for Bottles,Crates
*Boosting Water Flow
- *Outlet Size:50mm
- *Head:5 to 18m
- *Working Pressure: 8 Bar

EBARA WATER PUMPS

GSD-End Suction Pumps (EESP-GSD)



- *Flow Rates: 20 to 13,000 Lpm
- *Liquid Temp: -10 to +90c
- *Cast Iron Body
- *Motor Output: 1.5 to 110 kw (2p), 1.1 to 75kw (4p)
- *Max Solids: 19mm
- *Applications: *Boosting Water Flow *Cooling Towers
- *Outlet Size: 32-150mm
- *Head: 10 to 150m
- *Working Pressure: 16 Bar

3D-Monobloc Pumps (EMBP-3D)



- *Flow Rates: 100 to 1200 Lpm
- *Liquid Temp: -10 to +110c
- *Cast Iron
- *Motor Output: 1.1 to 1.2 kw (1ph), 1.1 to 11.0 kw (3ph)
- *Applications: Suitable for many applications including *Water Supply *Dairy Washdown *Boosting Waterflow
- *Outlet Size: 32 to 50mm
- *Head: 7 to 70m
- *Working Pressure: 10 Bar

3LS-Stub Shaft Pumps (ECP-3LS)



- *Flow Rates: 50 to 1200 Lpm
- *Liquid Temp: -10 to +110c
- *316 Stainless Steel Body
- *Motor Output: 0.37 to 2.2 KW (3ph)
- *Applications: Suitable for many applications including *Water Supply *Cooling Towers *Booster Sets *Washing Machines *Heat Exchangers & *Boosting Water Flow
- *Outlet Size: 32 to 50mm
- *Head: 3 to 18m
- *Working Pressure: -10 Bar

EMVS-16 Vertical Multistage Pumps



- *304 or 316 Stainless Steel Body
- *316 Stainless Steel Impeller
- *Motor Output: 0.37 to 18.5 KW (3ph)
- *Head: Up to 240m
- *Liquid Temp: -15 to +140c
- *Applications: Suitable for many applications including *Pumping hot or cold water in HVAC systems *Booster Pump *Boiler feed systems *Water Treatment Plants
- *Flow Rates: 16 to 330 lpm
- *Working Pressure: -16 Bar

High Temp Seals Available on request

EBARA SUBMERSIBLE TRADE WASTE PUMPS

DVS Cast Iron Submersible Semi Vortex Pumps (ESP-DVS)



- *Flow Rates:40 to 1,000 Lpm
- *Liquid Temp:-10 to +50c
- *Max Solids:56mm
- *Motor Output: 0.4 to 0.75 kW (1ph) , 0.75 to 3.7 kW (3ph)
- *Cast Iron Body & Impeller, & Stainless 403 Shaft
- *Outlet Size:50-80mm
- *Head:3 to 25m
- *Submergence: 8 Meters

- *Applications: *Abattoir Dairy and piggery washdown
- *Waste water applications with soft or fibrous material

DG Cast Iron Submersible Grinder Pump (ESP-DG)



- *Liquid Temp:-10 to +50c
- *Max Solids:40mm
- *Motor Output: 1.5 to 3.75 kW (3ph)
- *Cast Iron Body & Impeller, & Stainless 403 Shaft
- *Outlet Size:40 & 50mm
- *Submergence: 8 Meters

- *Applications: *Grey Waste Water Containing Solids
- *Food Processing Waste

Right Stainless Submersible Semi Vortex Pump (ESP-RSSVP)



- *Flow Rates:40 to 300 Lpm
- *Liquid Temp:-10 to +50c
- *Max Solids:40mm
- *Motor Output: 0.55 to 0.75 kW (1ph) , 0.55 to 0.75 kW (3ph)
- *Stainless 304 Body, Impeller & Shaft
- *Outlet Size:40mm
- *Head:2 to 10m
- *Submergence: 8 Meters

- *Applications: *Abattoirs *Waste Water *Food Waste
- *Contaminated Water *Chemical Waste

ROBUSCHI TRADE WASTE VORTEX PUMPS

HD Series



Maximum flow rate: 200 m³/h
Maximum pressure: 8 BAR
Maximum temperature: 120° C
Maximum head: 60 mwc

HD pumps can handle aggressive organic and inorganic liquids in chemical industries. They are also used in general industrial service, trade waste in the foodstuff industry & in water recovery process. They are made in Stainless 316 & are available in either flanged or hygenical din end connections.

RS Series



Maximum flow rate: 100 m³/h
Maximum pressure: 8 BAR
Maximum temperature: 120° C
Maximum head: 60 mwc

RS pumps can handle chemical and crystalline suspensions, all viscous liquid, liquid with high concentrations of fibrous suspensions, every kind of sludge and municipal and industrial wastewater. They are also used in general industrial service, trade waste in the foodstuff industry, dissolved air flotation systems, waste water treatment plant, sugar industry & water/solvent recovery process.

RC Series



Maximum flow rate: 800 m³/h
Maximum pressure: 10 BAR
Maximum temperature: 180° C
Maximum head: 60 mwc

RC pumps can handle chemical and crystalline suspensions, all viscous liquid, liquid with high concentrations of fibrous suspensions, industrial wastewater, every kind of sludge. They are also used foodstuffs industry waste as well as with sugar transfer.

ASM COLUMN & CANTILEVER PUMPS

C Series Cantilever Column Pumps

- *Self Priming
- *No bearings or seals submerged in the liquid
- *Can run dry indefinitely without damage
- *Handle High temperature liquids to 400c
- *Heads to 100m, Flows to 200 L/s
- *Single or three phase motor options
- *Available in stainless 316, cast iron & bronze

CA Series

- *Fitted with an open vane impeller. Suited to pumping suspended solids & semi viscous liquids

CV Series

- *Fitted with a vortex impeller. Suited to pumping difficult solids & shear sensitive liquids

CW Series

- *Fitted with a double shrouded impeller. Suited to pumping clean liquids

V Series Vertical Column Pumps

- *Self Priming
- * Internal Bearing or Cantilever Design
- *Can run dry indefinitely without damage
- *Handle High temperature liquids to 400c
- *Heads to 100m, Flows to 200 L/s
- *Column lengths to 5M
- *Available in stainless 316, cast iron & bronze
- *Single or three phase motor options

VA Series

- *Fitted with an open vane impeller. Suited to pumping suspended solids & semi viscous liquids

VV Series

- *Fitted with a vortex impeller. Suited to pumping difficult solids & shear sensitive liquids

VW Series

- *Fitted with a double shrouded impeller. Suited to pumping clean liquids



GORMAN RUPP TRADE WASTE PUMPS

Super U Series



- *Flows: 5 l/s – 75 l/s
- *Heads: 5m – 60m
- *Solids: to 32mm spheres (not stringy)
- *Size: 2", 3", 4" & 6"
- *Application: Effluent, Grey Water and Dirty Water

The U Series self priming centrifugal pumps combines the best features of quality trash pumps with increased efficiency & higher heads to pump through smaller & /or longer discharge piping systems or overcome the losses in filter systems. They have been designed for economical, heavy duty 24/7 trouble-free operation.

Ultra V Series



- *Flows: 10 l/s – 100 l/s
- *Heads: 5m – 100m +
- *Solids: 76mm spheres + Stringy
- *Size: 2", 3", 4" & 6"
- *Priming: Guaranteed Re-Primer
- *Application: Effluent to Industrial Wastewater

The Ultra V Series grey water pump is the most advanced self priming centrifugal pump range on the market today. They are high performance, high head, and high efficiency wastewater pumps, designed to deliver a long and low maintenance service life, with low cost of ownership.

10 Series



- *Flows: 2 l/s – 300 l/s
- *Heads: 5m – 40m
- *Solids: to 76mm spheres
- *Size: 1-1.5", 2", 3", 4", 6", 12"
- *Priming: Self priming pump. Not re-primer
- *Application: Effluent to Industrial Wastewater

The 10 Series grey water pump range of self priming centrifugal pumps and effluent pumps have been delivering excellent service to industry since 1946. With large inspection cover to access pump internals for service or blockage removal & a very thick vaned solids handling impeller, 10 Series pumps are the choice for many an abattoir, rendering plants & meat processing plants.

GORMAN RUPP TRADE WASTE PUMPS

Super T Series



- ***Flows:** 5 l/s – 300 l/s
- ***Heads:** 5m – 40m
- ***Solids:** to 76mm spheres + Stringy to Very Stringy
- ***Size:** 2", 3", 4", 6", 8", 10"
- ***Application:** Effluent, Grey Water and Dirty Water

The Super T Series self priming centrifugal wastewater pump has been the world benchmark for this technology since 1963. They have been designed for economical, trouble-free operation, with superior solids handling capability and a large inspection cover to access pump internals for service or blockage removal.

80 Series



- ***Flows:** 3 l/s – 100 l/s
- ***Heads:** 5m – 60m
- ***Solids:** to 60mm
- ***Size:** 1.5", 2", 3", 4", 6", 8"
- ***Application:** Effluent, Grey Water and Dirty Water

The 80 Series range of self priming centrifugal grey water pumps and effluent pumps are heavy duty 24/7, quick priming “work horses” for industry. With multi-vane impellers and a “straight-in” suction design, the 80 Series grey water pump deliver high efficiencies & quick positive self priming .

SEEPEX PROGRESSIVE CAVITY WASTE PUMPS

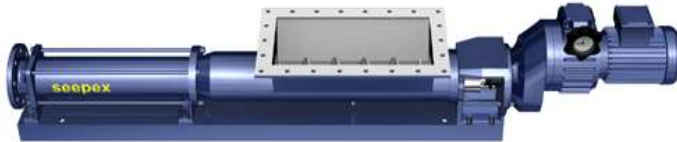
BN Series



- *Pressures: 720 PSI (48 Bar)
- *Flow Rates: 8,000 Lpm
- *Liquid Temp: -10 to +120c

This BN series pump is specially dedicated to industry markets, such as chemicals dosing or trade waste process in the food & beverage industry. Several stator options depending on the product are available. The BN series is aimed at products that flow either viscous or non viscous. The BN series are made in cast iron & are self priming.

BT Series



- *Pressures: 540 PSI (36 Bar)
- *Flow Rates: 8,000 Lpm
- *Liquid Temp: -10 to +120c

The BT series feature a rectangular feed hopper with compression zone and auger feed screw. The length of the hopper opening is variable to suit the application conditions. They are used for pumping highly viscous media with a low degree of intrinsic flowability. Like the BT series these pumps are made of cast iron material & are self priming, with available in several different stator options. The main applications in the food & beverage industry is trade waste applications.

MDP Series



- *Pressures: 180 PSI (12 Bar)
- *Flow Rates: 10 Lpm
- *Liquid Temp: -10 to +120c

The MDP series dosing pumps offering an efficient, reliable and low maintenance solution for applications where low flow, accurate dosing is required. The MDP pumps provides a smooth pumping action with no pulsation and very low shear. These pumps are often used for dosing in trade waste applications in the food, beverage & cosmetic industry.

GEMMECOTTI MAG DRIVE CENTRIFUGAL PUMPS

Magnetic drive pumps have a particular sealless design that is suitable to pump corrosive and dangerous liquids thanks to the high chemical resistance and absence of leakage and emissions. The structure is really simple so that the pump requires a very reduced maintenance with consequent save in terms of repairing and spare parts costs during the pump life. The external magnet placed on the drive shaft transmits the motion to the internal magnet connected to the impeller which rotates and moves the fluid through the pump.

HTM-P Series

- *Materials in contact with the liquid: casing and impeller PP/PVDF;
- *O-ring EPDM (standard for PP pumps) VITON (standard for PVDF pumps)
- *Static shaft: Al2O3 *rotating bushing PTFEC



Max Temperature: Up to 90c
Max Flow: 750 LPM
Max Discharge Size: 15,25,40,50mm
Max Head Range: 7 M
Max Viscosity: 200Cst
Max Pressure: 4 Bar

Applications:

- *Toxic, noxious and carcinogenic liquids
- *Abrasive Liquids
- *Caustics

HTM-S Series

- *Materials in contact with the liquid: casing and impeller 316 Stainless Steel
- *O-ring EPDM/Viton
- *Shaft: Hastelloy C276 *Rotating bushing PTFEC/GRAPHITE



Max Temperature: Up to 120c
Max Flow: 530 LPM
Max Discharge Size: 15,25,40,50mm
Max Head Range: 8 M
Max Viscosity: 200Cst
Max Pressure: 10 Bar

Applications:

- *Corrosive, toxic, noxious and carcinogenic liquids
- *Heat transfer oils
- *Sugars, Powders & other abrasive liquids
- *Caustics

Accessories

Relief valves, loading valves, pulsation dampeners, calibration cylinders, servo stroke actuators and automatic controllers are available.

GEMMECOTTI MAG DRIVE VANE PUMPS

HTP-S Series

*Materials in contact with the liquid: casing and impeller 316 Stainless Steel

*O-ring EPDM/Viton

*Shaft: Hastelloy C276

*Rotating bushing PTFEC/GRAPHITE



Max Temperature: Up to 250c

Max Flow:2,000 LPM

Max Discharge Size:10,15,20mm

Max Head Range:13 M

Max Viscosity:2,000Cst

Max Pressure:25 Bar

Applications:

*Corrosive, toxic, noxious and carcinogenic liquids

*Heat transfer oils

*Sugars, Powders & other abrassive liquids

*Caustics

HPP-PF Series

*Materials in contact with the liquid: casing and impeller 316 Stainless Steel

*O-ring EPDM/Viton

*Shaft: Hastelloy C276

*Rotating bushing PTFEC/GRAPHITE



Max Temperature: Up to 90c

Max Flow:1,000 LPM

Max Discharge Size:10,15mm

Max Head Range:5 M

Max Viscosity:2,000Cst

Max Pressure:8 Bar

Applications:

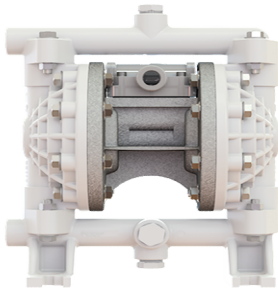
*Toxic, noxious and carcinogenic liquids

*High corrosive liquids

VERSAMATIC DIAPHRAGM DOSING PUMPS

Versamatic's bolted plastic air-operated double-diaphragm (AODD) pump allows you to transfer chemicals safely and confidently. Perfect for a wide range of applications, and available in 1/4" & 1/2" bolted metal, the rugged, leak-free bolted construction of this AODD pump offers superior chemical resistance. The multiple ported manifolds and multi-position foot mounts offer installation flexibility, allowing the unit to easily fit into existing installations. solution for caustic applications.

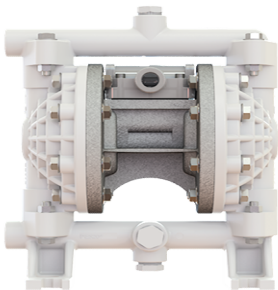
VPDP-6



Specifications

- *Liquid Inlet: 1/4" BSP
- *Air Inlet: 1/4"
- *Max Solids: 1mm
- *Max Suction Lift: 2.44m Dry,
- *Max Temp: -20 to 104c
- *PVDF or Poly Body
- *Liquid Discharge: 1/4" BSP
- *Max Flow Rates: 15 Lpm
- *Max Pressure: 8.6 bar
- *PTFE/Santoprene Diaphragm

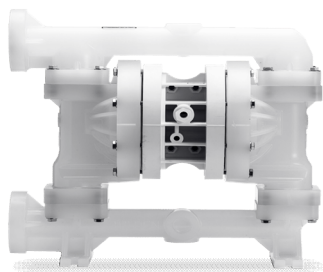
VPDP-12



Specifications

- *Liquid Inlet: 1/2" BSP
- *Air Inlet: 3/8"
- *Max Solids: 1.6mm
- *Max Suction Lift: 3.6m Dry, 9.1 m Wet
- *Max Temp: -20 to 104c
- *PVDF or Poly Body
- *Liquid Discharge: 1/2" BSP
- *Max Flow Rates: 53 Lpm
- *Max Pressure: 8.6 bar (125 psi)
- *PTFE/Santoprene Diaphragm

VPDP-25



Specifications

- *Liquid Inlet: 1" ANSI
- *Air Inlet: 3/8"
- *Max Solids: 3.2mm
- *Max Suction Lift: 3.4 m Dry, 9.4 m Wet
- *Max Temp: -20 to 104c
- *PVDF or Poly Body
- *Liquid Discharge: 1" ANSI
- *Max Flow Rates: 162 Lpm
- *Max Pressure: 8.6 bar (125 psi)
- *PTFE/Santoprene Diaphragm

OBL CHEMICAL METERING PUMPS

Blackline M Series

Robust and reliable spring return mechanical diaphragm pump. The double-layer PTFE membrane grants a high chemical compatibility, the pump body is made of aluminum and coated through a cataphoresis process to increase resistance to chemical and atmospheric agents. These features, combined with a great dosing accuracy and very low maintenance, make this pump the ideal solution for applications in the water treatment industry, power generation, pulp and paper and many more.



Specifications

- *Flow rate from 7 to 1.400 l/h (1,5 to 308 gph) in simplex configuration, also available in multiplex configuration
- *Working pressure up to 12 barg or 175 psi
- *Cataphoresis coated aluminum enclosure for greater corrosion resistance
- *AISI 316, PP, PVDF liquid end
- *Manual stroke length adjustment, electronic actuator available
- *Available with PRO electronic actuator

Blackline R Series

R series plunger metering pumps are ideal for dosing chemicals at high pressure with unsurpassed precision. A specific design allows granting a steady accuracy and great reliability. Ideal for industrial applications that require dosing of glue, emulsion, coating agents, oils and greases and many other chemicals.



Specifications

- *Flow rate from 0,8 to 1.000 l/h (0,17 to 220 gph) in simplex configuration, also available in multiplex configuration
- *Working pressure up to 100 barg or 1.450 psi
- *Capable of handling high viscosity (55.000 cps)
- *Capable of high temperature chemicals (90°C)
- *Manual stroke length adjustment, electronic actuator available
- *Available with PRO electronic actuator
- *2% accuracy over a 100:1 turndown ratio

VOGELANG TRADE WASTE PUMPS

VX 100 Series



- *Flows: 833 Lpm
- *Free Passage: 20 mm
- *Size: 2", 3", 4", 6", 8", 10"
- *Pressure: 10 bar

The rotary lobe pumps in the VX100 series are available in four sizes, offering the advantages of the Vogelsang VX series for small to medium capacities of up to 50 m³/h & pressures up to 10 bar. Special options, such as a sophisticated lightweight concept with aluminum components, a directly flanged electric motor, or the PTB-certified A1 design with flame trap, make the VX100 series rotary lobe pumps the ideal solution for simple to highly specialized applications. They are the economic solution for a wide variety of applications in industry, waste water technology & transport – particularly where there is a need for self-priming, dry-running-resistant, easy to maintain and efficient pump technology.

Applications: *Waste water and sewage treatment *Membrane filtration *Sludges *Tankers
*Paints and varnishes *Abattoirs *Chemical Transfer

VX 136 Series



- *Flows: 6,006 Lpm
- *Free Passage: 40 mm
- *Size: 2", 3", 4", 6", 8", 10"
- *Pressure: 16 bar

The VX136 series stands out for its compact type of construction and its wide range of models & options. Six sizes in 14 different types of construction offer capacities of up to 364 m³/h and enable pressures of up to 16 bar. Rotary lobe pumps in the VX136 series are easy to handle, reliable to operate and easy to maintain, just like all the pumps in the VX series. Special options such as the modular InjectionSystem, radial and axial wear plates, or special materials like ADI, stainless steel or nickel alloys form the basis for a design that is optimally adapted to the specific application. Thanks to this variety of design options, the rotary lobe pumps in the VX136 series have proven their worth over decades in the industrial, waste water technology, agricultural and biogas sectors, as well as in transport.

Applications: *Waste water and sewage treatment *Membrane filtration *Sludges *Tankers
*Paints and varnishes *Abattoirs *Chemical Transfer

INOXPA SANITARY CENTRIFUGAL PUMPS

Hyginox SE-Centrifugal Pump (ICP-HSE)



- *Max Flow Rates:2165 Lpm
- *Liquid Temp:-10 to +120c
- *Max Working Pressure:10 Bar
- *Max Speed:3500 Rpm
- *316 Stainless Steel Body

Hyginox SE is a close-coupled food-grade centrifugal pump with sanitary design, compact and efficient. It is made of a cold-formed stainless steel casing, stainless steel open impeller, mechanical seal, pump cover, lantern and shaft, connected to the motor shaft by mechanical compression. Applications include process pump in the dairy, beverage, pharmaceutical and cosmetic industries.

Prolac Centrifugal Pump (ICP-HCP)



- *Max Flow Rates:1,082 Lpm
- *Liquid Temp:-10 to +120c
- *Max Working Pressure:16 Bar
- *Max Speed:3600 Rpm
- *316 Stainless Steel Body

PROLAC HCP is a range of close-coupled centrifugal pumps with hygienic design, compact and highly efficient. It is made of a cold-formed stainless steel casing, impeller, mechanical seal, pump cover, lantern and shaft, connected to the motor shaft by mechanical compression. The pump is EHEDG certified, it is especially designed for CIP/SIP without disassembly. The Prolac is suitable for applications requiring a high level of hygiene, gentle handling of the product and resistance to chemical agents. This centrifugal pump is particularly suitable as main process pump in the dairy, beverage, pharmaceutical and cosmetic industries.

Aspir Side Channel Pump (ISP-ASP)



- *Max Flow Rates:1,082 Lpm
- *Liquid Temp:-10 to +120c
- *Max Working Pressure:10 Bar
- *Max Speed:1800 Rpm
- *316 Stainless Steel Body

The Aspir pump is a sanitary side-channel self-priming pump suitable for use in the food-processing, pharmaceutical and chemical industries. It is specially designed for pumping materials containing air or gas, and it can also be used for negative suction with prior priming as well as with filtration equipment. It can be used with wine, oil, syrups, volatile products, syrups, volatile products such as alcohol, acetone and other solvents, or with products at temperatures close to boiling point. However the the main use of this pump is for CIP return.

INOXPA SANITARY PUMPS

Flexible Impeller Pump (IFIP-RF)



- *Max Flow Rates:500 Lpm
- *Liquid Temp:-10 to +80c
- *Max Working Pressure: 4 Bar
- *Max Speed:1450 Rpm
- *316 Stainless Steel Body

The RF pump is a flexible impeller pump. Due to the design, these pumps are reversible and self priming and can be used in suction from a maximum height of 5 meters. This type of pump is designed to pump products of both low and high viscosity as well as materials containing particles or gases. The main applications are transfer of dairy products, edible oils, wine, concentrates, cream and beverages in general.

Din-Food Hi Flow Hygienic Pump (ICP-DIN)



- *Max Flow Rates:16,600 Lpm
- *Liquid Temp:-10 to +120c
- *Max Working Pressure:10 Bar
- *Max Speed:3600 Rpm
- *316 Stainless Steel Body

The DIN-FOOD pump is a hygienic high capacity centrifugal pump (up to 1000 m³/h) designed to cater for an unfulfilled need in the food-processing and chemical and pharmaceutical industries. The applications of the high-flow centrifugal pump include processes in the brewing, dairy and beverage industries in general, as well as in ultra-filtering processes.

Helicoildal Impeller Pump (IHIP-RV)



- *Max Flow Rates:3600 Lpm
- *Liquid Temp:-10 to + 120c
- *Max Working Pressure: 10 Bar
- *Max Speed:1800 Rpm
- *316 Stainless Steel Body

The RV centrifugal pump with helicoildal impeller is the best solution for the transfer of liquids with solid particles or medium viscosity products that cannot be pumped with an ordinary centrifugal pump. Due to the helicoildal shape of the impeller, the transfer of the product is gentle and without clogging. It is ideal for applications of the transfer of pieces of fruit or whole fruits, olives, slices of orange, mushroomsvegetables, fish, etc.

INOXPA SANITARY LOBE PUMPS

SLR Sanitary Lobe Pump (ILP-SLR)



- *Max Flow Rates:2668 Lpm
- *Liquid Temp:-10 to +120c
- *Max Working Pressure:16 Bar
- *Max Speed:950 Rpm
- *316 Stainless Steel Body

The SLR pump is a positive displacement rotary lobe pump of a sanitary design suitable for use in dairies, food-processing & wineries. This rotary lobe pump is perfect for managing all kinds of fluid, of either low or high viscosity as well as for filtering and bottling applications. Products containing fragile solids such as junket can be pumped without damage thanks to the specially designed lobes.

TLS Sanitary Lobe Pump (ILP-SLR)



- *Max Flow Rates:500 Lpm
- *Liquid Temp:-10 to +120c
- *Max Working Pressure:12 Bar
- *Max Speed:950 Rpm
- *316 Stainless Steel Body

The TLS pump is a **positive displacement rotary lobe pump** designed according to sanitary requirements. The pump has a reduced size is a highly efficient & reliable, it is ideal for managing all kinds of fluids in both high & low viscosity. It is commonly used for Filtering in bottling applications. Products containing fragile solids such as junket can be pumped without damaged thanks to the specially designed lobes.

HLR Hygienic Lobe Pump (ILP-HLR)



- *Max Flow Rates:2668 Lpm
- *Liquid Temp:-10 to +120c
- *Max Working Pressure:16 Bar
- *Max Speed:950 Rpm
- *316 Stainless Steel Body

The HLR pump is a hygienic rotary lobe pump designed in compliance with the EHEDG specifications for plants and processes that comply with the strictest hygienic requirements. Due to the low working speed, the rotary lobe pump is characterised by a gentle pumping and low shear of the product causing less damage possible. This hygienic lobe pump is an ideal pump for the transfer of all types of liquids (from 1 to 1.000.000 cP) and liquids with solid particles (curd, biologic cultivations, etc.).

VIKING GEARED PUMPS

The Universal Seal pumps are designed for a broad range of applications requiring continuous duty at pressures up to 200 psi. Even higher pressures are possible with high fluid viscosities at reduced operating speeds (consult factory).

This Series features 16 different sizes with flows to 1,600 GPM (364 m³/h), with four materials of construction options. They are applied to both thin and thick liquids, & operate equally well in either direction. They are also capable of operating under suction lift conditions.

Features

- *Positive Displacement, Internal Gear pumping principle.
- *Comes in four materials of construction: Cast Iron, Ductile Iron, Steel Externals & Stainless Steel
- *Seal options include packing, single component seals, cartridge lip seals and cartridge single and double mechanical seals. Various seal flush plans are available
- *The series is available in a jacketed version. Pumps come with an internal relief valve on standard design, jacketed head or jacket plate is provided on jacketed models.

Applications: Chocolate, Edible Oils, Peanut Butter, Cooking Oils, Liquid Sugar, Syrup, Margarine, Honey, Soaps, Shampoos, Alcohols & Molasses.

124/224 Series



- *Sizes: 1" - 4" *Max Flow: 1,130 Lpm
- *Max Pressure: 200 PSI (14 BAR)
- *Temperature Range: -60 to 230 C
- *Max Speed: 1,750 Rpm
- *Max Viscosity: 2,000,000 SSU (431,000 cSt)
- *Body Material: Cast Iron & Stainless Steel

4124/4224 Series



- *Sizes: 1" - 4" *Max Flow: 1,900 Lpm
- *Max Pressure: 200 PSI (14 BAR)
- *Temperature Range: -60 to 230 C
- *Max Speed: 1,750 Rpm
- *Max Viscosity: 2,000,000 SSU (431,000 cSt)
- *Body Material: Cast Iron

8124 Series (Mag Drive)



- *Sizes: 1" - 6" *Max Flow: 2,271 Lpm
- *Max Pressure: 300 PSI (21 BAR)
- *Temperature Range: -60 to 350 C
- *Max Viscosity: 2,000,000 SSU (431,000 cSt)
- *Body Material: Cast Iron & Stainless Steel

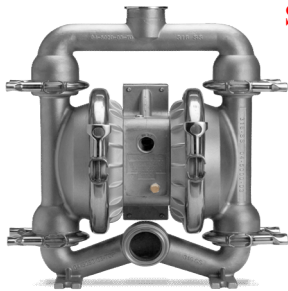
WILDEN SANITARY DIAPHRAGM PUMPS

The Saniflo FDA Series pumps are designed for standard food applications that don't require the Hygienic™ Series (HS) design or clean-in-place (CIP) capability. They are well suited for sanitary applications moving high-acid, high-sugar and high-fat media. With simple installation and robust design, FDA pumps comply with FDA, CE, EC 1935/2004 and ATEX requirements.

Applications

Cottage Cheese, Juices, Beer, Meat Mince, Chicken Breasts, Chicken Wings, Chicken Tenders, Spirits, Syrups, Glucose, Food Creams, Jams, Mayonnaise, Molasses, Pizza Sauces, Pie Fillings, Tooth Paste, Shampoos & Conditioner, Lotions, Gels, Soaps, Foundations & Suncreams.

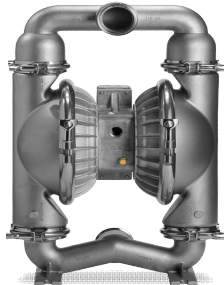
PS4SA



Specifications

- *Liquid Inlet: 1.5" BSP
- *Air Inlet: 3/4"
- *Max Solids: 4.6mm
- *Max Suction Lift: 7.0m Dry, 8.5 m Wet
- *Max Temp: -20 to 104c
- *PVDF or Poly Body
- *Liquid Discharge: 1.5" BSP
- *Max Flow Rates: 310 Lpm
- *Max Pressure: 8.6 bar (125 psi)
- *Liquid Connection: Tri Clover
- *PTFE/Santoprene Diaphragm

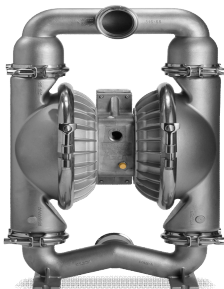
PS8SA



Specifications

- *Liquid Inlet: 2"
- *Air Inlet: 3/4"
- *Max Solids: 6.4mm
- *Max Suction Lift: 7.2m Dry, 9.0m Wet
- *Max Temp: -20 to 104c
- *PVDF or Poly Body
- *Liquid Discharge: 2"
- *Max Flow Rates: 700 Lpm
- *Max Pressure: 8.6 bar (125 psi)
- *Liquid Connection: Tri Clover
- *PTFE/Santoprene Diaphragm

PS15SA



Specifications

- *Liquid Inlet: 3"
- *Air Inlet: 3/4"
- *Max Solids: 9.6mm
- *Max Suction Lift: 6.6m Dry, 8.6m Wet
- *Max Temp: -20 to 104c
- *PVDF or Poly Body
- *Liquid Discharge: 3"
- *Max Flow Rates: 927 Lpm
- *Max Pressure: 8.6 bar (125 psi)
- *Liquid Connection: Tri Clover
- *PTFE/Santoprene Diaphragm

FRISTRAM SANITARY CENTRIFUGAL PUMPS

FPC Series (FCP-FPC)



- *Max Flow Rates:1,583 Lpm
- *Max Pressure:10 Bar
- *Liquid Temp:-10 to +150c
- *Max Viscosity:800 Cp
- *Din or Tri Clamp Connections (1.5-4")

The Fristam FPC pump offers superior performance with gaseous liquids and in CIP-return applications. It combines Fristam's proven impeller with a rotor screw. This clever design results in a low-noise hybrid that very efficiently pumps liquids with a significant gas content. The FPC pump is also suitable for emptying tanks.

FPH Series (FCP-FPH)



- *Max Flow Rates:9,166 Lpm
- *Max Pressure:80 Bar
- *Liquid Temp:-10 to +140c
- *Max Viscosity:800 Cp
- *Din or Tri Clamp Connections (1.5-6")

The Fristam FPH features specific advantages for high-pressure applications up to 80 bar. It can therefore also be used as a booster pump in filtration technology. It is Hygienic, Gentle & exceptionally low-maintenance, durable, highly economical and, due to its heavy-duty components, very robust.

FZ Series (FCP-FZ)



- *Max Flow Rates:1,166 Lpm
- *Max Pressure:15 Bar
- *Liquid Temp:-10 to +140c
- *Max Viscosity:2,000 Cp
- *Din or Tri Clamp Connections (1.5-6")

The FZ is a reversible, self-priming pump that offers exceptional precision for the complete evacuation of tanks and lines. The FZ is characterised by its impressive performance when pumping highly viscous products.

SEEPLEX HYGIENIC PROGRESSIVE CAVITY PUMPS

BSCO Series Hygienic Pump



- *Pressures: 360 PSI (24 Bar)
- *Flow Rates: 2,000 Lpm
- *Liquid Temp:-10 to +120c

The BCSO series pumps are equipped with open aseptic joints that can be cleaned without leaving residues through CIP continuous cleaning. They meet highest demands on hygienic cleanliness and on corrosion and wear resistance. The open fork joint features an especially shaped coupling rod & the rotor or plug-in shaft head. Apart from that, it is made up of only two components – the bolt & the circlip. For higher pressures and conveying capacities, additionally offers a newly developed, open pin joint. Service work can be performed easily and rapidly without the need for special tools. Just like all the pumps of the BCSO range, these joint designs comply with the regulations of the 3A-Sanitary Standards of the USA and the EHEDG directives.

BTCS Series Hygienic Pump with Hopper & Auger Screw



- *Pressures:360 PSI (24 Bar)
- *Flow Rates: 2,000 Lpm
- *Liquid Temp:-10 to +120c

The BTCS sanitary food grade range of progressive cavity pumps features a feed hopper with a cylindrical/conical compression zone. Highly-viscous conveying media with a low degree of flowability are fed to the conveying elements rotor and stator through the auger feed screw on the coupling rod. Optimum filling of the conveying chamber is achieved through the priming pressure generated in the compression zone.

MDC Series Hygienic Caustic Dosing Pump



- *Pressures:360 PSI (24 Bar)
- *Flow Rates: 10 Lpm
- *Liquid Temp:-10 to +120c

The MDC range of pumps are equipped with newly developed open aseptic fork joints that can be cleaned without leaving residues through CIP continuous cleaning. They meet highest demands on hygienic cleanliness and on corrosion and wear resistance. This is achieved through the special shape of the rotor/plug-in shaft coupling rod head. Since the open joint is made up of only 2 components – the bolt and the circlip – service work can be performed easily and rapidly without the need for special tools. The pumps of the MDC range comply with the regulations of the 3A-Sanitary Standards of the USA.

MOUVEX HYGIENIC ECCENTRIC DISC PUMPS

SLS Series



- ***Temperature:**-15 to 110
- ***Operating Pressure:** 6 Bar
- ***Max Viscosity:**36,000 Cst
- ***Max Flow Rates:**600 Lpm
- ***Inlet/Outlet Size:**1.5-3"

Designed without mechanical seals, packing or magnetic drive, the SLS Series features a unique seal-less design with double stainless steel bellows to ensure long life and product safety. The SLS Series provides very high suction and discharge pressures which allow it to self-prime and fully strip lines, maximizing product recovery.

Applications

Chocolate, Yeast, concentrate, Glucose, Fruit Juice, Flavor, Alcohol, Glucose, Ointment, Syrup, Creams, Suppository & Shampoo .

Features

- Clean in place (CIP) and Sterilize in place (SIP) for the ultimate in convenience and cleanliness
- Extremely accurate flow volume even at low speeds
- Can run run dry for up to 5 minutes, and
- Extremely gentle, pulse-free flow to protect shear-sensitive products
- Self-compensating eccentric disc principle provides consistent flow rates over a long period of time

Micro C Series



- ***Temperature:**-15 to 110
- ***Operating Pressure:** 3 Bar
- ***Max Viscosity:**2,000 Cst
- ***Max Flow Rates:**5 Lpm
- ***Inlet/Outlet Size:**1"

The Unique seal-less design features a Stainless Steel bellows which ensures durability, safety and product containment. The Micro C Series provides very high suction and discharge pressures which allows it to self prime and fully strip lines, maximizing product recovery.

Applications

Dairy products, beverage, baked goods, confectionary, canned food, animal food, cereals & almost all cosmetic products.

Features

- Eccentric disc design allows for consistent flow and improved energy savings
- Extremely gentle, pulse-free flow to protect shear-sensitive product
- Reduced maintenance with no mechanical seals or timing gear
- Clean in place (CIP) and sterilize in place (SIP) for the ultimate in cleanliness

MOUVEX HYGIENIC ECCENTRIC DISC PUMPS

S Series



- *Max Flow Rates:200 Lpm
- *Max Pressure:6 Bar
- *Liquid Temp:-10 to +80c
- *Max Viscosity:15,000 Cp
- *Din or Tri Clamp Connections (1.5-3")

Mouvex® S Series Eccentric Disc Pumps have been specifically designed for transferring sensitive products. These self-priming pumps feature quick and easy hand cleaning as well as clean-in-place (CIP) capabilities, critical considerations for hygienic applications.

Applications:Facial Cream, Gel Shampoo,Body Lotions,Toothpastes,Syrup & Ointment
Yoghurts,Sauces,Liquid Sugar,Whey, Fruit Puree & Concentrated milk

Features

- *Leak-free pumping without the need for magnetic couplings or mechanical seals
- *Self-priming with strong suction power
- *Dry running up to five minutes
- *Outstanding volumetric efficiency
- *Ability to pump low and high viscosity products
- *Ability to drain piping (inlet and outlet)
- *Low shear rate
- *Low pulsation effect

H-Flo Series



- *Max Flow Rates:1,083 Lpm
- *Max Pressure:10 Bar
- *Liquid Temp:-10 to +100c
- *Max Viscosity:10,000 Cp
- *Din or Tri Clamp Connections (1.5-3")

Mouvex® H-FLO 65 Seal-Less Eccentric Disc Pumps have been designed for use in a wide range of pumping applications in the food, cosmetic and pharmaceutical industries, all of which require extremely hygienic operations. The H-FLO pump delivers very high suction & discharge pressures that allow it to self-prime & fully strip lines, a critical option when maximizing product recovery.

Applications:Flavor, Sauce, Chocolate, Glucose,Yeast, Concentrate, Glucose, Fruit Juice,
Ointment, Syrup, Cream & Shampoo.

Features

- *Provides consistent and efficient flow with a wide range of viscosities
- *Eccentric disc design allows for consistent flow and improved energy savings
- *Extremely gentle, pulse-free flow to protect shear-sensitive products
- *Clean in place (CIP) and sterilize in place (SIP) for the ultimate in convenience and cleanliness

FRISTRAM SANITARY PUMPS

FKL Series Lobe Pump



- Max Flow:** 2,000 LPM
- *Liquid Temp:** -10 to +140c
- *Max Viscosity:** 1,000 Cp
- *Max Discharge Pressure:** 35 Bar
- *Din or Tri Clamp Connections (1.5-6")**

With its perfectly balanced rotor, the FKL is ideally suited for operation at high differential pressures. It is specifically designed to endure pressure peaks. The FKL series is suitable for high flow rates of up to 120 m³/h, as well as for CIP and SIP.

FDS Double Screw Pump



- Max Flow:** 3,000 LPM
- *Liquid Temp:** -10 to +140c
- *Max Viscosity:** 1,000 Cp
- *Max Discharge Pressure:** 25 Bar
- *Din or Tri Clamp Connections (2-6")**

The Fristam FDS combines all the advantages of double-screw technology with the company's traditionally high quality standards. This positive displacement pump is ideal for the most viscous products whilst also being capable of reaching higher speeds of up to 3,600 min⁻¹. Consequently, it can transport significant amounts of any low-viscosity medium, for example water or detergent solution. This renders the use of an additional pump for cleaning processes obsolete. The Fristam FDS can handle extreme viscosities and easily copes with high differential pressures.

EDUR CENTRIFUGAL DAF PUMP

LBU Multiphase Pump



Max Temperature: Up to 220c

Max Flow:6,000 LPM

Max Head Range:400 M

Max Viscosity:60 mm²/s

Max Pressure:40 Bar

The EDUR LBU multiphase pump is a multi-stage centrifugal pump with the unique capability of being able to pump a liquid/gas mixture. The centrifugal pump is constructed of either C.I./ Bz/ SS, Nodular Cast Iron, All-Bronze, Stainless Steel, or Super-Duplex Stainless Steel construction, so may be used to handle a variety of liquids. Air, Oxygen, Carbon Dioxide and Ozone gases can be introduced into the suction line and transported and used to mix or disperse the gases. This makes the pump ideal for DAF plants, where the multiphase pumps provide the task of air saturation without the use of compressed air (no compressor, air saturation tank or associated controls).

PBU Multiphase Pump



Max Temperature: Up to 140c

Max Flow:1,000 LPM

Max Head Range:250 M

Max Viscosity:115 mm²/s

Max Pressure:40 Bar

The EDUR PBU multiphase pump is a single-stage peripheral centrifugal pump with the unique capability of being able to pump a liquid/gas mixture. The centrifugal pump is constructed of stainless steel, so may be used to handle a variety of liquids. Air, Oxygen, Carbon Dioxide and Ozone gases can be introduced into the suction line and transported and used to mix or disperse the gases. This makes the pump ideal for DAF plants, where the multiphase pumps provide the task of air saturation without the use of compressed air (no compressor, air saturation tank or associated controls).

CONSOLIDATED SAFETY VALVES

F1541 Flanged with Lever



Features

- *Bronze Body
- *Stainless Disc
- *Stainless Spring
- *-28 to +230c
- *Wing Guided Disc
- *Full Lift
- *BSP Screwed or ANSI 150/300
- *Bronze Bonnet
- *Stainless Seat
- *Stainless Spindle
- *348 PSI (23 Bar)
- *Medium Capacity

Applications:

- *Gas *Air *Steam *Oil *Water

INLET	OUTLET
20mm	20mm
25mm	25mm
40mm	40mm
50mm	50mm
65mm	65mm

1543 Flanged with Lever



Features

- *Bronze Body
- *Forged Brass Disc
- *Stainless Spring
- *-28 to +230c
- *Wing Guided Disc
- *Full Lift
- *BSP Screwed or ANSI 150/300
- *Bronze Bonnet
- *Forged Brass Seat
- *Brass Spindle
- *297 PSI (20 Bar)
- *Large Capacity

Applications:

- *Gas *Air *Steam

INLET	OUTLET
15mm	20mm
20mm	25mm
25mm	40mm
40mm	50mm
50mm	65mm

F1811 Flanged with Lever



Features

- *Alloy Body
- *Stainless Disc
- *Alloy Spring
- *-28 to +605c
- *Wing Guided Disc
- *Full Lift
- *ANSI 150/300
- *Bronze Bonnet
- *Stainless Seat
- *Stainless Spindle
- *348 PSI (23 Bar)
- *Medium Capacity

INLET	OUTLET
40mm	80mm
50mm	100mm
65mm	150mm
80mm	200mm
100mm	250mm
150mm	300mm

Available in Screwed or Flanged Connection as well ASME1 if required

OMC CONTROL VALVES

RA10 Self-Acting Pressure Reducer

Single seat self-acting pressure reducers for steam, water, air & other types of non-hazardous fluids (Group 2 Directive 2014/68/EU). Equipped with balancing bellows and a large section driven plug, they allow an accurate regulation in any process condition. Adjustment of the calibration range is extremely simple as it can be carried out with a common spanner wrench without the aid of special tools. The "Quick-change" actuator makes the reducer setting range extremely fast even if already mounted on the plant. From 1" to 4" - ANSI 150/300.



- ***Sizes:** 1/2" to 4"
- ***Materials:** Carbon & Stainless Steel & Cast Iron
- ***Max Upsteam Pressure:** (ANSI 150): 20 Bar
- ***Max Upsteam Pressure:** (ANSI 300): 25 Bar
- ***Max Temp (Metallic Seat):** 300c
- ***Max Temp (Soft Seat):** 200c
- *Quick Change Actuator *10:1 Reduction Ratio

RD10 Self-Acting Pressure Reducer

Single seat self-acting pressure reducers for steam, water, air & other types of non-hazardous fluids (Group 2 Directive 2014/68/EU). Equipped with balancing bellows and a large section driven plug, they allow an accurate regulation in any process condition. Adjustment of the calibration range is extremely simple as it can be carried out with a common spanner wrench without the aid of special tools. The "Quick-change" actuator makes the reducer setting range extremely fast even if already mounted on the plant. From DN15 to DN100 - PN16/25/40.



- ***Sizes:** 1/2" to 4"
- ***Materials:** Carbon & Stainless Steel & Cast Iron
- ***Max Upsteam Pressure:** (PN16): 16 Bar
- ***Max Upsteam Pressure:** (PN 25.40): 25 Bar
- ***Max Temp (Metallic Seat):** 300c
- ***Max Temp (Soft Seat):** 200c
- *Quick Change Actuator *10:1 Reduction Ratio

OMC SANITARY CONTROL VALVES

S100 Hygienic Control Valve for CIP Applications



Features:

Sizes from **DN15 to DN100**
Nominal Pressure 10 bar

Valve Body: Stainless Steel
Temperature range -15 ÷ 160°C

The S100 is a angle valve with pneumatic actuator able to setting up pneumatic positioner or electropneumatic positioner. The valve body is made in stainless steel and special care it taken to avoid dead spots. The clamp type coupling between the valve body and the intermediate body enables a quick dismounting, which is also ideal for cleaning in place (CIP method).

S250 3-port Hygienic Mixing Valve



Features:

Sizes from **DN15 to DN100**
Nominal Pressure 10 bar
Leakage Class Std V or VI

Valve Body: Stainless Steel
Temperature range -15 ÷ 160°C
PTFE/GR soft seal Class VI° (*)

The S250 is a 3 Way control mixing valve used to mixing two fluid and to send to one outlet. This valve is used in the industrial sectors such the food, pharmaceutical, chemical and cosmetic, where the high hygienity is one of the essential characteristics. The seal system can be metallic or with soft insert to give perfect seal. This valve is also suitable for Cleaning In Place (CIP) applications.

S260 3-port Hygienic Diverting Valve



Features:

Sizes from **DN15 to DN100**
Nominal Pressure 10 bar
Leakage Class Std V or VI

Valve Body: Stainless Steel
Temperature range -15 ÷ 160°C
PTFE/GR soft seal Class VI° (*)

This S260 is a 3-port diverting valve used to deviate the passage fluid. This valve is use in industrial sector such the food, pharmaceutical, chemical & cosmetic where the high hygienic standards are required. The regulation system is a shutter that can be linear or equipcentage. The seal system can be metallic or with soft insert to give perfect seal. This valve is also suitable for Cleaning In Place (CIP) applications.

OMC CONTROL VALVES

V100 Compact 2-port Control Valve



Features:

Sizes from **DN15 to DN100**

Flanged PN16, PN25 or PN40

Leakage Class Std VI

Suitable for either Pneumatic or Electric Actuators

Valve Body: Ductile Iron

Temperature range -15 ÷ 350°C

PTFE/GR soft seal Class VI° (*)

The V100 single seated control valves are equipped of two-way body with in-line straight connections. The V100 valves has been designed to assure an accurate control in any process condition. Their wide application ranges allows to use the V100 with the most common process fluids such as water, superheated water, steam, air gas and other fluids.

KD10 Heavy Duty 2-port Control Valve



Features:

Sizes from **DN15 to DN100**

Flanged PN16, PN25 or PN40

Valve Body: Carbon or Stainless Steel

Reduced Bore, Microflow Trims, Cage Trim

Suitable for either Pneumatic or Electric Actuators

PN16 - PN40 or drilled ANSI150RF (with DIN face to face dimentions)

The KD10 series is a top entry globe valve style body construction with a wide range of different single stage trims available. KD10 series combine the advanced modular design and the wide range of actuators to satisfy the needs of the industrial demand. Available in Carbon Steel (WCC) & Stainless Steel (CF8M). The KD10 valves are designed to control a broad variety of fluids, like steam, water, most of the medium and gases. One of the main features of this serie is the top guided construction that assure a stable plug travel over entire stroke of the valve minimizing vibration.

AM10 Mixing (ANSI150/ANSI300)



Features:

Sizes from **DN15 to DN200**

Valve Body: Carbon or Stainless Steel

Flanged ANSI 150/300

Suitable for either Pneumatic or Electric Actuators

PN16 - PN40 or drilled ANSI150RF (with DIN face to face dimentions)

The AM10 Series is a three-way ANSI standard style control valve for applications requiring mixing flow in a process control system. The open flow paths and simple construction provide a reliable and easy-to-maintain valve solution. The AM10 series could be manufactured with pneumatic or electric actuators to meet all specific requirements of fluid control (water, steam, thermal oil, gas and other liquids) whether compatible with the material used.

KEYSTONE KTM SCREWED BALL VALVES

KTM Ball Valve Series

High performance 3 Piece Ball Valves for use in Process Industries.

EB 598-3 Piece Ball Valve

- *Stainless Steel Body
- *Carbon PTFE Seat
- *1000 PSI (69 Bar)
- *Lockable Lever
- *Full Bore
- *-40 to 260c
- *Threaded or Socketweld



EB 598-3 Piece Ball Valve

- *Carbon Steel Body
- *Carbon PTFE Seat
- *1000 PSI (69 Bar)
- *Lockable Lever
- *Full Bore
- *-40 to 260c
- *Threaded or Socketweld

SIZE	CODE
8mm	SEB598-008
10mm	SEB598-010
15mm	SEB598-015
20mm	SEB598-020
25mm	SEB598-025
32mm	SEB598-032
40mm	SEB598-040
50mm	SEB598-050

SIZE	CODE
8mm	CEB598-008
10mm	CEB598-010
15mm	CEB598-015
20mm	CEB598-020
25mm	CEB598-025
32mm	CEB598-032
40mm	CEB598-040
50mm	CEB598-050

EB 588-3 Piece Ball Valve

- *Stainless Steel Body
- *Carbon PTFE Seat
- *1000 PSI (69 Bar)
- *-40 to 260c
- *Reduced Bore
- *Lockable Lever
- *Blow Out Proof Stem
- *Threaded or Socketweld



EB 588-3 Piece Ball Valve

- *Carbon Steel Body
- *Carbon PTFE Seat
- *1000 PSI (69 Bar)
- *-40 to 260c
- *Reduced Bore
- *Lockable Lever
- *Blow Out Proof Stem
- *Threaded or Socketweld

SIZE	CODE
8mm	SEB588-008
10mm	SEB588-010
15mm	SEB588-015
20mm	SEB588-020
25mm	SEB588-025
32mm	SEB588-032
40mm	SEB588-040
50mm	SEB588-050

SIZE	CODE
8mm	CEB588-008
10mm	CEB588-010
15mm	CEB588-015
20mm	CEB588-020
25mm	CEB588-025
32mm	CEB588-032
40mm	CEB588-040
50mm	CEB588-050

BURKERT ANGLE SEAT VALVES

2000 - Pneumatically operated 2/2 way angle seat valve CLASSIC

The externally piloted angle seat valve is operated with a single or double-acting piston actuator. The actuator is available in two different materials, depending on the ambient temperature. High flow rates are attained with the virtually straight flow path.



- *Long service life
- *High flow rate
- *Robust actuators with modular program
- *Stainless steel with sleeve or welded connection

Specifications

- *-10 to 185c *316L Stainless Body (Brass Available)
- *PTFE Sealing *15-50mm BSP
- *Working Pressure 232 PSI (16 Bar)
- *Max Control Pressure 145 PSI (10 Bar)

2060 - Pneumatically Operated 2/2-Way Angle Seat Valve with Stainless Actuator

The pneumatically operated angle seat valve with stainless steel actuators fulfils the demands of tough process environments. Unrivalled life time and sealing integrity is guaranteed by the trusted self-adjusting spindle sealing. The stainless actuator has been designed for tough applications. Laser welding ensures it is both cleanable and robust. With a ducted exhaust air port, the actuator can be operated isolated from the environment to guarantee an optimum life time.



- *Flow optimised stainless body with various connections
- *Stainless actuator suitable for demanding environments
- *Modular accessory program with stroke limitation and position feedback available
- *Stainless steel welded connection

Specifications

- *-10 to 185c *316L Stainless Body
- *PTFE Sealing *15-65mm Butt Weld
- *Working Pressure 232 PSI (16 Bar)
- *Max Control Pressure 145 PSI (10 Bar)

BURKERT ANGLE SEAT VALVES

2300 - Pneumatically Operated 2 Way Angle Seat Control Valve ELEMENT

The Type 2300 angle-seat valve fulfils tough criteria for process environments. Unrivalled cycle life and sealing integrity is guaranteed by the proven self adjusting packing gland. The parabolic trim results in a flow characteristic approximately 35% larger than conventional control valves. It is available in either stainless steel or with a durable PTFE seal for tight shut-off.



- *Excellent combination of good control and high flow rate
- *Control units can be mounted directly
- *Stainless housing with thread and weld end connection

Specifications

- *-10 to 185c
- *PTFE Sealing
- *Max Control Pressure 145 PSI (10 Bar)
- *Nominal Pressure PN25
- *316L Stainless Body
- *15-50mm BSP

2702 - Pneumatically Operated 2/2 Way Angle Seat Valve

The 2702 pilot valve consists of an 316L angle seat body with a rugged pneumatic piston actuator. The parabolic valve disc results in a flow capacity approximately 35% larger than conventional control valves. It is available in either stainless steel on stainless steel or with a durable PTFE seal for tight shut-off. Type 2702 can be actuated by the positioners Top-Control continuous type 8692/8693/8694 or SideControl Type 8635 or SideControl 8792/93 versions.



- *Excellent control accuracy and high flow capacity
- *Long service life
- *Stainless steel body with socket or weld connection

Specifications

- *-10 to 185c
- *PTFE Sealing
- *Working Pressure 232 PSI (16 Bar)
- *Max Control Pressure 101 PSI (7 Bar)
- *316L Stainless Body
- *15-50mm

BURKERT 3-WAY VALVES

Type 2006 - Pneumatically Operated 3/2-way Seat Valve CLASSIC

The Bürkert 3/2-way seat valve Type 2006 consists of a pneumatically operated CLASSIC actuator and a 3-way valve body. The actuator is available in two different materials, PA or PPS, depending on the ambient temperature. Interchanging of pressure and working connections enables different fluidic control functions, such as the mixing or distributing of media. The flow-optimised valve body Type 2006 allows excellent flow values. The tried-and-tested self-adjusting packing gland secures a high level of tightness and thus ensures reliable operation.



- *For mixing or distributing of media**
- *Controlled by a pilot valve or centrally by a valve island**
- *Long life time and maintenance-free operation**

Specifications

- *-10 to 185c
- *15-50mm
- *PTFE Sealing
- *Working Pressure 145 PSI (10 Bar)
- *316L Stainless Body
- *BSP Screwed

2106 - Pneumatically operated 3/2 Way Seat Valve ELEMENT for Central Automation

The Bürkert 3/2 way seat valve, Type 2106, consists of a pneumatically operated ELEMENT actuator and a 3 way stainless steel valve body. Interchanging of pressure and service ports enables different fluidic circuit functions, such as the mixing or distributing of mediums. The flow-optimized valve body of Type 2106 allows excellent flow rates. The tried and tested self-adjusting gland secures a high level of tightness and thus ensures reliable operation over years. The design of the 3/2 way valve, Type 2106, offers advantages of a modern, decentralized automation.



- *For mixing or distributing of media**
- *Decentralized automation with control head**
- *Control Head is connected w/o external tubing**

Specifications

- *-10 to 185c
- *15-80mm
- *PTFE Sealing
- *Working Pressure 145 PSI (10 Bar)
- *316L Stainless Body
- *BSP Screwed

BURKERT CONTROL HEADS & POSITIONERS

8690 Control Head for Angle Seat Valve



- *Optical Position Indicator
- *Includes Pilot Solenoid Valve & Mechanical or Inductive Switches
- *Internal Control Air Channel
- *Compact Design
- *Air Supply Filter

8691-Control Head for Decentralised Automation of ELEMENT Process Valves



- *Compact Stainless Steel Design
- *Integrated Analog Valve Position Registration (Teach Function)
- *Colored Illuminated Status Display
- *Fieldbus Interface AS-Interface/DeviceNet (Option)
- *Internal Control Air Channel

8692-Digital Electropneumatic Positioner for Process Control Valves



- *Compact Stainless Steel Design
- *Graphic Display with Backlight
- *Comprehensive Range of Additional Software Functions
- *Profibus DPV1 or DeviceNet (option)
- *Easy start up
- *Internal Control Air Channel

8693-Digital Electropneumatic Positioner for Process Control Valves



- *Compact Stainless Steel Design
- *Easy start-up by Tune function for position and process controller
- *Integrated control air routing with spring chamber aeration
- PROFIBUS DP-V1, DeviceNet, EtherNet/IP, PROFINET, Modbus TCP or bÜS (Bürkert System Bus)
- *Contact-free position sensor

Type 8694 - Digital Electropneumatic Positioner for Process Control Valves



- *Compact Stainless Steel Design
- *Integrated Valve Position Registration
- *Analog Feedback (Option)
- *Easy start up
- *Internal Control Air Channel
- *Binary Input

Type 8696 - Digital Electropneumatic Positioner for Process Control Valves



- *Compact, Robust Stainless Design
- *Start-up by Automatic Tune Function
- *Analog Feedback (Option)
- *Integrated Control Air Routing
- *Contact-Free Position Sensor

CARRARO PRESSURE VALVES & REGULATORS

UBAN Direct Operating Pressure Reducing Valve

The Uban series are spring loaded direct-operated, pressure reducing regulators. The main function is to regulate the outlet pressure. They are available in 1/2" to 2" (DN15 to DN50) body sizes and can be supplied with a range of different connections.

- *Carbon or Stainless Steel Body
- *-190 to 300c
- *4060 PSI / 280 Bar Max Inlet Pressure
- *Metal or Soft Seats
- *52 Bar Regulated Pressure Range
- *Flow to Open Design
- *PTFE, EPDM, FKM, Stainless Steel Diaphragms
- *BSP, ANSI or DN Flanged connections



SIZE	CODE
15mm	UBAN-015
20mm	UBAN-020
25mm	UBAN-025
32mm	UBAN-032
40mm	UBAN-040
50mm	UBAN-050

UBS Direct Operating Back Pressure Valve

The UBS series are spring loaded direct-operated, pressure relief valves used downstream of pressure regulators to protect the downstream system from over pressure. Their main function is to regulate the inlet pressure. They can be used also as backpressure regulators as they have good throttling characteristics. They are available in 1/2" to 2" (DN15 to DN50) body sizes.

- *Carbon or Stainless Steel Body
- *-190 to 300c
- *Metal or Soft Seats
- *Stainless Trim
- *52 Bar Regulated Inlet Pressure Range
- *Flow to Close Design
- *PTFE, EPDM, FKM, Stainless Steel Diaphragms
- *BSP, ANSI or DN Flanged connections



SIZE	CODE
15mm	UBS-015
20mm	UBS-020
25mm	UBS-025
32mm	UBS-032
40mm	UBS-040
50mm	UBS-050

GEMU ASEPTIC DIAPHRAGM VALVES

Type 601-Manual Operated

The GEMÜ 601 2/2-way diaphragm valve has a temperature-resistant plastic handwheel and is manually operated. A seal adjuster for increasing the service life of the diaphragm and an optical position indicator are integrated as standard.

Features

- *Body material forged 316L stainless steel
- *Stainless steel bonnet with sanitary internals
- *Second generation PTFE or EPDM diaphragm
- *Hermetic separation between medium and actuator
- *Optional flow direction and installation position
- *Long service life of the diaphragm due to patented seal adjuster
- *Valve body also available in multi-port designs (M-block and T-body)
- *10 Bar Working Pressure *Plastic Handwheel
- *4 to 15mm *-10 to 150c
- *Autoclavable *Visual position indicator



Type 612-Manual Operated

The GEMÜ 612 2/2-way diaphragm valve has a temperature-resistant plastic handwheel and is manually operated. A seal adjuster for increasing the service life of the diaphragm and an optical position indicator are integrated as standard.

Features

- *Body material forged 316L stainless steel
- *Stainless steel bonnet with sanitary internals
- *Second generation PTFE or EPDM diaphragm
- *Hermetic separation between medium and actuator
- *Optional flow direction and installation position
- *Long service life of the diaphragm due to patented seal adjuster
- *Valve body also available in multi-port designs (M-block and T-body)
- *10 Bar Working Pressure *Plastic Handwheel
- *10 to 20mm *-10 to 100c
- *Autoclavable *Visual position indicator



GEMU ASEPTIC DIAPHRAGM VALVES

Type 643-2/2 Way Manual Operated

Tank Bottom Valve with Side Mounted Gear Operator, can be Welded to Tank

The GEMÜ 643 2/2-way tank bottom valve has a manual side mounted gear operator with a plastic handwheel. An integral optical position indicator is standard. The stainless steel valve body is machined from a single block (monoblock, no welded components). The metal distance piece and the operator housing are made of stainless steel.

Features

- *Body material forged 316L stainless steel
- *Stainless steel bonnet with sanitary internals
- *Second generation PTFE or EPDM diaphragm
- *Operator rotatable 360°
- *The temperature resistant plastic handwheel allows for high operating temperatures

Features

- | | |
|--------------------------|----------------------------|
| *10 Bar Working Pressure | *Plastic Handwheel |
| *15 to 40mm | *-10 to 150c |
| *Autoclavable | *Visual position indicator |



Type 625-Pneumatic Operated

The GEMÜ 625 2/2-way diaphragm valve has a low maintenance plastic piston actuator and is pneumatically operated. The valve has a metal distance piece. An optical position indicator is integrated as standard. Normally Closed (NC), Normally Open (NO) and Double Acting (DA) control functions are available.

Features

- | | |
|--|----------------------------|
| *Body material forged 316L stainless steel | |
| *Stainless steel bonnet with sanitary internals | |
| *Second generation PTFE or EPDM diaphragm | |
| *Hermetic separation between medium and actuator | |
| *Optional flow direction and installation position | |
| *Suitable for sterile applications | |
| *6 Bar Working Pressure | *Plastic Actuator |
| *10 to 20mm | *-10 to 100c |
| *Autoclavable | *Visual position indicator |



GEMU ASEPTIC DIAPHRAGM VALVES

Type 650-Pneumatic Operated

The GEMÜ 650 2/2-way diaphragm valve has a stainless steel piston actuator and is pneumatically operated. The valve is designed for use in a sterile environment. All metallic actuator components are made of stainless steel. The compression springs of diaphragm sizes 80 and 100 are made of epoxy coated spring steel. Normally closed (NC), Normally open (NO) and Double acting (DA) control functions are available. An integral optical position indicator is standard.

Features

- *Body material forged 316L stainless steel
- *Stainless steel bonnet with sanitary internals
- *Second generation PTFE or EPDM diaphragm
- *Hermetic separation between medium and actuator
- *Optional flow direction and installation position
- *Suitable for inert, corrosive, liquid and gaseous media
- *10Bar Working Pressure *Stainless Actuator
- *10 to 100mm *-10 to 100c
- *Autoclavable *CIP/SIP capable



The GEMÜ 687 2/2-way diaphragm valve has a low maintenance plastic membrane actuator and is pneumatically operated. The valve has a metal distance piece. Normally Closed (NC), Normally Open (NO) and Double Acting (DA) control functions are available.

Features

- *Body material forged 316L stainless steel
- *Stainless steel bonnet with sanitary internals
- *Second generation PTFE or EPDM diaphragm
- *Hermetic separation between medium and actuator
- *Optional flow direction and installation position
- *10Bar Working Pressure *Stainless Actuator
- *10 to 100mm *-10 to 100c
- *Autoclavable *CIP/SIP capable



RIEGER ASEPTIC VALVES

RIEGER Aseptic valves meet all requirements regarding reliability and reliable operation. The reiger PTFE Bellows offer far greater hygienic solution, longer life span & cheaper running costs.

This valve are indispensable in aseptic valve clusters and aseptic filling machines, in which the highest value is placed to comprehensive product safety.

Main applications include

- *Pasteurized area of dairies
- *Cold aseptic filling (CAF)
- *Lactose/milk sugar
- *Yoghurt containing fruit
- *Instant coffee

Process Mixproof Valve N7

- *316L Stainless
- *145 PSI (10 Bar)
- *-10 to +121c
- *-10 to +135c (CIP)
- *PTFE Bellows

SIZE	CODE
25mm	RN7CV-025
40mm	RN7CV-040
50mm	RNC7V-050
65mm	RN7CV-065
80mm	RN7CV-080
100mm	RN7CV-100



Hybrid Mixproof Valve N13

- *316L Stainless
- *145 PSI (10 Bar)
- *-10 to +121c
- *-10 to +135c (CIP)
- *PTFE Bellows

SIZE	CODE
25mm	RN7CV-025
40mm	RN7CV-040
50mm	RNC7V-050
65mm	RN7CV-065
80mm	RN7CV-080
100mm	RN7CV-100



Single Seat Valve

- *316L Stainless
- *145 PSI (10 Bar)
- *-10 to +121c
- *-10 to +135c (CIP)
- *PTFE Bellows

SIZE	CODE
25mm	RASSV-025
40mm	RASSV-040
50mm	RASSV-050
65mm	RASSV-065
80mm	RASSV-080
100mm	RASSV-100



Overflow Valve E8

- *316L Stainless
- *145 PSI (10 Bar)
- *-10 to +121c
- *-10 to +135c (CIP)
- *PTFE Bellows

SIZE	CODE
25mm	RE8OV-025
40mm	RE8OV-040
50mm	RE8OV-050
65mm	RE8OV-065
80mm	RE8OV-080
100mm	RE8OV-100



RIEGER ASEPTIC VALVES

Control Modulating Valve

- *316L Stainless
- *145 PSI (10 Bar)
- *-10 to +121c
- *-10 to +135c (CIP)
- *PTFE Bellows

SIZE	CODE
25mm	RACMV-025
40mm	RACMV-040
50mm	RACMV-050
65mm	RACMV-065
80mm	RACMV-080
100mm	RACMV-100



Filling Valve

- *316L Stainless
- *145 PSI (10 Bar)
- *-10 to +121c
- *-10 to +135c (CIP)
- *PTFE Bellows

SIZE	CODE
25mm	RAFV-025
40mm	RAFV-040
50mm	RAFV-050
65mm	RAFV-065
80mm	RAFV-080
100mm	RAFV-100



Biocheck Sampling Valve B1

- *316L Stainless Body
- *145 PSI (10 Bar) Operating Pressure
- *87 PSI (8 Bar) Air Pressure
- *-10 to +121c (PTFE)
- *-10 to +130c (EPDM)
- *-10 to +135c (CIP)
- *EPDM Seal
- *PTFE Bellows
- *Buttweld or Clamp



Biocheck Sampling Valve B2

- *316L Stainless Body
- *145 PSI (10 Bar) Operating Pressure
- *87 PSI (8 Bar) Air Pressure
- *-10 to +121c (PTFE)
- *-10 to +130c (EPDM)
- *-10 to +135c (CIP)
- *EPDM Seal
- *PTFE Bellows
- *Buttweld or Clamp



Safety Valve Valve

- *316L Stainless
- *87 PSI (6 Bar)
- *-10 to +130c
- *-10 to +150c (CIP)
- *EPDM Seal

SIZE	CODE
25mm	RSAV-025
40mm	RSAV-040
50mm	RSAV-050
65mm	RSAV-065
80mm	RSAV-080
100mm	RSAV-100



INOXPA INNOVA SANITARY VALVES

Butterfly Valve

Inoxpa butterfly valves, whether manually or automatically actuated, can be used in most liquid product applications in the food-processing, & pharmaceutical industries.

Features

- *Stainless steel 316 body
- *Disc and body halves: AISI 316L (forged)
- *High grade seat material options
- *One-piece disc and stem assembly
- *-10 to +100c (Operating Temp)
- *145 PSI (10 Bar) Operating Pressure
- *Manual or Pneumatic operation
- *Control top option
- *Sizes 25-100mm
- *-10 to +140c (CIP)
- *87 Bar (8 Bar) Air Pressure



LBV- Double Butterfly Valve

The LBV (Leakage Butterfly Valve) valve offers an easy and safe separation of products and prevents accidental mixing in case of gasket failure. The most usual applications are the ones that require safe separation of the product and CIP solutions.

Features

- *Stainless steel 316 body
- *Disc and body halves: AISI 316L (forged)
- *Interchangeable half-bodies (any connection type).
- *High grade seat material options
- *-10 to +100c (Operating Temp)
- *145 PSI (10 Bar) Operating Pressure
- *Sizes 25-100mm
- *Control top option
- *-10 to +140c (CIP)
- *87 Bar (8 Bar) Air Pressure



6400- Ball Valve

Sanitary ball valves, whether manually or automatically actuated, are used mainly with viscous fluids containing solid particles, and, generally, in applications requiring an unobstructed flow.

Features

- *Stainless steel 316 body
- *Precision 316 S/S ball and stem as standard
- *Full bore
- *High grade seat material options
- *Optional CIP Ports
- *Horizontal or vertical actuator
- *-10 to +120c (Operating Temp)
- *145 PSI (10 Bar) Operating Pressure
- *Sizes 25-100mm
- *-10 to +140c (CIP)
- *87 Bar (8 Bar) Air Pressure



INOXPA INNOVA SANITARY VALVES

Innova D-Double Seal Mixproof Valve

Innova D-type valve is a pneumatic shut-off single seat valve with two seals that, by means of a leakage chamber under atmospheric pressure formed between the two seals, enables a safe separation of two different products, one of which is usually CIP (cleaning medium).

Features

- *Stainless steel 316 body
- *Specific profile seat seals, conical upper seal, radial lower seal
- *360° adjustable body
- *Open lantern allows visual inspection of shaft sealing
- *Main valve with single acting actuator (NC) and normally open
- *-10 to +121c (Operating Temp) *-10 to +140c (CIP)
- *145 PSI (10 Bar) Operating Pressure *87 Bar (8 Bar) Air Pressure
- *Sizes 25-100mm



Innova Type F- Tank Bottom Valve

The INNOVA F valve is a shut-off single seat valve designed specifically for installation at the tank bottom for use in hygienic applications.

Features

- *Stainless steel 316 body
- *Heavy duty cast body clamps (bolted type)
- *Radial type seal design *Single-acting actuator
- *45° elbow outlet to enable welding *Normally closed valve
- *Open lantern allows visual inspection of shaft sealing
- *-10 to +121c (Operating Temp) *-10 to +140c (CIP)
- *145 PSI (10 Bar) Operating Pressure *87 Bar (8 Bar) Air Pressure
- *Sizes 25-100mm



Innova Type G- Control Single Seat Valves

The INNOVA G-type valve is a pneumatic flow control single seat valve for hygienic applications. Its main function involves regulating flow, controlling pressure and level.

Features

- *Stainless steel 316 body
- *Normally closed (NC) valve without seal in the plug
- *360° adjustable body
- *Open lantern allows visual inspection of shaft sealing
- *Dual function positioner: position controller (PD) or process controller (PID)
- *-10 to +121c (Operating Temp) *-10 to +140c (CIP)
- *145 PSI (10 Bar) Operating Pressure *87 Bar (8 Bar) Air Pressure
- *Sizes 25-100mm



INOXPA INNOVA SANITARY VALVES

Innova J- Overflow Single Seat Valve

The INNOVA type J valve is a pneumatic single seat valve designed for use as overflow valve in hygienic installations. Its most important applications involve operating as a by-pass valve for positive displacement pumps or protecting equipment against excessive pressure.

Features

- *Stainless steel 316 body
- *Pressure range: from 0,5 to 6 bar
- *Opening pressure range: from 6 to 10 bar
- *Open lantern allows visual inspection of shaft sealing
- *-10 to +121c (Operating Temp)
- *145 PSI (10 Bar) Operating Pressure
- *Sizes 25-100mm
- *360° adjustable body
- *-10 to +140c (CIP)
- *87 Bar (8 Bar) Air Pressure



Innova K-Divert Single Seat Valve

The INNOVA K-type valve is a pneumatic divert seat valve designed for hygienic applications. exiting and entering tanks or vessels.

Features

- *Stainless steel 316 body
- *360° adjustable body
- *Open lantern allows visual inspection of shaft sealing
- *Single-acting pneumatic actuator
- *-10 to +121c (Operating Temp)
- *145 PSI (10 Bar) Operating Pressure
- *Sizes 25-100mm
- *360° adjustable body
- *-10 to +140c (CIP)
- *87 Bar (8 Bar) Air Pressure



Innova M-Shut-Off Single Seat Valve

The INNOVA M-type valve is a pneumatic shut-off seat valve for hygienic applications. The valve is designed for the direction of product flow from the upper to the lower body. To avoid the effect of water hammer, the valve closes against the flow.

Features

- *Stainless steel 316 body
- *360° adjustable body
- *Open lantern allows visual inspection of shaft sealing
- *Single-acting pneumatic actuator
- *-10 to +121c (Operating Temp)
- *145 PSI (10 Bar) Operating Pressure
- *Sizes 25-100mm
- *360° adjustable body
- *-10 to +140c (CIP)
- *87 Bar (8 Bar) Air Pressure



INOXPA INNOVA SANITARY VALVES

Innova N-Shut-Off Single Seat Valve

The INNOVA N-Type valve is a pneumatic shut-off seat valve for hygienic applications.

Features

- *Stainless steel 316 body
- *Single-acting pneumatic actuator
- *360° adjustable body
- *Open lantern allows visual inspection of shaft sealing
- *Valve can be changed to normally open (NO) by reversing the position of the pneumatic actuator
- *-10 to +121c (Operating Temp)
- *-10 to +140c (CIP)
- *145 PSI (10 Bar) Operating Pressure
- *87 Bar (8 Bar) Air Pressure
- *Sizes 25-100mm



Innova P- Shut-off Double Seat Mixproof Valve

The INNOVA P-type mixproof valve is a pneumatic shut-off double seat valve for hygienic applications. The leakage chamber, under atmospheric pressure, situated between the two seats ensures a safe interface between the two liquids, one of which is usually a CIP solution. The leakage chamber can be cleaned by independent lifting of the seats during the CIP cleaning of the line.

Features

- *Stainless steel 316 body
- *360° adjustable body
- *Balanced lower seat.
- *Open lantern allows visual inspection of shaft sealing
- *Single-acting pneumatic actuator
- *No leakage during the opening/closing of the valve
- *-10 to +121c (Operating Temp)
- *-10 to +140c (CIP)
- *145 PSI (10 Bar) Operating Pressure
- *87 Bar (8 Bar) Air Pressure
- *Sizes 25-100mm



Control Top



Control Top with ASI



Actuator



*Double acting or spring return models available

INOXPA SANITARY MANUAL VALVES

Tri Clover Non Return Valve

- *316 Stainless
- *Viton/ EPDM Seal
- *145 PSI (10 Bar)
- *-20 to 120c



SIZE	CODE
25mm	ICNRV-025
40mm	ICNRV-040
50mm	ICNRV-050
65mm	ICNRV-065
80mm	ICNRV-080
100mm	ICNRV-100

Weld Non Return Valve

- *316 Stainless
- *Viton/ EPDM Seal
- *145 PSI (10 Bar)
- *-20 to 120c



SIZE	CODE
25mm	IWNRV-025
40mm	IWNRV-040
50mm	IWNRV-050
65mm	IWNRV-065
80mm	IWNRV-080
100mm	IWNRV-100

Overflow Valve

- *316 Stainless
- *145 PSI (10 Bar)
- *-20 to 120c
- *Viton/ EPDM Seal



SIZE	CODE
25mm	ISOV-025
40mm	ISOV-040
50mm	ISOV-050
65mm	ISOV-065
80mm	ISOV-080

VeeValv-Weld End

- *316 Stainless Body
- *145 PSI (10 Bar)
- *-20 to +90c
- *EPDM Diaphragm
- *Manual Operation
- *Weld Ends



SIZE	CODE
20mm	VVMW-025
25mm	VVMW-040
40mm	VVMW-040
50mm	VVMW-050

Ball Valve

- *316 Stainless
- *145 PSI (10 Bar)
- *-20 to 120c
- *Viton/ EPDM Seal



SIZE	CODE
25mm	IBAV-025
40mm	IBAV-040
50mm	IBAV-050
65mm	IBAV-065
80mm	IBAV-080
100mm	IBAV-100

Butterfly Valve

- *316 Stainless
- *145 PSI (10 Bar)
- *-20 to 120c
- *Viton/ EPDM Seal



SIZE	CODE
25mm	IWBV-025
40mm	IWBV-040
50mm	IWBV-050
65mm	IWBV-065
80mm	IWBV-080
100mm	IWBV-100

KEYSTONE HYGIENIC VALVE SPARES

F 250 Disc Stem

SIZE	CODE
25mm	F250S-025
40mm	F250S-040
50mm	F250S-050
65mm	F250S-065
80mm	F250S-080
100mm	F250S-100



F 250 Manual Butterfly Valve Handle



Butterfly Valve Seals

Silicone Seal KBVS-S



EPDM Seal KBVS-E



Viton Seal KBVS-V



Control Tops

Control Tops EasyMind 2.0 F783E2.0 are Automated Valve Interface Devices with integrated sensors and solenoid valve with a single connection to the PLC system. They can be used for DIGITAL (hard-wired) and BUS control interfaces.



- *Single 5/2 solenoid valve (as standard)
- *Bi-directional speed controls
- *Lockable manual override
- *Robust IP 65/67 enclosure
- *24 V DC/AC, 110 V AC, or BUS specific voltages

F 257- Actuator

Vertical quarter turn Pentair Pneumatic Actuators F257 are used to drive butterfly, ball and shutter type valves. The pneumatic actuators are commonly used in all segments of hygienic applications.



- *Fast and reliable quarter turn operation makes it suitable for use with butterfly, ball and plug valves
- *Constructed from corrosion resistant materials
- *Designed with an optimized piston helix to provide maximum torque output
- *Double acting or spring return models available

TRELLEBORG FOOD GRADE HOSE

Premium FDA Rubber Hose

Alikler-Fatty Food Suction Hose (TFS1)



- ***Temperature:** -30 to +100c
- ***Tube:** White oil resistant NBR
- ***Cover:** Oil & weather resistant NBR
- ***Reinforcement:** Synthetic textile with steel wire helix
- ***Applications:** Lightweight beverage & fatty food suction hose for use with fatty foods such as chocolate, yoghurt, creams & olive oil.

Hose ID	WP	Weight
25mm	10 Bar	0.92kg
32mm	10 Bar	1.1kg
38mm	10 Bar	1.26kg
51mm	10 Bar	1.77kg
63mm	10 Bar	2.24kg
76mm	10 Bar	3.29kg

Alikler D-High Pressure Food Suction Hose (TFS2)



- ***Temperature:** -30 to +100c
- ***Tube:** White Oil Resistant NBR
- ***Cover:** Oil & weather resistant NBR
- ***Reinforcement:** Synthetic textile with PET helix
- ***Applications:** High pressure flexible food & beverage suction hose for use with juices, beer, wine & in most beverage suction requirements as well as fatty & non fatty foods.

Hose ID	WP	Weight
51mm	15 Bar	1.97kg
63mm	15 Bar	2.38kg
76mm	15 Bar	2.85kg
102mm	15 Bar	3.85kg

Lactadial Crush Resistant Food Suction Hose (TFS3)



- ***Temperature:** -30 to +80c
- ***Tube:** White NR
- ***Cover:** Weather resistant NR
- ***Reinforcement:** Synthetic textile with PET helix
- ***Applications:** Specially designed for use on milk trucks & milk tanker bays also good for use in dairy applications except with fatty & oily foods.

Hose ID	WP	Weight
38mm	6 Bar	0.97kg
51mm	6 Bar	1.34kg
63mm	6 Bar	1.72kg
76mm	6 Bar	2.24kg

TRELLEBORG FOOD GRADE HOSE

Premium FDA Rubber Hose

Citerdial-Lightweight Milk Suction Hose (TFS4)



- ***Temperature:** -30 to +80c
- ***Tube:** White NR
- ***Cover:** Weather resistant NBR
- ***Reinforcement:** Synthetic textile with embedded steel wire helix
- ***Applications:** Lightweight flexible suction hose for use with milk tanker unloading bays & milk tanker trucks. Also good for use in low pressure food applications.

Hose ID	WP	Weight
25mm	6 Bar	0.7kg
38mm	6 Bar	1.14kg
51mm	6 Bar	1.79kg
63mm	6 Bar	2.17kg
76mm	6 Bar	3.03kg
102mm	6 Bar	3.67kg

Trellvin-Crush Resistant Beverage Suction Hose (TFS5)



- ***Temperature:** -30 to +100c
- ***Tube:** White EPDM
- ***Cover:** Weather resistant EPDM
- ***Reinforcement:** Synthetic textile with PET helix
- ***Applications:** Lightweight flexible beverage suction hose for use with juices, beer, wine & in most beverage suction requirements.

Hose ID	WP	Weight
38mm	10 Bar	1.18kg
51mm	10 Bar	1.48kg
63mm	10 Bar	2.10kg
76mm	10 Bar	2.46kg

Millesime-High Temp Food Suction Hose (TFS6)



- ***Temperature:** -30 to +100c
- ***Tube:** White EPDM
- ***Cover:** Weather resistant EPDM
- ***Reinforcement:** Synthetic textile with embedded steel wire helix
- ***Applications:** Lightweight flexible suction hose for use with the transfer of milk, food, beer & any non fatty foods.

Hose ID	WP	Weight
51mm	10 Bar	1.66kg
63mm	10 Bar	2.00kg
76mm	10 Bar	2.95kg
102mm	10 Bar	3.80kg
152mm	10 Bar	8.80kg

TRELLEBORG FOOD GRADE HOSE

Premium FDA Rubber Hose

Alcodial-High Temp Beverage Suction Hose (TFS7)



Hose ID	WP	Weight
25mm	10 Bar	0.8kg
38mm	10 Bar	1.12kg
51mm	10 Bar	1.43kg
63mm	10 Bar	2.08kg
76mm	10 Bar	2.86kg

***Temperature:** -30 to +80c

***Tube:** White UPE

***Cover:** Weather resistant NR

***Reinforcement:** Synthetic textile with embedded steel wire helix

***Applications:** Lightweight flexible suction hose for use with the transfer of any type of beverage but is particularly effective with alcohol due to 99% alcohol resistant tube.

Trellvac-Abrasive Food Suction Hose (TFS8)



Hose ID	WP	Weight
51mm	5 Bar	1.43kg
63mm	5 Bar	1.76kg
76mm	5 Bar	2.10kg
102mm	5 Bar	2.82kg
150mm	5 Bar	4.69kg

***Temperature:** -10 to +80c

***Tube:** White abrasion resistant NBR

***Cover:** Weather resistant NBR

***Reinforcement:** Synthetic textile with embedded steel helix

***Applications:** Extraction and transport hose for bulk abrasive products for the food industry (sugar, grains, flour, milk powder, cattle feed, etc.) and chemicals (PVC, dry stuffs, etc.).

***Can be used in ATEX areas: 0, 1, 2 and 20, 21, 22.**

***Non-marking, abrasion resistant cover**

Pharmakler FEP-High Temp Food Suction Hose (TFS9)



Hose ID	WP	Weight
19mm	10 Bar	0.73kg
25mm	10 Bar	0.89kg
32mm	10 Bar	1.15kg
38mm	10 Bar	1.38kg
51mm	10 Bar	2.20kg

***Temperature:** -40 to +150c

***Tube:** White FEP (Fluorinated Ethylene Propylene),

***Cover:** Weather resistant EPDM

***Reinforcement:** Synthetic textile with embedded steel helix

***Applications:** High purity applications in the food, biotech & pharma industry, also used for high temperature applications.

TRELLEBORG FOOD GRADE HOSE

Premium FDA Rubber Hose

Multidial-High Temp Abrasive Food Suction Hose (TFS10)



Hose ID	WP	Weight
25mm	10 Bar	0.8kg
38mm	10 Bar	1.26kg
51mm	10 Bar	1.70kg
63mm	10 Bar	2.39kg
76mm	10 Bar	3.26kg

***Temperature:**-30 to +100c

***Tube:**White UPE

***Cover:**Weather resistant EPDMNR

***Reinforcement:**Synthetic textile with embedded steel wire helix

***Applications:**Suitable for suction or discharge of any aqueous, acidic and oily foodstuffs such as milk, juices, wine, beer, brandies and spirits, vegetable oils. Can also be used in applications that require steam cleaning up to + 130 c temperatures.Odourless & tasteless inner tube.

Supervac-Abrasive Food Delivery Hose (TFD1)



Hose ID	WP	Weight
90mm	7 Bar	2.07kg
102mm	7 Bar	3.75kg

***Temperature:**-10 to +80c

***Tube:**White abrasion resistant NBR

***Cover:**Weather resistant NBR

***Reinforcement:**Synthetic textile

***Applications:**Lightweight flexible delivery hose for use with abrasive foods such as milk powder, sugar, grains & any food grade powder.

Alikler D-High Pressure Food Suction Hose (TFD2)



Hose ID	WP	Weight
32mm	15 Bar	1.00kg
38mm	15 Bar	1.20kg

***Temperature:**-30 to +100c

***Tube:**White Oil Resistant NBR

***Cover:**Oil & weather resistant NBR

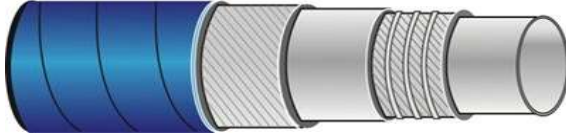
***Reinforcement:**Synthetic textile with PET helix

***Applications:**High pressure flexible food & beverage delivery hose for use with juices,beer,wine & in most beverage suction requirements as well as fatty & non fatty foods.

ALFAGOMMA FOOD GRADE HOSE

Quality FDA Rubber Hose

Rubber Fatty Food Suction Hose (REFS)



***Temperature:** -30 to +100c

***Tube:** White NBR

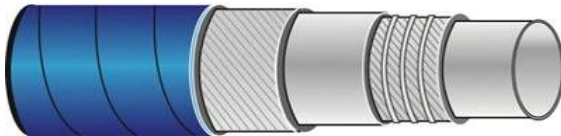
***Cover:** Oil & weather resistant NBR

***Reinforcement:** Synthetic textile with steel wire helix

***Applications:** Good for use in almost all food suction hose requirements including with the use of fatty & oily foods.

Hose ID	WP	Weight
19mm	10 Bar	0.74kg
25mm	10 Bar	0.92kg
38mm	10 Bar	1.08kg
38mm	10 Bar	1.27kg
51mm	10 Bar	1.64kg
63mm	10 Bar	2.15kg
76mm	10 Bar	2.58kg
102mm	10 Bar	3.58kg

Rubber Crush Resistant Food Suction Hose (RCBS)



***Temperature:** -30 to +80c

***Tube:** White NBR

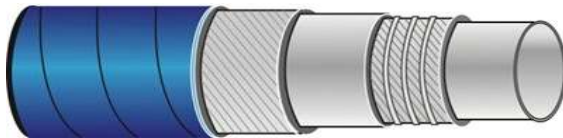
***Cover:** Oil & weather resistant NBR

***Reinforcement:** Synthetic textile with steel wire helix

***Applications:** Lightweight flexible beverage suction hose for use with juices, beer, wine & in most beverage & fatty food hose suction requirements.

Hose ID	WP	Weight
25mm	10 Bar	1.08kg
38mm	10 Bar	1.27kg
51mm	10 Bar	1.64kg
63mm	10 Bar	2.15kg
76mm	10 Bar	2.58kg

Rubber Lightweight Milk & Dairy Suction Hose (RMTH)



***Temperature:** -30 to +80c

***Tube:** White NBR

***Cover:** Oil & weather resistant NBR

***Reinforcement:** Synthetic textile with steel wire helix

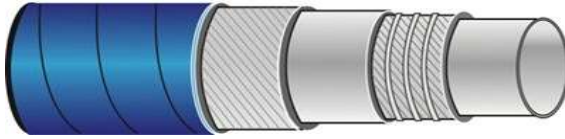
***Applications:** Lightweight flexible suction hose for use with milk tanker unloading bays & milk tanker trucks. Also good for use in food applications that require a light weight & flexible hose.

Hose ID	WP	Weight
51mm	10 Bar	1.22kg
63mm	10 Bar	1.83kg
76mm	10 Bar	2.42kg

ALFAGOMMA FOOD GRADE HOSE

Quality FDA Rubber Hose

High Temp Chemical & Food Suction Hose (ARCS1)



***Temperature:** -30 to +100c

***Tube:** White/Blue UHMWPE

***Cover:** Oil & weather resistant EPDM

***Reinforcement:** Synthetic textile with steel wire helix

***Applications:** Good for use in almost all food suction hose requirements including with the use of chemicals & non diluted caustics. Suitable for 98% of chemicals on the market.

Hose ID	WP	Weight
25mm	16 Bar	0.69kg
38mm	16 Bar	0.98kg
51mm	16 Bar	1.27kg
63mm	16 Bar	2.02kg
76mm	16 Bar	2.40kg
102mm	16 Bar	3.38kg

Saturated & Superheated Steam Hose (ASS)



***Temperature:** -40 to +210c

***Tube:** Black Conductive EPDM

***Cover:** Red heat, weather & abrasion resistant EPDM

***Reinforcement:** High tensile steel wire braids

***Applications:** Saturated & superheated steam applications.

Hose ID	WP	Coil Size
13mm	18 Bar	20,61M
19mm	18 Bar	20,61M
25mm	18 Bar	20,61M
32mm	18 Bar	20,61M
38mm	18 Bar	20,61M

Saturated Steam & Washdown Hose (AFS1)



***Temperature:** -40 to +165c

***Tube:** White Food Grade EPDM

***Cover:** Blue oil & weather resistant EPDM

***Reinforcement:** High tensile textile cords

***Applications:** Saturated & superheated steam applications.

***Working Pressure drops from 20 to 6 bar once temperature hits over 100c**

*Available in Blue or White

Hose ID	WP	Coil Size
13mm	20 Bar	20,30M
19mm	20 Bar	20,30M
25mm	20 Bar	20,30M

FOODGRADE PTFE HOSE

Convoflex SS

Heavy wall extruded Convuluted hose with SS Braid used extensively through the process industry due to the self cleaning nature of the design of the hose through to the unique way the hose can be Lined through the fittings to make a completely bug free environment for applications where cleanliness is paramount. This also protects the fittings against corrosion in applications transferring aggressive media.



Temp Rating: -70 to +260c

Sizes: 3/8" to 6"

Inner Layer: Helically convoluted PTFE tube

Outer Layer: SS 304 Braid

High Flexibility

Smoothbore SS

The classic PTFE hose. Ideal problem solver for applications involving aggressive chemicals and/or extremes of temperature and movement. Designed for use with PTFE hose tail fittings. The Smoothbore PTFE liner means the hose can pass very stringent cleanliness specifications laid down in Automotive, Chemical and Food industries.



Temp Rating: -70 to +260c

Sizes: 1/4" to 1"

Inner Layer: Helically convoluted PTFE tube

Outer Layer: SS 304 Braid with EPDM Rubber

High Flexibility

Easyflex SS

Designed for easy Hose assembly by anyone looking to extend their product portfolio. Easyflex has a true ID and eliminates the need for deconvoluting of the hose when using standard Hydraulic tail fittings. Used in applications where constant flexing, high temperature & /or chemical resistance is paramount. Easyflex offers a cost effective solution over the full life of the hose.



Temp Rating: -70 to +260c

Sizes: 1/4" to 2"

Inner Layer: Helically convoluted PTFE tube

Outer Layer: SS 304 Braid with EPDM Rubber

High Flexibility

STAINLESS STEEL HOSE

Stainless Steel Single Braided (SSH-1)



***Size Range:**6-200mm
***Temperature:**-270 to +700c

***Applications:**Steam, Chemical & Solvents
***Single Braided Hose**

Stainless Steel Double Braided (SSH-2)



***Size Range:**6-200mm
***Temperature:**-270 to +700c

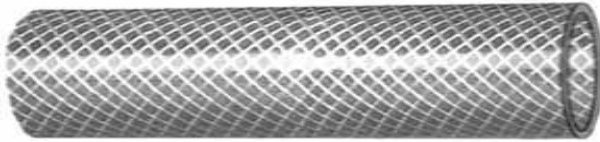
***Applications:**Steam, Chemical & Solvents
***Double Braided Hose**

As all our stainless hoses are custom made we make all hoses to each customers individual requirements & or needs. End options such as Camlocks, Flanged & BSP Female & Male ends as well as Elbows.



SAINT GOBAIN SILICONE HOSE

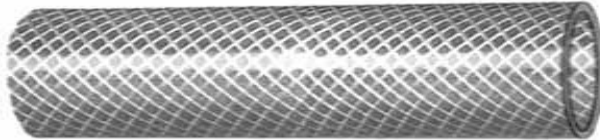
Puregard-SPD



- ***Temperature:** -62 to +200c
- ***Inner Tube:** Platinum-Cured FDA Silicone
- ***Cover:** FDA Silicone reinforced with single ply polyester braid
- *Suitable for CIP & Steam
- *Totally Sterilizable
- *Odourless

Hose ID	WP	Coil Size
8mm	10 Bar	20,30M
10mm	8 Bar	20,30M
13mm	6 Bar	20,30M
19mm	5 Bar	20,30M
25mm	4 Bar	20,30M

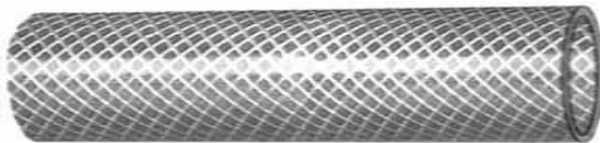
Puregard-FPD



- ***Temperature:** -62 to +200c
- ***Inner Tube:** Platinum-Cured FDA Silicone
- ***Cover:** FDA Silicone reinforced with four ply polyester braid
- *Suitable for CIP & Steam
- *Totally Sterilizable
- *Odourless

Hose ID	WP	Coil Size
13mm	10 Bar	20,30M
19mm	8 Bar	20,30M
25mm	7 Bar	20,30M
38mm	6 Bar	20,30M
50mm	5 Bar	20,30M
63mm	4 Bar	20,30M
76mm	3 Bar	20,30M
102mm	3 Bar	20,30M

Puregard-FPW



- ***Temperature:** -62 to +200c
- ***Inner Tube:** Platinum-Cured FDA Silicone
- ***Cover:** FDA Silicone reinforced with four ply polyester braid with stainless helix wire
- *Suitable for CIP & Steam
- *Totally Sterilizable
- *Odourless

Hose ID	WP	Coil Size
13mm	14 Bar	20,30M
19mm	14 Bar	20,30M
25mm	14 Bar	20,30M
38mm	14 Bar	20,30M
50mm	12 Bar	20,30M
63mm	12 Bar	20,30M

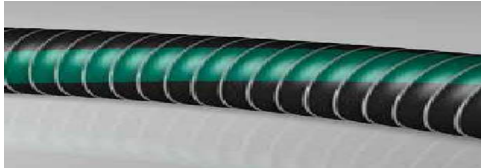
COMPOSITE HOSE

Code 901

***Internal wire** – PP coated Galvanised steel

***External wire** – Galvanised steel

***Temperature Range** / – 30°C to +100°C



Hose ID	WP
25mm	14 Bar
32mm	14 Bar
38mm	14 Bar
51mm	12 Bar
63mm	10 Bar
76mm	12 Bar
102mm	10 Bar

A tough, high strength oil and petroleum transfer hose. Applications such as rail car loading and unloading, road tanker bottom loading, lubricating oil plant hose exchanges. The hose is lined and reinforced with polypropylene fabrics and sealed with polypropylene films. The cover is a wear and weatherproof layer of PVC coated polyester.

Code 951

***Internal wire** – PP coated Galvanised steel

***External wire** – Galvanised steel

***Temperature Range** / – 30°C to +100°C



Hose ID	WP
25mm	14 Bar
32mm	14 Bar
38mm	14 Bar
51mm	12 Bar
63mm	10 Bar
76mm	12 Bar
102mm	10 Bar

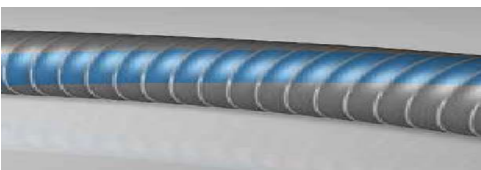
Manufactured from multiple layers of polypropylene fabrics and films. Some typical applications are in plant transfer of liquid chemicals, vegetable and mineral oils and loading and unloading of these products to and from road tankers, rail tankers and marine tanker ships.

Code 952

***Internal wire** – PP coated Galvanised steel

***External wire** – Stainless steel

***Temperature Range** / – 30°C to +100°C



Hose ID	WP
25mm	14 Bar
32mm	14 Bar
38mm	14 Bar
51mm	12 Bar
63mm	10 Bar
76mm	12 Bar
102mm	10 Bar

This hose is identical in its construction to CODE 951 with the exception of having an outer wire of stainless steel 316. Like CODE 951, CODE 952 is typically used in applications involving plant transfer of liquid chemicals, vegetable and mineral oils and loading and unloading of these products to and from, road tankers, rail tankers and marine tanker ships.

COMPOSITE HOSE

Code 969

- *Internal wire – Stainless steel
- *External wire – Galvanized steel
- *Temperature Range / – 30°C to +100°C

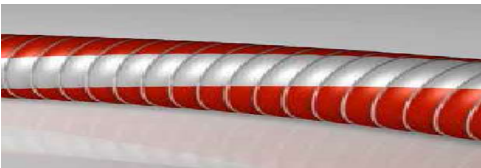


Hose ID	WP
25mm	14 Bar
32mm	14 Bar
38mm	14 Bar
51mm	12 Bar
63mm	10 Bar
76mm	12 Bar
102mm	10 Bar

Manufactured from multiple layers of polypropylene fabrics and films. The inner wire helix is stainless steel 316. The outer wire helix is galvanised steel. Again, CODE 969 is typically used in applications involving plant transfer of liquid chemicals, vegetable and mineral oils and loading and unloading of these products to and from, road tankers, rail tankers and marine tanker ships.

CHEMFLOW TYPE 1 (PTFE Inner)

- *Internal wire – Stainless steel
- *External wire – Stainless steel
- *Temperature Range / – 30°C to +100°C



Hose ID	WP
25mm	14 Bar
38mm	14 Bar
51mm	12 Bar
63mm	10 Bar
76mm	10 Bar
102mm	10 Bar

Heavy Duty construction for aggressive chemicals Suction & Delivery. Used for Ship to Shore and Ship to Ship, also used for use with aggressive chemicals, Food grade applications, Dockside and in general for the most arduous Industrial and Marine applications.

PVC HOSE

Clear Multi Purpose Hose (CMPH)



***Temperature:** -10 to +60c

***FDA Compliant**

***Applications:** A non toxic multipurpose hose for the transfer of Air, Food, Water and Petroleum based products.

Hose ID	WP	Coil Size
6mm	17 Bar	20,100M
8mm	17 Bar	20,100M
10mm	17 Bar	20,100M
12.5mm	17 Bar	20,100M
16mm	17 Bar	20,100M
20mm	17 Bar	20M
25mm	17 Bar	20M
32mm	10 Bar	20M
38mm	10 Bar	20M
50mm	10 Bar	20M

Clear Vinyl Tube (CVT)



***Temperature:** -10 to +50c

***FDA Compliant**

***Applications:** Low Pressure Food & Beverage Transfer hose that can also be used with some chemicals.

Hose ID	WP	Coil Size
6mm	6 Bar	30M
8mm	5 Bar	30M
10mm	4 Bar	30M
12.5mm	4 Bar	30M
16mm	4 Bar	30M
19mm	3 Bar	30M
25mm	3 Bar	30M
32mm	2 Bar	30M
38mm	2 Bar	30M
50mm	2 Bar	30M

Cold Wash Hose (CWH)



***Temperature:** -15 to +60c

***Applications:** Low Pressure Cold Washdown

Hose ID	WP	Coil Size
12mm	10 Bar	20M
19mm	10 Bar	20M
25mm	10 Bar	20M
32mm	10 Bar	20M

PVC HOSE

Milk Master-Milk Suction Hose (PMS)



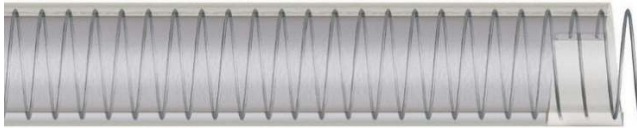
***Temperature:** -5 to +60c

***FDA Compliant**

***Applications:** Universal Food suction hose, good for use with flours, light grains, dairy products & milk. Widely used as milk transfer hose on milk tankers.

Hose ID	WP	Coil Size
20mm	7 Bar	20M
25mm	6 Bar	20M
32mm	4 Bar	20M
38mm	4 Bar	20M
50mm	4 Bar	20M
63mm	4 Bar	20M
76mm	3 Bar	20M

Plutone-Liquid Suction Hose (CLS)



***Temperature:** -5 to +65c

***FDA Compliant**

***Applications:** Low pressure food Suction & delivery of fruit juices, liquid food & up to 20% straight alcohol. Ideal for use on filling machines.

***Non Conductive, Non Toxic & Phthalates free.**

Hose ID	WP	Coil Size
16mm	6 Bar	30M
19mm	5 Bar	30M
25mm	5 Bar	30M
32mm	4 Bar	30M
38mm	4 Bar	30M
50mm	3 Bar	30M
63mm	2.5 Bar	30M
76mm	2 Bar	30M
102mm	2 Bar	30M
152mm	2 Bar	30M

Redline-Wine/Food Suction Hose (CRS)



***Temperature:** -10 to +60c

***FDA Compliant**

***Applications:** Ideal hose for use with suction & delivery of alcohol based products up to 50%, also commonly used with general food products.

***Non Conductive, Non Toxic & Phthalates free.**

Hose ID	WP	Coil Sizes
25mm	8 Bar	30M
32mm	8 Bar	30M
38mm	8 Bar	30M
51mm	8 Bar	30M
63mm	7 Bar	30M
76mm	6 Bar	30M
102mm	4 Bar	30M

DUCTING

Oregon PU (FGD-OS)



- ***Temperature:** -25 to +85c
- *Polyurethane PU with PVC Spiral
- ***Applications:** For suction & transport of abrasive & dry food products.

Hose ID	WP	Coil Sizes
20mm	0.6	10,30M
25mm	0.6	10,30M
32mm	0.6	10,30M
40mm	0.4	10,30M
51mm	0.4	10,30M
63mm	0.3	10M
76mm	0.3	10M
90mm	0.2	10M
102mm	0.2	10M
127mm	0.12	10M

Oregon PU Antistatic (FGD-OAS)



- ***Temperature:** -25 to +85c
- *Polyurethane PU with PVC Spiral Copper Wire
- ***Applications:** For suction & transport of abrasive & dry food products.

Hose ID	WP	Coil Sizes
20mm	0.6	10,30M
25mm	0.6	10,30M
32mm	0.6	10,30M
40mm	0.4	10,30M
51mm	0.4	10,30M
63mm	0.3	10M
76mm	0.3	10M
90mm	0.2	10M
102mm	0.2	10M
127mm	0.12	10M
140mm	0.1	10M
152mm	0.1	10M
203mm	0.1	10M

General Purpose (AD-GP-178)



- ***Temperature:** -40 to +120c
- *Black EPDM with Steel Helix Wire
- ***Applications:** Hot air, gas, fumes extraction or anywhere high temperature is required.

Hose ID	WP	Coil Sizes
40mm	0.6	10,30M
51mm	0.6	10,30M
63mm	0.6	10,30M
76mm	0.4	10,30M
90mm	0.4	10,30M
102mm	0.3	10M
127mm	0.3	10M
140mm	0.2	10M
152mm	0.2	10M
203mm	0.12	10M
254mm	0.1	10M
305mm	0.1	10M
406mm	0.1	10M

HOSE TESTING & MANAGEMENT SYSTEM

Hose Management Program

NFS offers a full trackable hose management system for tracking all hose's in your plant, The NFS Asset Management System couldn't be simpler to use. We provide each hose with its own unique barcode, when the barcode is scanned on your mobile device you can begin tracking and managing the asset across your organisation. The Asset Management System allows to track the asset throughout it's lifespan including physical location, manufacture and delivery data, service dates and more. As well as hose, the management system can also be used on other products such as valves & pumps.

Hose Pressure & Continuity Testing

Our on-site testing teams are your experienced partners to execute the pressure testing in order to guarantee the safety of your employees, product and the environment.

Our mobile test-unit will come to your site

- *To test your hoses (visual and hydrostatic testing)
- *Fix the hoses onsite if possible or required
- *Provide you a detailed report & asset management program
- *Replace any hoses that are required
- *We test Rubber, Composite or Stainless Braided Hoses

Our Hose Asset Management Systems also allows for tracking of hose's anywhere in your plant.



BSP SCREWED FITTINGS

Elbow Female/Male 90°



Black Steel Stainless

SIZE	CODE	CODE
8mm	BSEFM-008	SEFM-008
10mm	BSEFM-010	SEFM-010
15mm	BSEFM-015	SEFM-015
20mm	BSEFM-020	SEFM-020
25mm	BSEFM-025	SEFM-025
32mm	BSEFM-032	SEFM-032
40mm	BSEFM-040	SEFM-040
50mm	BSEFM-050	SEFM-050

Elbow - Female 90°



Black Steel Stainless

SIZE	CODE	CODE
6mm	BSEF-006	SEF-006
8mm	BSEF-008	SEF-008
10mm	BSEF-010	SEF-010
15mm	BSEF-015	SEF-015
20mm	BSEF-020	SEF-020
25mm	BSEF-025	SEF-025
32mm	BSEF-032	SEF-032
40mm	BSEF-040	SEF-040
50mm	BSEF-050	SEF-050
65mm	BSEF-065	SEF-065
80mm	BSEF-080	SEF-080
100mm	BSEF-100	SEF-100

Elbow - Female 45°



Black Steel Stainless

SIZE	CODE	CODE
8mm	BSEFM-008	SEFM45-08
10mm	BSEFM-010	SEFM45-10
15mm	BSEFM-015	SEFM45-15
20mm	BSEFM-020	SEFM45-20
25mm	BSEFM-025	SEFM45-25
32mm	BSEFM-032	SEFM45-32
40mm	BSEFM-040	SEFM45-40
50mm	BSEFM-050	SEFM45-50

Tees - Female



Black Steel Stainless

SIZE	CODE	CODE
6mm	BSTF-006	STF-006
8mm	BSTF-008	STF-008
10mm	BSTF-010	STF-010
15mm	BSTF-015	STF-015
20mm	BSTF-020	STF-020
25mm	BSTF-025	STF-025
32mm	BSTF-032	STF-032
40mm	BSTF-040	STF-040
50mm	BSTF-050	STF-050
65mm	BSTF-065	STF-065
80mm	BSTF-080	STF-080
100mm	BSTF-100	STF-100

BSP SCREWED FITTINGS

BSP MALE HOSE TAIL



SIZE	CODE
6mm	SMHT-006
8mm	SMHT-008
10mm	SMHT-010
15mm	SMHT-015
20mm	SMHT-020
25mm	SMHT-025
32mm	SMHT-032
38mm	SMHT-038
51mm	SMHT-051
63mm	SMHT-063
76mm	SMHT-076
102mm	SMHT-102

BSP REDUCING MALE HOSE TAIL

Hosetail x BSP Male



SIZE	CODE
10-08mm	SRHT-1008
12-08mm	SRHT-1208
12-10mm	SRHT-1210
20-08mm	SRHT-2008
20-10mm	SRHT-2010
20-12mm	SRHT-2012
25-10mm	SRHT-2510
25-12mm	SRHT-2512
25-20mm	SRHT-2520
38-12mm	SRHT-3812
38-20mm	SRHT-3820
38-25mm	SRHT-3825
38-32mm	SRHT-3832
50-20mm	SRHT-5020
50-25mm	SRHT-5025
50-32mm	SRHT-5032
50-38mm	SRHT-50-38

BSP FEMALE HOSE TAIL



SIZE	CODE
8mm	SFHT -008
10mm	SFHT -010
15mm	SFHT -015
20mm	SFHT -020
25mm	SFHT -025
38mm	SFHT -038
51mm	SFHT-051
63mm	SFHT-063
76mm	SFHT-076
102mm	SFHT-102

BSP REDUCING MALE HOSE TAIL

BSP Male x Hosetail



SIZE	CODE
10-08mm	SHTR-1008
12-08mm	SHTR-1208
12-10mm	SHTR-1210
20-08mm	SHTR-2008
20-10mm	SHTR-2010
20-12mm	SHTR-2012
25-10mm	SHTR-2510
25-12mm	SHTR-2512
25-20mm	SHTR-2520
38-12mm	SHTR-3812
38-20mm	SHTR-3820
38-25mm	SHTR-3825
38-32mm	SHTR-3832
50-20mm	SHTR-5020
50-25mm	SHTR-5025
50-32mm	SHTR-5032
50-38mm	SHTR-5038

BSP SCREWED FITTINGS

Reducing Hex Nipple



Black Steel Stainless

SIZE	CODE	CODE
08-06mm	BSRN-0806	SRN-0806
10-06mm	BSRN-1006	SRN-1006
10-08mm	BSRN-1008	SRN-1008
15-06mm	BSRN-1506	SRN-1506
15-08mm	BSRN-1508	SRN-1508
15-10mm	BSRN-1510	SRN-1510
20-08mm	BSRN-2008	SRN-2008
20-10mm	BSRN-2010	SRN-2010
20-15mm	BSRN-2015	SRN-2015
25-15mm	BSRN-2515	SRN-2515
25-20mm	BSRN-2520	SRN-2520
32-20mm	BSRN-3220	SRN-3220
32-25mm	BSRN-3225	SRN-3225
38-25mm	BSRN-3825	SRN-4025
38-32mm	BSRN-3832	SRN-4032
50-38mm	BSRN-5038	SRN-5040
75-63mm	BSRN-7563	SRN-8065

Hex Nipple



Black Steel Stainless

SIZE	CODE	CODE
6mm	BSHN-006	SSHN-006
8mm	BSHN-008	SSHN-008
10mm	BSHN-010	SSHN-010
15mm	BSHN-015	SSHN-015
20mm	BSHN-020	SSHN-020
25mm	BSHN-025	SSHN-025
32mm	BSHN-032	SSHN-032
40mm	BSHN-040	SSHN-040
50mm	BSHN-050	SSHN-050
65mm	BSHN-065	SSHN-065
80mm	BSHN-080	SSHN-080
100mm	BSHN-100	SSHN-100

Barrell-Union (F/F)



Black Steel Stainless

SIZE	CODE	CODE
8mm	BSUBF-008	SUBF-008
10mm	BSUBF-010	SUBF-010
15mm	BSUBF-015	SUBF-015
20mm	BSUBF-020	SUBF-020
25mm	BSUBF-025	SUBF-025
32mm	BSUBF-032	SUBF-032
40mm	BSUBF-040	SUBF-040
50mm	BSUBF-050	SUBF-050

Barrell-Union (M/F)



Black Steel Stainless

SIZE	CODE	CODE
8mm	BUBFM-008	SUBFM-008
10mm	BUBFM-010	SUBFM-010
15mm	BUBFM-015	SUBFM-015
20mm	BUBFM-020	SUBFM-020
25mm	BUBFM-025	SUBFM-025
32mm	BUBFM-032	SUBFM-032
40mm	BUBFM-040	SUBFM-040
50mm	BUBFM-050	SUBFM-050

BSP SCREWED FITTINGS

Toe Nipple



Black Steel Stainless

SIZE	CODE	CODE
8mm	BSTN-008	SSTN-008
10mm	BSTN-010	SSTN-010
15mm	BSTN-015	SSTN-015
20mm	BSTN-020	SSTN-020
25mm	BSTN-025	SSTN-025
32mm	BSTN-032	SSTN-032
40mm	BSTN-040	SSTN-040
50mm	BSTN-050	SSTN-050
65mm	BSTN-065	SSTN-065
80mm	BSTN-080	SSTN-080
100mm	BSTN-100	SSTN-100

Socket



Black Steel Stainless

SIZE	CODE	CODE
8mm	BSS-008	SS-008
10mm	BSS-010	SS-010
15mm	BSS-015	SS-015
20mm	BSS-020	SS-020
25mm	BSS-025	SS-025
32mm	BSS-032	SS-032
40mm	BSS-040	SS-040
50mm	BSS-050	SS-050
65mm	BSS-065	SS-065
80mm	BSS-080	SS-080
100mm	BSS-100	SS-100

Hex Bush



Black Steel Stainless

SIZE	CODE	CODE
08-06mm	BSB-0806	SHB-0806
10-06mm	BSB-01006	SHB-1006
10-08mm	BSB-1008	SHB-1008
15-06mm	BSB-1506	SHB-1506
15-08mm	BSB-1508	SHB-1508
15-10mm	BSB-1510	SHB-1510
20-08mm	BSB-2008	SHB-2008
20-10mm	BSB-2010	SHB-2010
20-15mm	BSB-2015	SHB-2015
25-15mm	BSB-2515	SHB-2515
25-20mm	BSB-2520	SHB-2520
32-20mm	BSB-3220	SHB-3220
32-25mm	BSB-3225	SHB-3225
40-25mm	BSB-4025	SHB-4025
40-32mm	BSB-4032	SHB-4032
50-40mm	BSB-5040	SHB-5040

Cross - Female



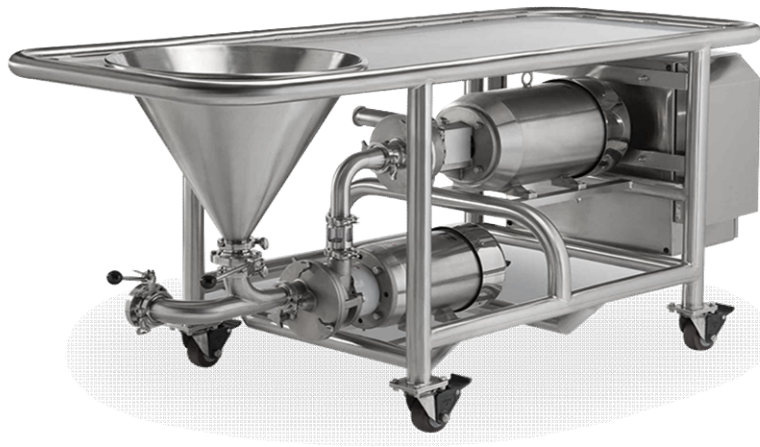
Black Steel Stainless

SIZE	CODE	CODE
8mm	BSCF-008	SCF-008
10mm	BSCF-010	SCF-010
15mm	BSCF-015	SCF-015
20mm	BSCF-020	SCF-020
25mm	BSCF-025	SCF-025
40mm	BSCF-040	SCF-040
50mm	BSCF-050	SCF-050

FISTRAM BLENDERS & MIXERS

The Fristam Powder Mixer is an extension of the shear pump which is designed to dissolve or emulsify and homogenise wet and dry ingredients into fluids. The Powder Mixer is a stainless steel skid consisting of a base frame and table which includes a powder hopper which is also a funnel. A self-priming centrifugal pump (Fristam FZ pump) pumps liquid past the base of the funnel, creating a vacuum which sucks in powder. The powder/liquid mixture is then homogenized using the Fristam shear pump.

The Powder Mixer can achieve perfect homogenization of the product, allowing for quick batches and removal of additional mixing or processing. The mixer is available in 40-100mm Inlet /Outlet pipe connections.



This powder mixer dissolves:

- *Stabilizers in the fermentation of milk products such as gelatine in cream, pectin in cream cheese
- *Milk powder for the production of milk mixed beverage, ice cream, fruit milk
- *Starch, salt and sugar, aspartame and other sugar substitutes
- *Protein powder (spray dried) for the production of bakery products
- *Flavours and citric acid
- *Wheat/rye flour for sourdough for producing breakfast cereals & ready to bake mixes

INOXPA SANITARY MIXING EQUIPMENT

Inoxpa M3 Table Blender (IB-M3)



- *EPDM Mechanical Seal
- *8,900 KG Solid Suction at 50 Brix
- *Up to 360,000 LPH
- *18.5KW Motor
- *18.5KW Centrifugal Pump
- *Actuated Butterfly Valves
- *EPDM Gasket
- *12,800 KG Solid Suction at 25 Bx
- *75 litre Hopper Capacity
- *76mm Suction
- *102mm Discharge

Inoxpa ME 4100 In Line Mixer (IIM-M41)



The ME-4100 series of the inline high shear mixers offers a possibility to pump, disperse, homogenize and emulsify products with one and the same equipment. Food processing production processes require this system as there are lines with ingredient separation or due to the lack of space inside the tanks to install vertical or botto of the tank mixers.

Inoxpa ME 6100 Tank Bottom Mixer (IIM-ME61)



The ME-6100 series of the high shear bottom of the tank mixers present a highly hygienic solution for the processes of dispersion, emulsifying, homogenisation and disintegration of solids in food-processing. These mixers can be used either in open or closed tanks at atmospheric pressure or under pressure/vacuum. The bottom of the tank mixers are designed for the applications of the highly viscous media and intended for work with anchor type agitators.

Inoxpa Bottom Side Entry Agitator (IA-SEA)

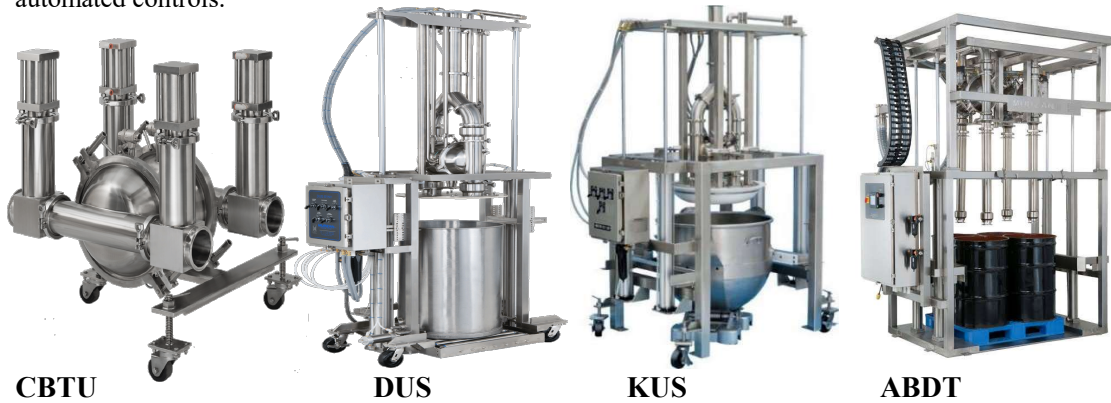


The bottom side entry agitators are used in process and storage tanks in the applications of the food-processing industry. The main application is agitation of low viscosity products like oil, milk, etc in large volume tanks.

***Further options are available for Table Blenders on request.**

MURZAN UNLOADING SYSTEMS

The Murzan Unloading Systems combine the pumping power of the PI-50 pump with precision motion to easily and efficiently unload all of your sanitary bulk containers. Each unloading system is equipped with the Murzan PI-50 double diaphragm pump along with Murzan stainless steel air cylinders to allow for effortless hands-free control of the unloading process. All of our unloading systems are equipped with a NEMA 4X Stainless Steel control panel to provide the highest quality automated controls.



The CBTU

The CBTU (Chicken Breast Transfer Unit) is the only sanitary pump built specifically for the transfer of poultry products. The high capacity check valves deliver high flow rates while maintaining the integrity of the products such as chicken tenders, fillets & disjointed wings. The CBTU can also be equipped with a custom hopper.

The DUS

There's simply no better drum unloader out there than the Dus. The Dus (Drum Unloading System) directs the full pumping power of the PI-50 pump into the Murzen unique follower plate design to fully unload even the most viscous products from metal or plastic drums up to 250 litres.

The KUS

The Kus (Kettle Unloading System) can unload any shape or size industrial kettle or mixing bowl. The unique Murzen contoured follower plate design will ensure the complete evacuation of your product no matter the shape of your bowl or kettle.

The AB

The AB pneumatic suction wand system is designed for quick easy & ergonomic unloading of 250 litre drums. By eliminating direct contact with wetted surfaces, the AB sanitary unloading system eliminates any potential for cross contamination.

The ABDT

The ABDT system is built for speed, it is specifically designed for rapid unloading of 250 litre drums. The ABDT uses an Allen Bradley micrologix 1500 with an HMI touchscreen for easy operation of the unit.

STAINLESS NITTO COUPLINGS

HI Coupla (Standard Series)

PF Female Plug



SIZE	CODE
1/4"	SNHC-20PF
3/8"	SNHC-30PF
1/2"	SNHC-40PF

PH Hose Plug



SIZE	CODE
1/4"	SNHC-20PH
3/8"	SNHC-30PH
1/2"	SNHC-40PH

PM Male Plug



SIZE	CODE
1/4"	SNHC-20PM
3/8"	SNHC-30PM
1/2"	SNHC-40PM

SH Hose Socket



SIZE	CODE
1/4"	SNHC-20SF
3/8"	SNHC-30SF
1/2"	SNHC-40SF

SM Male Socket



SIZE	CODE
1/4"	SNHC-20SM
3/8"	SNHC-30SM
1/2"	SNHC-40SM

SF Female Socket



SIZE	CODE
1/4"	SNHC-20SF
3/8"	SNHC-30SF
1/2"	SNHC-40SF

HI Coupla (200 Series) One Touch

SF Female Socket



SIZE	CODE
1/4"	SN200-20SF
3/8"	SN200-30SF
1/2"	SN200-40SF

SM Male Socket



SIZE	CODE
1/4"	SN200-20SM
3/8"	SN200-30SM
1/2"	SN200-40SM

SH Hose Socket



SIZE	CODE
1/4"	SN200-20SH
3/8"	SN200-30SH
1/2"	SN200-40SH

STAINLESS NITTO COUPLINGS

TSP Coupla Straight Through Series

TPF Female Plug



SIZE	CODE
1/4"	NH-2TPF
3/8"	NH-3TPF
1/2"	NH-4TPF
3/4"	NH-6TPF
1.0"	NH-8TPF

TPH Hose Plug



SIZE	CODE
1/4"	NH-2TPH
3/8"	NH-3TPH
1/2"	NH-4TPH
3/4"	NH-6TPH
1.0"	NH-8TPH

TPM Male Plug



SIZE	CODE
1/4"	NH-2TPM
3/8"	NH-3TPM
1/2"	NH-4TPM
3/4"	NH-6TPM
1.0"	NH-8TPM

TSH Hose Socket



SIZE	CODE
1/4"	NH-2TSH
3/8"	NH-3TSH
1/2"	NH-4TSH
3/4"	NH-6TSH
1.0"	NH-8TSH

TSF Female Socket



SIZE	CODE
1/4"	NH-2TSF
3/8"	NH-3TSF
1/2"	NH-4TSF
3/4"	NH-6TSF
1.0"	NH-8TSF

TSF Male Socket



SIZE	CODE
1/4"	NH-2TSM
3/8"	NH-3TSM
1/2"	NH-4TSM
3/4"	NH-6TSM
1.0"	NH-8TSM

SP Coupla Double Shut Off Series

SP Female Plug



SIZE	CODE
1/4"	NSP-2FP
3/8"	NSP-3FP
1/2"	NSP-4FP
3/4"	NSP-6FP
1.0"	NSP-8FP

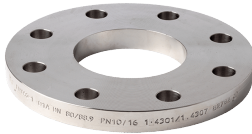
SP Female Socket



SIZE	CODE
1/4"	NSP-2FS
3/8"	NSP-3FS
1/2"	NSP-4FS
3/4"	NSP-6FS
1.0"	NSP-8FS

SLIP ON FLANGES

Slip on Table E (316 Stainless Steel)



SIZE	CODE
1"	STDPF-025
1.5"	STDPF-040
2"	STDPF-050
2.5"	STDPF-065
3"	STDPF-080
4"	STDPF-100
6"	STEF-150
8"	STEF-200
10"	STEF-250
12"	STEF-300

Slip on Table D (Carbon Steel)



SIZE	CODE
4"	CTDF-100
5"	CTDF-125
6"	CTDF-150
8"	CTDF-200
10"	CTDF-250
12"	CTDF-300

Slip on DIN 16 (316 Stainless Steel)



SIZE	CODE
2"	SSDF-050
3"	SSDF-080
4"	SSDF-100
5"	SSDF-125
6"	SSDF-150
8"	SSDF-200

Slip on Table E (Carbon Steel)



SIZE	CODE
4"	CTEF-100
5"	CTEF-125
6"	CTEF-150
8"	CTEF-200
10"	CTEF-250
12"	CTEF-300

Slip on ANSI 150 (316 Stainless Steel)



SIZE	CODE
1"	SA15PF-025
1.5"	SA15PF-040
2"	SA15PF-050
3"	SA15PF-080
4"	SA15PF-100
5"	SA15PF-125
6"	SA15PF-150
8"	SA15PF-200
10"	SA15PF-250
12"	SA15PF-300

Slip on DIN 16 (Carbon Steel)



SIZE	CODE
2"	CSDF-050
3"	CSDF-080
4"	CSDF-100
5"	CSDF-125
6"	CSDF-150
8"	CSDF-200

Slip on ANSI 150 (Carbon Steel)



SIZE	CODE
2"	CSAF-050
3"	CSAF-080
4"	CSAF-100
5"	CSAF-125
6"	CSAF-150
8"	CSAF-200

THREADED & WELD NECK FLANGES

Threaded Table E (316 Stainless Steel)



SIZE	CODE
1.0"	STTEF-025
1.1/2"	STTEF-040
2.0"	STTEF-050
2.1/2"	STTEF-065
3.0"	STTEF-080
4.0"	STTEF-100
6.0"	STTEF-150

Threaded Table E (Carbon Steel)



SIZE	CODE
1.0"	CTTEF-025
1.1/2"	CTTEF-040
2.0"	CTTEF-050
2.1/2"	CTTEF-065
3.0"	CTTEF-080
4.0"	CTTEF-100
6.0"	CTTEF-150

Threaded DIN 16 (316 Stainless Steel)



SIZE	CODE
1.0"	STDF-025
1.1/2"	STDF-040
2.0"	STDF-050
2.1/2"	STDF-065
3.0"	STDF-080
4.0"	STDF-100

Threaded DIN 16 (Carbon Steel)



SIZE	CODE
1.0"	CTDF-025
1.1/2"	CTDF-040
2.0"	CTDF-050
2.1/2"	CTDF-065
3.0"	CTDF-080
4.0"	CTDF-100

Threaded ANSI 150 (316 Stainless Steel)



SIZE	CODE
1.0"	STAF-025
1.1/2"	STAF-040
2.0"	STAF-050
2.1/2"	STAF-063
3.0"	STAF-080

Threaded ANSI 150 (Carbon Steel)



SIZE	CODE
1.0"	CTAF-025
1.1/2"	CTAF-040
2.0"	CTAF-050
2.1/2"	CTAF-063
3.0"	CTAF-080

Weld Neck (316 Stainless Steel)



SIZE	CODE
2"	SWNF-050
3"	SWNF-080
4"	SWNF-100
5"	SWNF-125
6"	SWNF-150
8"	SWNF-200
10"	SWNF-250

Weld Neck (Carbon Steel)



SIZE	CODE
2"	CWNF-050
3"	CWNF-080
4"	CWNF-100
5"	CWNF-125
6"	CWNF-150
8"	CWNF-200
10"	CWNF-250

BLIND FLANGES

Blind Table D (316 Stainless Steel)



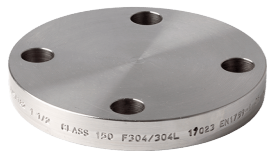
SIZE	CODE
2"	STDBF-050
3"	STDBF-080
4"	STDBF-100
5"	STDBF-125
6"	STDBF-150
8"	STDBF-200
10"	STDBF-250
12"	STDBF-300

Blind Table D (Carbon Steel)



SIZE	CODE
2"	CBTDF-050
3"	CBTDF-080
4"	CBTDF-100
5"	CBTDF-125
6"	CBTDF-150
8"	CBTDF-200
10"	CBTDF-250
12"	CBTDF-300

Blind Table E (316 Stainless Steel)



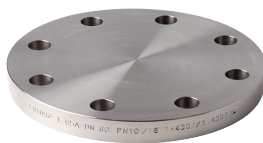
SIZE	CODE
2"	STEBF-050
3"	STEBF-080
4"	STEBF-100
5"	STEBF-125
6"	STEBF-150
8"	STEBF-200
10"	STEBF-250
12"	STEBF-300

Blind Table E (Carbon Steel)



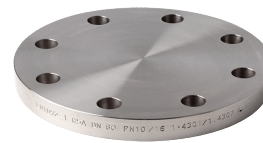
SIZE	CODE
2"	CBTEF-050
3"	CBTEF-080
4"	CBTEF-100
5"	CBTEF-125
6"	CBTEF-150
8"	CBTEF-200
10"	CBTEF-250
12"	CBTEF-300

Blind DIN 16 (316 Stainless Steel)



SIZE	CODE
2"	SBDF-050
3"	SBDF-080
4"	SBDF-100
5"	SBDF-125
6"	SBDF-150
8"	SBDF-200
10"	SBDF-250
12"	SBDF-300

Blind ANSI 150 (316 Stainless Steel)



SIZE	CODE
1"	SBA15F-025
1.5"	SBA15F-040
2"	SBA15F-050
3"	SBA15F-080
4"	SBA15F-100
5"	SBA15F-125
6"	SBA15F-150
8"	SBA15F-200

INOXPA SANITARY FILTERS



Side Entry Angular Filter

- *316 Stainless
- *EPDM Gasket
- *145 PSI (10 Bar)
- *-10 to 145c

SIZE	CODE
25mm	ISAF-025
40mm	ISAF-040
50mm	ISAF-050
65mm	ISAF-065
80mm	ISAF-080
100mm	ISAF-100

Top Entry Angular Filter

- *316 Stainless
- *EPDM Gasket
- *145 PSI (10 Bar)
- *-10 to 145c

SIZE	CODE
25mm	ITAF-025
40mm	ITAF-040
50mm	ITAF-050
65mm	ITAF-065
80mm	ITAF-080
100mm	ITAF-100

Y Type Filter

- *316 Stainless
- *EPDM Gasket
- *145 PSI (10 Bar)
- *-10 to 145c

SIZE	CODE
25mm	IYTF-025
40mm	IYTF-040
50mm	IYTF-050
65mm	IYTF-065
80mm	IYTF-080
100mm	IYTF-100

***Filters are available with Weld, BSM, Din or Tri Clover Ends**

Inoxpa Duplex Filter System

- *316 Stainless
- *Manual Butterfly Valves
- *EPDM Gasket
- *145 PSI (10 Bar)
- *-10 to 120c

SIZE	CODE
25mm	IDFS-025
40mm	IDFS-040
50mm	IDFS-050
65mm	IDFS-065
80mm	IDFS-080
100mm	IDFS-100



Filter Mesh

- Great mechanical strength
- Highly resistant to abrasivity and vibration.
- Longer screen life.
- Larger useful area than that of the standard perforated sheet screen.

Size varies ranging on the medium being strained.



STAINLESS BUTTWELD FITTINGS

90* Long Elbow



SIZE	CODE
15mm	SBE1-015
20mm	SBE1-020
25mm	SBE1-025
32mm	SBE1-032
40mm	SBE1-040
50mm	SBE1-050
65mm	SBE1-065
80mm	SBE1-080
100mm	SBE1-100
125mm	SBE1-125
150mm	SBE1-150
200mm	SBE1-200
250mm	SBE1-250
300mm	SBE1-300

90* Short Elbow



SIZE	CODE
15mm	SBE2-015
20mm	SBE2-020
25mm	SBE2-025
32mm	SBE2-032
40mm	SBE2-040
50mm	SBE2-050
65mm	SBE2-065
80mm	SBE2-080
100mm	SBE2-100
125mm	SBE2-125
150mm	SBE2-150
200mm	SBE2-200
250mm	SBE2-250
300mm	SBE2-300

Equal Tee



SIZE	CODE
15mm	SBET-015
20mm	SBET-020
25mm	SBET-025
32mm	SBET-032
40mm	SBET-040
50mm	SBET-050
65mm	SBET-065
80mm	SBET-080
100mm	SBET-100
125mm	SBET-125
150mm	SBET-150
200mm	SBET-200
250mm	SBET-250
300mm	SBET-300

Reducing Tee Tee



SIZE	CODE
15mm	SBRT-015
20mm	SBRT-020
25mm	SBRT-025
32mm	SBRT-032
40mm	SBRT-040
50mm	SBRT-050
65mm	SBRT-065
80mm	SBRT-080
100mm	SBRT-100
125mm	SBRT-125
150mm	SBRT-150
200mm	SBRT-200
250mm	SBRT-250
300mm	SBRT-300

STAINLESS BUTTWELD FITTINGS

Reducer

SIZE	CODE
20-15mm	SBWR-2015
25-15mm	SBWR-2515
25-20mm	SBWR-2520
32-20mm	SBWR-3220
40-25mm	SBWR-4025
40-32mm	SBWR-4032
50-40mm	SBWR-5040
65-50mm	SBWR-6550
80-50mm	SBWR-8050
80-65mm	SBWR-8065
100-80mm	SBWR-10080



180* Return

SIZE	CODE
15mm	SBPR-015
20mm	SBPR-020
25mm	SBPR-025
32mm	SBPR-032
40mm	SBPR-040
50mm	SBPR-050
65mm	SBPR-065
80mm	SBPR-080
100mm	SBPR-100
125mm	SBPR-125
150mm	SBPR-150
200mm	SBPR-200
250mm	SBPR-250
300mm	SBPR-300



End Cap

SIZE	CODE
15mm	SBEC-015
20mm	SBEC-020
25mm	SBEC-025
32mm	SBEC-032
40mm	SBEC-040
50mm	SBEC-050
65mm	SBEC-065
80mm	SBEC-080
100mm	SBEC-100
125mm	SBEC-125
150mm	SBEC-150
200mm	SBEC-200
250mm	SBEC-250
300mm	SBEC-300



45* Elbow

SIZE	CODE
15mm	SBWE3-015
20mm	SBWE3-020
25mm	SBWE3-025
32mm	SBWE3-032
40mm	SBWE3-040
50mm	SBWE3-050
65mm	SBWE3-065
80mm	SBWE3-080
100mm	SBWE3-100
125mm	SBWE3-125
150mm	SBWE3-150
200mm	SBWE3-200
250mm	SBWE3-250
300mm	SBWE3-300



CARBON STEEL BUTTWELD FITTINGS

90* Long Elbow

SIZE	CODE
15mm	CSBE1-015
20mm	CSBE1-020
25mm	CSBE1-025
32mm	CSBE1-032
40mm	CSBE1-040
50mm	CSBE1-050
65mm	CSBE1-065
80mm	CSBE1-080
100mm	CSBE1-100
150mm	CSBE1-150



90* Short Elbow

SIZE	CODE
15mm	CSBE2-015
20mm	CSBE2-020
25mm	CSBE2-025
32mm	CSBE2-032
40mm	CSBE2-040
50mm	CSBE2-050
65mm	CSBE2-065
80mm	CSBE2-080
100mm	CSBE2-100
150mm	CSBE2-150

Reducing Tee Tee

SIZE	CODE
20-15mm	CWRT-2015
25-20mm	CWRT-2520
32-25mm	CWRT-3225
40-32mm	CWRT-4032
50-25mm	CWRT-5025
50-40mm	CWRT-5040
65-50mm	CWRT-6550
80-50mm	CWRT-8050
80-65mm	CWRT-8065
100-80mm	CWRT-0080



Equal Tee

SIZE	CODE
15mm	CSBET-015
20mm	CSBET-020
25mm	CSBET-025
32mm	CSBET-032
40mm	CSBET-040
50mm	CSBET-050
65mm	CSBET-065
80mm	CSBET-080
100mm	CSBET-100
150mm	CSBET-150



End Cap

SIZE	CODE
15mm	CSEC-015
20mm	CSEC-020
25mm	CSEC-025
32mm	CSEC-032
40mm	CSEC-040
50mm	CSEC-050
65mm	CSEC-065
80mm	CSEC-080
100mm	CSEC-100



45* Elbow

SIZE	CODE
15mm	CSBE3-015
20mm	CSBE3-020
25mm	CSBE3-025
32mm	CSBE3-032
40mm	CSBE3-040
50mm	CSBE3-050
65mm	CSBE3-065
80mm	CSBE3-080
100mm	CSBE3-100



CARBON STEEL BUTTWELD FITTINGS

Concentric Reducer

SIZE	CODE
20-15mm	CSBCR-2015
25-15mm	CSBCR-2515
25-20mm	CSBCR-2520
32-20mm	CSBCR-3220
40-25mm	CSBCR-4025
40-32mm	CSBCR-4032
50-40mm	CSBCR-5040
65-50mm	CSBCR-6550
80-50mm	CSBCR-8050
80-65mm	CSBCR-8065



180* Return

SIZE	CODE
15mm	CSBWR-015
20mm	CSBWR-020
25mm	CSBWR-025
32mm	CSBWR-032
40mm	CSBWR-040
50mm	CSBWR-050
65mm	CSBWR-065
80mm	CSBWR-080
100mm	CSBWR-100
150mm	CSBWR-150



PNEUMATIC TUBING

Nylon Tube (PNT)



***Temperature:** -40 to +90c

***Applications:** Pneumatic lines, Process Control, Air & Water.

***Colours:** Black (Standard), Clear, Blue, Green, Yellow & Red

Tube ID	WP	Coil Size
4mm	17 Bar	20,100M
6mm	17 Bar	20,100M
8mm	17 Bar	20,100M
10mm	17 Bar	20,100M
12mm	8 Bar	20,100M
20mm	8 Bar	20,100M

Polyethylene Tube (PPFT)



***Temperature:** -40 to +60c

***Applications:** Pneumatic lines, Process Control, Air & Water.

***Colours:** Black (Standard), Clear, Blue, Green, Yellow & Red

Tube ID	WP	Coil Size
4mm	8 Bar	20,100M
6mm	8 Bar	20,100M
8mm	8 Bar	20,100M
10mm	8 Bar	20,100M
12mm	8 Bar	20,100M

***FDA Compliant**

Polyurethane Tube (PPT)



***Temperature:** -0 to +60c

***Applications:** Pneumatic lines, Process Control, Air & Water.

***Colours:** Black (Standard), Clear, Blue, Green, Yellow & Red

Tube ID	WP	Coil Size
4mm	8 Bar	20,100M
6mm	8 Bar	20,100M
8mm	8 Bar	20,100M
10mm	8 Bar	20,100M
12mm	8 Bar	20,100M

BRECCONCHERRY TANK CLEANERS

Turbo SSB 40 Rotary Cleaning Ball

- *316 Stainless Steel
- *360 Degree Spray Pattern
- *2-5 Bar Working Pressure
- *Up to 95c Operating Temp
- *61 Lpm (Max) Flow Rate
- *3.0 M Cleaning Diametre
- *Threaded Connection 10mm
- *Clip or Connection for Pipe 15mm



Turbo SSB 75 Rotary Cleaning Ball

- *316 Stainless Steel
- *360 Degree Spray Pattern
- *2-10 Bar Working Pressure
- *Up to 95c Operating Temp
- *153 Lpm (Max) Flow Rate
- *4.7 M Cleaning Diametre
- *Threaded Connection 20mm
- *Clip or Connection for Pipe 25mm



Turbo SSB 125 Rotary Cleaning Ball

- *316 Stainless Steel
- *360 Degree Spray Pattern
- *2-6 Bar Working Pressure
- *Up to 95c Operating Temp
- *408 Lpm (Max) Flow Rate
- *10.0 M Cleaning Diametre
- *Threaded Connection 32mm
- *Clip or Connection for Tube 40mm



Troll Rotary Cleaning Ball

- *316 Stainless Steel
- *360 Degree Spray Pattern
- *3-12 Bar Working Pressure
- *Up to 120c Operating Temp
- *270 Lpm (Max) Flow Rate
- *7.0 M Cleaning Diametre
- *Threaded Connection 40mm



Twister Orbital Cleaner

- *316 Stainless Steel
- *360 Degree Spray Pattern
- *4-10 Bar Working Pressure
- *Up to 95c Operating Temp
- *97 Lpm (Max) Flow Rate
- *16.0 M Cleaning Diametre
- *Threaded Connection 20mm
- *Clip Connection for Tube 20mm



Typhoon Orbital Cleaner

- *316 Stainless Steel
- *360 Degree Spray Pattern
- *4-10 Bar Working Pressure
- *Up to 95c Operating Temp
- *97 Lpm (Max) Flow Rate
- *17.0 M Cleaning Diametre
- *Threaded Connection 25mm
- *Clip Connection for Tube 25mm



Tornado Orbital Cleaner

- *316 Stainless Steel
- *360 Degree Spray Pattern
- *4-8 Bar Working Pressure
- *Up to 95c Operating Temp
- *378 Lpm (Max) Flow Rate
- *27.0 M Cleaning Diametre
- *Threaded Connection 40mm
- *Clip Connection for Tube 40mm



Tornado 4 Orbital Cleaner

- *316 Stainless Steel
- *360 Degree Spray Pattern
- *4-10 Bar Working Pressure
- *Up to 95c Operating Temp
- *790 Lpm (Max) Flow Rate
- *33.0 M Cleaning Diametre
- *Threaded Connection 40mm
- *Clip Connection for Tube 40mm



INOXPA SPRAY BALLS



Type A

- *316 Stainless Steel
- *360 Degree Spray Pattern
- *Up to 95c Operating Temp
- *BSP Connection

Size	Code	Flow	Radius	Pressure
25mm	IASB-025	283 Lpm	1.25M	2.5 Bar
40mm	IASB-040	383 Lpm	1.75M	2.5 Bar
50mm	IASB-050	916 Lpm	3.0M	3.5 Bar
65mm	IASB-065	966 Lpm	3.5M	3.5 Bar

Type B

- *316 Stainless Steel
- *360 Degree Spray Pattern
- *Up to 95c Operating Temp
- *Clip Connection

Size	Code	Flow	Radius	Pressure
25mm	IBSB-025	53 Lpm	1.25M	2.5 Bar
40mm	IBSB-040	78 Lpm	1.75M	2.5 Bar
50mm	IBSB-050	175 Lpm	3.0M	3.5 Bar
65mm	IBSB-065	193 Lpm	3.5M	3.5 Bar

Type C

- *316 Stainless Steel
- *360 Degree Spray Pattern
- *Up to 95c Operating Temp
- *Weld Connection

Size	Code	Flow	Radius	Pressure
25mm	ICSB-025	53 Lpm	1.25M	2.5 Bar
40mm	ICSB-040	78 Lpm	1.75M	2.5 Bar
50mm	ICSB-050	175 Lpm	3.0M	3.5 Bar
65mm	ICSB-065	193 Lpm	3.5M	3.5 Bar

INOXPA TANK CLEANING EQUIPMENT

Inoxpa Manual CIP System



- * AISI 304 insulated tank (500L)
- * Estampinox EFI discharge pump (4 Kw).
- * Manually operated Inoxpa Butterfly Valves
- * Pressure gauge at the pump outlet
- * Stainless steel electric box with temperature control
- * Electric heating in the tank
- * AISI 304 frame with wheels
- * Cleans tanks of up to 3,000L

Inoxpa Automated CIP Skid System



- * Two AISI 316 tanks, jacketed, of 1000L
- * One AISI 304 tank, not jacketed, 1500L for recovered water
- * Heating by a steam heat exchanger, with a graduated acting steam valve
- * Heating by a steam heat exchanger, with a
- * Graduated acting steam valve
- * Peristaltic, piston and membrane pumps for dosing
- * Pneumatic butterfly valves with control top.
- * Temperature control inside the tanks
- * Flow control in the return line
- * 5.5kW Hyginox SE impulsion pump
- * Filter in return line
- * Level control in the tanks
- * Pressure gauge at the pump impulsion
- * 10" touch screen
- * PLC Siemens system control

RAMEX STAINLESS HOSE REELS

RSR1000

*1/2" Washdown Hose

*15 Metres

*Spring Retractable



RSR1100

*1/2" Washdown Hose

*20 Metres

*Spring Retractable



RSR3500

*1/2" Washdown Hose

*25 Metres

*Spring Retractable



RSR5000

*3/4" Washdown Hose

*15 Metres

*Spring Retractable



RSR5100

*3/4" Washdown Hose

*20 Metres

*Spring Retractable



RSR3500

*3/4" Washdown Hose

*25 Metres

*Spring Retractable



ASHCROFT PRESSURE GAUGES

Tri Clover Pressure Gauge

- *Bottom or Rear Entry in 1.5" or 2.0"
- *Stainless Case & Shell
- *Up to 93c Operating Temp
- *Up to 149c CIP Temp
- *Liquid Filled
- *PSI Measurement
- *2.5 or 4" Face Size



SIZE	CODE
0-100 Psi	ASCPG-01
0-200 Psi	ASCPG-02
0-400 Psi	ASCPG-04
0-600 Psi	ASCPG-06
0-800 Psi	ASCPG-08
0-1000 Psi	ASCPG-010
0-1500 Psi	ASCPG-015
0-2000 Psi	ASCPG-020

Tri Clover Pressure Gauge

- *Bottom or Rear Entry in 1.5" /2.0" Tri Clover
- *Stainless Case & Shell
- *Up to 93c Operating Temp
- *Up to 149c CIP Temp
- *Liquid Filled
- *Bar Measurement
- *2.5 or 4" Face Size



SIZE	CODE
0-1 Bar	ASCG-B-01
0-1.6 Bar	ASCG-B-016
0-2.5 Bar	ASCG-B-025
0-4 Bar	ASCG-B-04
0-6 Bar	ASCG-B-06
0-10 Bar	ASCG-B-010
0-16 Bar	ASCG-B-016
0-25 Bar	ASCG-B-025
0-40 Bar	ASCG-B-040
0-60 Bar	ASCG-B-060
0-100 Bar	ASCG-B-100

Threaded Pressure Gauge

- *Bottom Entry in 1/2" BSP/ NPT
- *Up to 93c Operating Temp
- *Stainless Case & Shell
- *Liquid or Dry Filled
- *KPA Measurement
- *2.5" or 4" Face



SIZE	CODE
0-50 kpa	ASTKG-050
0-100 kpa	ASTKG-100
0-200 kpa	ASTKG-200
0-400 kpa	ASTKG-400
0-600 kpa	ASTKG-600
0-800 kpa	ASTKG-800
0-1000 kpa	ASTKG-1000
0-2000 kpa	ASTKG-2000
0-4000 kpa	ASTKG-4000

Threaded Pressure Gauge

- *Bottom Entry in 1/2" BSP/ NPT
- *Up to 93c Operating Temp
- *Stainless Case & Shell
- *Liquid or Dry Filled
- *Bar Measurement
- *2.5" or 4" Face



SIZE	CODE
0-0.6 Bar	ASTBPG-06
0-1 Bar	ASTBPG-01
0-2 Bar	ASTBPG-02
0-2.5 Bar	ASTBPG-025
0-4 Bar	ASTBPG-04
0-6 Bar	ASTBPG-06
0-8 Bar	ASTBPG-080
0-10 Bar	ASTBPG-010
0-16 Bar	ASTBPG-016
0-25 Bar	ASTBPG-025
0-40 Bar	ASTBPG-040
0-60 Bar	ASTBPG-060

***PSI available on request**

ASHCROFT BI METAL THERMOMETER

EI Series



The Ashcroft EI bimetallic thermometer provides high quality and performance.

Features

- *Robust, hermetically sealed stainless steel case
- *External adjustment allows quick, limited span adjustments; reduces maintenance and recalibration costs
- *Maxivision[®] dial for easy readability and parallax elimination

Specifications

- *Accuracy: $\pm 1\%$ full scale ASME B40.200 (B40.3 Grade A)
- *Dial size: 2", 3" and 5"
- *Everyangle[™], rear and lower connections
- *Silicone dampened coil
- *NEMA 4X / IP66 enclosure
- *-50 to 500c Temp Range

The Ashcroft[®] flanged thermowell is used when pressure, high velocity and corrosive process media exist. This serves to isolate and protect the sensing instrument, and permits removal of a sensing instrument without shutting down the process. Thermowells are offered in a wide selection of materials, sizes and dimensions; a perfect solution for protecting the process and extending product service life.

Flanged Thermowell



Specifications

- *Raised face, flat face and ring joint versions (ASME B16.5)
- *Process connection: 1", 1 1/2" and 2"
- *Flange ratings: 150, 300, 600, 900, 1500 and 2500 class

YOKOGAWA SANITARY FLOW METERS

Electromagnetic Sanitary Flow Meter



Engineered for Food & Beverage industry applications, works with any product that is conductive

Features

- *Suitable for constant process temperatures: -25 to +90c
- *Available in 240V or 24V
- *High accuracy (+/-0.2% +/-2mm/s)
- *200,000 line inbuilt active data logger – standard
- *PFA Food Grade liner
- *Pulse output
- *Sizes 15mm – 100mm
- *-40 to 140c operating temperature
- *IP68 rated suitable for washdown
- *High accuracy (+/-0.2% +/-2mm/s)
- *Dual Frequency
- *Tri Clamp Connections
- *Alarm contact output
- *Tri Clamp or Din Connection

Applications:

- *Precise blending, dosing and batching
- *Beverages (soft drinks, beer, wine, fruits juices etc.)
- *Milk and other dairy products
- *CIP media (incl. acids and caustic solutions)
- *Products containing solids (e.g. yoghurt with cereals etc.)
- *Tank filling, truck filling

Coriolis Mass Sanitary Flow Meter



Features

- *-200 to 350c operating temperature
- *Sizes 15mm – 100mm
- *Tri Clamp, Din or Flanged Connection
- *FDA Approved

The RotaMASS 3 Series mass flow meter features a heavy wall, seamless, dual tube design uniquely decoupled from any process vibration or pipeline stress guaranteeing reliability and output stability. Nine different detectors enable customization of the meter for the best combination of mass flow range, pressure drop, and accuracy at the lowest possible cost. The versatile RotaMASS can be used in the most difficult applications from cryogenics to molten liquids as well as sanitary applications and aggressive chemicals. With its multi-measurement and multi-parameter capability, the RotaMASS is essentially a process control station.

ANDERSON-NEGELE CONDUCTIVITY SENSOR

ILM-4 Conductivity Sensor



Measurement of conductivity of liquid media for

- *Controlling of CIP processes (e. g. phase separation detergents / water)
- *Concentration measurement (e.g. Alkali and acid concentration in remaking)
- *Monitoring of product quality & quality control

The inductive conductivity sensor from Anderson-Negele is the continuation of the success story of the ILM series. The sensor has undergone systematic development to meet the demand for intelligent sensors for hygienic applications. Unlike other inductive sensors, the ILM-4 has a fast reacting integral PT1000 sensor that can be used to monitor process temperature eliminating the need for a second temperature sensing device. Standard with all models is an operational range from 0 up to 2,000,000 microSiemens/cm and temperature compensation over a range of 0° and 150°C.

ANDERSON-NEGELE TURBIDITY SENSORS

Turbidity Sanitary Sensor ITM-51 Series

The ITM-51 is Anderson-Negele's turbidity meter for use in higher turbidity applications. Designed to meet the specific needs of dairy, food and beverage processing plants, the ITM-51 is the choice for phase separation, CIP pre-rinse and brewing specific applications involving wort filtering and yeast separation. The ITM-51's compact, modular design is a highly configurable, cost-effective solution to meet your specific application needs. With expanded capabilities in pressure, temperature and measuring range, the ITM-51 can now go beyond the typical applications given to turbidity sensors, making the ITM-51 capable of furthering your ability to meet sustainment goals.



- *-40 to 100c operating temperature
- *CIP/SIP cleaning to max. 130 °C (max. 30 minutes)
- *Sizes 25mm – 50mm *Max.: 20 bar (290 psi)
- *Frontflush sensor in compact and modular design
- *Extended temperature and pressure range
- *Stainless 316L Housing rated to IP 69
- *No color dependency (wave length 860 nm)
- *Independent to reflexions at small diameters
- *High reproducibility: ≤ 1 % of full scale
- *3-A conformity for version with process connections

Applications:

- *Phase Separation (whey-cream-milk)
- *Serpator Control
- *Quality Control of Product
- *CIP-return line (monitoring of pre-rinse water to product leftovers)

Turbidity Sanitary Sensor ITM-4 Series

The Anderson ITM-4 Turbidity meter offers precision measurement of suspended solids through the use of infrared light. Utilizing a 4-beam technology the ITM-4 has multiple emitters & receptors to produce an online, real-time measurement of turbidity that can yield information critical to both process function and product quality. There are standard switching and analog (4-20mA) outputs along with 4 remote selectable ranges that are available to handle different products on the same process line. Specifying the ITM-4 is easy with the line connection size as the only decision that needs to be made. Configuration is done with a simple three button navigation of the on-screen menus that makes selecting units of measure, analog output range, & switch point for your product a quick task. Most important to food and dairy processors is the robust design which offers lower cost of ownership than many other turbidity meters.



- *-40 to 100c operating temperature
- *CIP/SIP cleaning to max. 130 °C (max. 30 minutes)
- *Sizes 25mm – 50mm *Max.: 10 bar (145 psi)
- *Measurement from 0 up to 5000 NTU resp. 0 up to 1250 EBC
- *Compact device, no separate evaluation unit necessary
- *4 free selectable and externally switchable measurement ranges
- *Stainless 316L Housing rated to IP 69

SICK LEVEL SENSORS

LFP Inox Series Hygienic Level Sensor

The LFP Inox is a hygienic level sensor for liquids using TDR technology – a process for determining the time of flight of electromagnetic waves. The time difference between the sent pulse and the reflected pulse is used to generate a level signal, both as a continuous value (analog output) and a freely positionable switching point (switching output). The use of FDA-compliant materials in an EHEDG-certified design means that the LFP Inox can be relied upon for optimum & unrestricted cleaning, even in applications with the most stringent hygiene requirements. Its modular connection system allows simple and flexible installation in any application. Thanks to high temperature and pressure resistance, unrestricted use is possible under CIP and SIP conditions. This impressive profile is topped off with communication capability via IO-Link to the superordinate control units.



Applications

- *Level monitoring in buffer tanks of filling systems & filling machines
- *Level monitoring in rinsing systems
- *Level monitoring in CIP systems
- *Level measurement in mixing systems
- *Level monitoring in processes with difficult ambient conditions

*Rod probe can be cut to length manually up to 4,000 mm long with $Ra \leq 0.8 \mu m$

*Process temperature up to 180 °C, process pressure up to 16 bar

*High enclosure rating: IP 67 and IP 69, autoclavable *One Calibration suits all product types

Product Types

*Milk *Creams *Yoghurt *Pastes *Beer *Spirits *Soft & Sports Drinks *Olive Oil

LFP Cubic Series Industrial Level Sensor

The LFP Cubic is a level sensor for liquids using TDR technology – a process for determining the time of flight of electromagnetic waves. The time difference between the sent pulse and the reflected pulse is used to generate a level signal. The sensor can emit this as a continuous measured value (analog output) and a freely positionable switching point (switching output). The LFP Cubic is compatible for use in virtually any liquid. Thanks to its modular probe, the sensor can be integrated quickly into any application. It can even be used in deposit-forming & foaming liquids. The sensor's intuitive setup uses four pushbuttons & a display to ensure quick & easy adaptation to the desired application. Remote amplifier, IO-Link interface, and a design which features a process connection in titanium are additional features for versatile use.



Applications

- *Monitoring coolants and lubricants in machine tooling
- *Monitoring filling tanks in automobile assembly
- *Level monitoring in processes with difficult ambient conditions

*Interchangeable rod probe which can be cut to lengths between 200 mm and 2,000 mm

*Process temperature up to 100 °C, process pressure up to 10 bar

*High enclosure rating of IP 67, rotatable housing and remote amplifier

SICK LEVEL SENSORS

UP56 Pure Series Ultrasonic Sensor

The non-contact ultrasonic level sensors from the UP56 Pure product family are a range of products specialized for wet chemical processes in the electronic and solar industry. Due to their PTFE-protected transducer they are very hardwearing and durable and are designed to be used in highly concentrated acids and alkalines. The UP56 Pure is easy and fast to integrate thanks to the industry specific GF process connection. A high level of accuracy can also be achieved with fluctuating liquid densities, thus facilitating the use of dosing applications. In systems where the installation is extremely cramped, the UP56 Pure Mini is the perfect solution thanks to its very compact design. The use in containers with a lot of built-in components is easily resolved by means of an immersion pipe. The measurement range, output, and filters of the UP56 product family is easy and convenient to adjust with the PC-based programming tool Connect+.



Applications

*Fill level measurement of feed tanks for dosing of chemicals

- *Ultrasonic level sensor with very high chemical resistance
- *Non-contact measurement in immersion pipe of up to 1,500 mm
- *PTFE-coated membrane and GF D40 process connection made of PTFE
- *Pressure resistant up to 6 bar, temperature resistant up to 85°C
- *Analog output selectable between 4 mA to 20 mA and 0 V to 10 V

GRF18S Series Optical Level Switch

The GRF18S is a compact optical level switch which is characterized mainly by its extremely simple commissioning. The proven technology of the energetic photoelectric proximity sensor from SICK is the foundation for the sensor. This allows for easy, rugged and reliable sensor construction. Thanks to the use of high-quality materials such as stainless steel 1.4404 and polysulfone as well as the housing design in enclosure rating IP69, the GRF18S guarantees high process reliability, even under harsh ambient conditions outside the tank. Quick and problem-free commissioning, without medium calibration, reduces not only commissioning costs, but also maintenance. Due to the optical technology, the GRF18S is particularly well-suited for water-based media.



Applications

- *Level monitoring, in particular in watery and water-based fluids
- *Dry-run protection for pumps
- *Level monitoring in rinsing units of cleaning systems

- *Rugged fill level measurement in fluid media
- *IP 67 and IP 69 enclosure rating
- *Process temperature up to 55 °C, process pressure up to 16 bar
- *Highly medium resistant due to stainless steel housing 1.4404, polysulfone apex
- *FDA compliant, UL
- *Output available as PNP or NPN transistor

SICK LEVEL SENSORS

LFV300 Series Vibrating Level Switch

The LFV300 product family of universal vibrating level switches precisely detects predefined liquid levels in systems to the millimeter – even under difficult operating conditions. The switches can emit a signal to prevent overfilling, a switching signal for refilling, or a dry-run signal for pump protection. The LFV300 works independently of the liquid and is wear-free and maintenance-free. A wide selection of flange, threads, & hygienic connections together with a modular device concept enable customer-specific solutions. The device is suitable for hygienic applications & can be cleaned using SIP/CIP. There are also variants for use in explosive atmospheres, to prevent overfilling in compliance with WHG, and with marine certification (GL). Besides the rugged LFV310 standard device, there are LFV330 tube-extended variants for reliable vertical mounting to bridge sensing ranges up to 6 m.



Applications

- *Level monitoring, in particular in watery and water-based fluids
- *Dry-run protection for pumps
- *Level monitoring in rinsing units of cleaning systems

- *Hygienic designs according to EHEDG and FDA, compatible for CIP and SIP
- *Process temperature up to 250 °C
- *Tube extension up to 6 m in length
- *Immune to deposit formation
- *Commissioning without filling

LFV200 Series Vibrating Level Switch

The vibrating level switch of the LFV200 product family detects the pre-defined levels in liquid systems with maximum precision. Whether indicating that a container has reached its maximum fill level (overflow protection) or that it is empty or used in pipes to prevent the pumps from running dry, the LFV200 works with all liquids and is wear- and maintenance-free. A high surface quality and the rugged tuning fork made of stainless steel make the LFV200, in combination with aseptic process connections, the first choice for applications even with the strictest hygiene requirements. With the LFV230, extended pipe variants up to 1,200 mm are available. With IO-Link, the oscillation frequency, amplitude and temperature of the sensor can be read out in addition to the switching signal, which enables extended diagnostics and predictive maintenance.



Applications

- *Point level measurement in storage tanks
- *Point level measurement in release agent tanks
- *Monitoring of pouring machine supply lines
- *Point level measurement in CIP storage tank

- *Hygienic designs with polished surface, CIP- and SIP-capable
- *Process temperature up to 150 °C
- *Two electrical output versions & IO-Link available
- *Immune to deposit formation
- *Pipe extension up to 1,200 mm
- *Housing made of 316L stainless steel

SICK PRESSURE SENSORS

PBSH Series Hygienic Compact Pressure Switch

The electronic pressure switch PBS Hygienic has been designed for use in the food & beverage industry. The wetted parts are gap-free and have no dead spaces. Their high-quality stainless steel surfaces are smooth and easy to clean. The highly resistant stainless steel membrane is welded to the hygienic process connection without gaps or edges. The device is designed for CIP and SIP processes. This enables safe hygienic operation in conjunction with optimized system throughout. The PBS Hygienic is available with up to two switching outputs, an analog output and IO-Link in a single device. Its intuitive configuration via three large pushbuttons & display facilitates operation. The housing can be rotated in two ways, allowing the display & electrical connection to be aligned according to specific installation situation. Available with a variety of measuring ranges and process connections, the PBS Hygienic is suitable for universal use.



Applications

- *Hygienic pressure measurement & monitoring in the food industry
- *Bottle filling machines
- *Packaging machines
- *Hydrostatic level measurement of liquids in tall tanks

- *Hygienically-graded pressure switch with display for the food and beverage industry
- *Pressure values are indicated on the display
- *Unit of pressure value in the display can be switched
- *Wetted parts are made from stainless steel
- *Individually programmable switching outputs and analog output
- *Output states are indicated separately via large LEDs
- *IO-Link
- *Wetted parts are made from stainless steel
- *Process temperature up to 180 °C

PBS Series Universal Pressure Switch

The PBS is an electronic pressure switch, pressure transmitter & display in one. It is available with up to two switching output, analog output and IO-Link in a single device. Its intuitive configuration via three large pushbuttons & display facilitates operation. The housing can be rotated in two ways. This means that the display & electrical connection can be aligned to match the specific installation situation. The PBS can be utilized in a wide range of applications due to its gauge pressure measuring ranges between 0 bar - 1 bar and 0 bar - 600 bar. In addition, absolute pressure and compound measuring ranges are available. The PBS features a fully welded stainless steel membrane, making it suitable for use with a host of corrosive media.



Applications

- *Measuring pressure, level, and temperature in industrial applications
- *Measuring pressure, level, and temperature in machine hydraulics

YOKOGAWA PRESSURE TRANSMITTERS

The EJA-E series of transmitters is Yokogawa's most recent evolution of the DPharp family. Released in 2012, it combines the ruggedness and success of the work-horse EJA-E series with the performance of the EJX-A series.

EJA530E In-Line Mount Gauge Pressure Transmitter



Features

- ±0.055% Accuracy
- ±0.1% Stability per 10 years
- 90 msec Response Time

EJA430E Traditional-mount Gauge Pressure Transmitter



Features

- ± 0.055% Accuracy (0.04% Accuracy *optional*)
- ± 0.1% Stability per 10 years
- 90 ms Response Time
- Local Parameter Setting (LPS)
- Available with HART 5/7, 1 to 5V HART 7 (Low Power), FOUNDATION Fieldbus, PROFIBUS PA, or BRAIN communication.

EJA438E Gauge Pressure Transmitter with Remote Diaphragm Seal



Features

- ± 0.2% Accuracy
- 200 ms Response Time
- Exida and TUV SIL2 / SIL3 Certified
- Local Parameter Setting (LPS)
- 10-segment Signal Characterizer
- Active Capillary Fill Fluid Density Compensation

YOKOGAWA PRESSURE TRANSMITTERS

EJXC50A, EJAC50E Gauge Pressure Direct Mounted Seal

Direct Mounted Diaphragm Seal System consists of gauge pressure transmitter with single direct mount diaphragm seal. Suitable for various kinds of pressure measurement.



Features

High performance, high accuracy and high reliability.
Fast response: 120 ms

EJXC80A, EJAC80E Differential Pressure Direct Mounted Seal

Direct Mounted Diaphragm Seal System consists of gauge pressure or differential pressure transmitter with single direct mount diaphragm seal. Suitable for various kinds of pressure measurement.



Features

High performance, high accuracy and high reliability.
Fast response: 120 ms

EJXC40A Digital Remote Sensor (DRS) Differential Pressure System

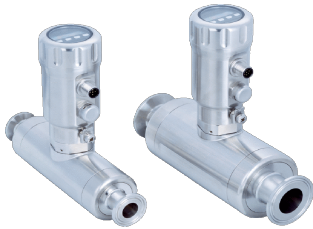
The EJXC40A Digital Remote Sensor (DRS) transmitter connects two pressure sensors, the master sensor (for high-pressure side) and remote sensor (for low-pressure side) with DRS dedicated communication cable to measure differential pressure. The DP is transmitted via a 4 to 20 mA analog signal. EJXC40A is suitable to measure liquid, gas, or steam flow as well as liquid level, density and pressure.



SICK HYGIENIC FLOWMETER

Dosic Series Ultrasonic Flowmeter

The non-contact DOSIC® flowmeter detects the flow volume of conductive and non-conductive liquids based on ultrasonic technology. With its measurement channel and stainless-steel housing, the ultrasonic flowmeter is suitable for measuring tasks in hygienic environments. The compact and rugged design offers a wide variety of application possibilities, including in those where space restrictions or aggressive media play a role. Installation is quick and easy, and does not require medium calibration. The seal-free, self-draining measuring tube enhances process reliability. Up to two configurable digital and analog outputs as well as the IO-Link interface ensure the right initial situation. The DOSIC® is EHEDG-certified and FDA-compliant.



Applications

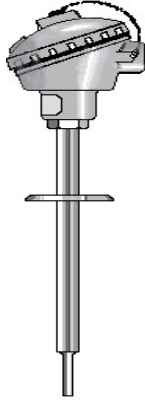
- *Flow measurement in the food and beverage industry
- *Use in CIP systems
- *Flow monitoring in rinsing circuits with demineralized water
- *Monitoring the flow rate in dairies and measuring systems

- *Versatile use for conductive and non-conductive liquids
- *Short installation lengths & a compact design enable installation in applications with limited space
- *Food-safe thanks to rust-free stainless steel and hygienic design
- *Straight measuring tube reduces pressure loss, thus reducing energy costs
- *User-friendly application thanks to rotatable housing and display
- *EHEDG Certified & FDA Compliant
- *Measuring Range 0 to 250 L/M
- *Sizes: 15-25mm
- *IO-Link
- *Up to 93c Process Temperature

RTD TEMPERATURE SENSORS

Hygienic RTD Sensor with Tri Clover Connection

The PSS1000 can be used in applications where there is a need for a sanitary barrier that prevents the product coming in contact with the instrument. The Tri-Clover seal also inhibits any product or chemicals damaging the product. The PS 1000 is also able to handle eith CIP or SIP process.



Features

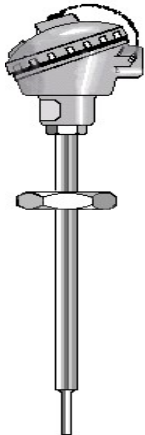
- *Operating Temp:-250 TO 250c
- *Sizes: 1-4"
- *Stainless, Aluminium or Poly Heads

Applications

- *Temperature measurement of beverages, dairy products or pasty food
- *Temperature control in the sugar dissolving tank
- *Temperature control before separator
- *Pasteurisation control
- *Control after the heat exchanger
- *CIP temperature control

Hygienic RTD Sensor with BSM Connection

The PSS1500 can be used in applications where there is a need for a sanitary barrier that prevents the product coming in contact with the instrument. The Tri-Clover seal also inhibits any product or chemicals damaging the product. The PS 1000 is also able to handle eith CIP or SIP process.



Features

- *Operating Temp:-250 TO 250c
- *Sizes: 1-4"
- *Stainless, Aluminium or Poly Heads

Applications

- *Temperature measurement of beverages, dairy products or pasty food
- *Temperature control in the sugar dissolving tank
- *Temperature control before separator
- *Pasteurisation control
- *Control after the heat exchanger
- *CIP temperature control

***Also available in non hygienic version with BSP ends**

HOSE CLAMPS

Super Clamp W4
(Band, Housing & Screw 304 SS)



SIZE	CODE
17-19	SSC-1719
19-21	SSC-1921
21-23	SSC-2123
23-25	SSC-2325
25-27	SSC-2527
27-29	SSC-2729
31-33	SSC-3133
33-35	SSC-3335
35-37	SSC-3537
37-39	SSC-3739
39-41	SSC-3941
41-43	SSC-4143
43-45	SSC-4345
45-47	SSC-4547
47-49	SSC-4749
49-51	SSC-4951
51-53	SSC-5153
53-55	SSC-5355
55-57	SSC-5557
57-59	SSC-5759
59-61	SSC-5961
61-63	SSC-6163
63-65	SSC-6365
65-67	SSC-6567
67-69	SSC-6769
69-71	SSC-6971
71-73	SSC-7173
73-75	SSC-7375
75-77	SSC-7577
77-79	SSC-7779
79-81	SSC-7981
81-83	SSC-8183
83-85	SSC-8385
85-87	SSC-8587
87-89	SSC-8789
89-91	SSC-8991
91-93	SSC-9193
93-95	SSC-9395
95-97	SSC-9597
97-99	SSC-9799

Super Clamp W2
(Band, Housing SS & Screw Mild Steel)



SIZE	CODE
17-19	MSC-1719
19-21	MSC-1921
21-23	MSC-2123
23-25	MSC-2325
25-27	MSC-2527
27-29	MSC-2729
31-33	MSC-3133
33-35	MSC-3335
35-37	MSC-3537
37-39	MSC-3739
39-41	MSC-3941
41-43	MSC-4143
43-45	MSC-4345
45-47	MSC-4547
47-49	MSC-4749
49-51	MSC-4951
51-53	MSC-5153
53-55	MSC-5355
55-57	MSC-5557
57-59	MSC-5759
59-61	MSC-5961
61-63	MSC-6163
63-65	MSC-6365
65-67	MSC-6567
67-69	MSC-6769
69-71	MSC-6971
71-73	MSC-7173
73-75	MSC-7375
75-77	MSC-7577
77-79	MSC-7779
79-81	MSC-7981
81-83	MSC-8183
83-85	MSC-8385
85-87	MSC-8587
87-89	MSC-8789
89-91	MSC-8991
91-93	MSC-9193
93-95	MSC-9395
95-97	MSC-9597
97-99	MSC-9799

HOSE CLAMPS

Worm Drive Clamp W4
(Band, Housing & Screw 304 SS)



SIZE	CODE
13-20	SWC-1320
13-23	SWC-1323
14-27	SWC-1427
17-32	SWC-1732
21-38	SWC-2138
21-45	SWC-2145
27-51	SWC-2751
33-57	SWC-3357
40-64	SWC-4064
46-70	SWC-4670
52-76	SWC-5276
59-83	SWC-5983
65-89	SWC-6589
71-95	SWC-7195
78-102	SWC-7802
84-108	SWC-8408
91-114	SWC-91-14

Worm Drive Clamp W2
(Band, Housing SS & Screw is Mild Steel)



SIZE	CODE
13-20	MSWC-1320
13-23	MSWC-1323
14-27	MSWC-1427
17-32	MSWC-1732
21-38	MSWC-2138
21-45	MSWC-2145
27-51	MSWC-2751
33-57	MSWC-3357
40-64	MSWC-4064
46-70	MSWC-4670
52-76	MSWC-5276
59-83	MSWC-5983
65-89	MSWC-6589
71-95	MSWC-7195
78-102	MSWC-7802
84-108	MSWC-8408
91-114	MSWC-9114

High Pressure Clamps



SIZE	CODE
20mm	SHPC-020
25mm	SHPC-025
32mm	SHPC-032
40mm	SHPC-040
50mm	SHPC-050
65mm	SHPC-065
80mm	SHPC-080
100mm	SHPC-100

Zinc Plated Two Bolt Clamps



SIZE	CODE
22-29mm	D2BC-2229
28-34mm	D2BC-2834
32-40mm	D2BC-3240
39-49mm	D2BC-3949
48-60mm	D2BC-4860
56-72mm	D2BC-5672
60-76mm	D2BC-6076
77-94mm	D2BC-7794

TUBE CLAMPS

Clamp - Tube SS 304



SIZE	CODE
20mm	STC-020
25mm	STC-025
32mm	STC-032
40mm	STC-040
50mm	STC-050
65mm	STC-065
80mm	STC-080
100mm	STC-100

Clamp - Tube SS 316



SIZE	CODE
20mm	STC1-020
25mm	STC1-025
32mm	STC1-032
40mm	STC1-040
50mm	STC1-050
65mm	STC1-065
80mm	STC1-080
100mm	STC1-100

DIXON BOSS STEAM COUPLINGS/CLAMPS

4 Bolt Type Clamp Material: Zinc Plated Iron



SIZE	HOSE OD	CODE	SIZE	HOSE OD	CODE
15mm	23-26.2	Z4BC-968	40mm	52.4-57.2	Z4BC-225
25mm	35.7-39.7	Z4BC-156	40mm	55.6-60.3	Z4BC-BU24
25mm	38.9-43.7	Z4BC-BU14	40mm	60.3-65.1	Z4BC-B24
25mm	42.9-49.2	Z4BC-B14	40mm	65.1-69.9	Z4BC-B25
25mm	49.2-54.0	Z4BC-B15	50mm	57.2-63.5	Z4BC-250
32mm	38.1-45.2	Z4BC-BU18	50mm	59.5-64.3	Z4BC-BU28
32mm	42.9-47.6	Z4BC-187	50mm	63.5-69.9	Z4BC-275
32mm	45.2-53.2	Z4BC-BU19	50mm	63.5-70.6	Z4BC-BU29
32mm	47.6-52.4	Z4BC-206	50mm	69.9-77.8	Z4BC-B29
32mm	54.0-60.3	Z4BC-B19	50mm	78.6-87.3	Z4BC-B30
40mm	46.0-50.8	Z4BC-BU22	65mm	77.8-88.9	Z4BC-350
40mm	50.8-54.0	Z4BC-B22	65mm	78.6-87.3	Z4BC-BU34
40mm	50.8-56.4	Z4BC-212	65mm	88.9-100.0	Z4BC-B34

Claw Clamp 2 & 4 Bolt Material: Stainless



SIZE	HOSE OD	Stainless	Brass	Zinc
		CODE	CODE	CODE
6mm	14.3 to 16.7	N/A	N/A	Z2BC-BD
15mm	20.6 to 23.8	N/A	N/A	Z2BC-DD
15mm	23.8 to 27.0	S2BC-RB4	B2BC-BB4	Z2BC-B4
15mm	27.0 to 30.2	S2BC-RB5	N/A	Z2BC-B5
20mm	30.2 to 33.3	S2BC-RBU9	B2BC-BBU9	Z2BC-BU9
20mm	33.3 to 38.1	S2BC-RB9	N/A	Z2BC-B9
20mm	38.1 to 42.9	N/A	N/A	Z2BC-B10

Steel Bar Male Stem (Hosetail x Thread)



SIZE	NPT	BSP
	CODE	CODE
15 x 15mm	BSMS1	BSMS1A
15 x 20mm	BSMS8x12	BSMS8x12A
20 x 12mm	BSMS12	BSMS12A
20 x 20mm	BSMS6	BSMS6A
20 x 25mm	BSMS12x16	BSMS12x16A
25 x 20mm	BSMS16x12	BSMS16x12A
25 x 25mm	MS11	MS11A

DIXON BOSS GROUND JOINTS

Ground Joint Complete



	Stainless	Brass	Plate Iron
SIZE	CODE	CODE	CODE
15mm	SGJ-015	BGJ-015	PIGJ-015
20mm	SGJ-020	BGJ-020	PIGJ-020
25mm	SGJ-025	BGJ-025	PIGJ-025
32mm	SGJ-032	BGJ-032	PIGJ-032
38mm	SGJ-038	BGJ-038	PIGJ-038

Ground Joint-Female Stem



	Stainless	Brass	Plate Iron
SIZE	CODE	CODE	CODE
15mm	BSFS-015	BBFS-015	BPIFS-015
20mm	BSFS-020	BBFS-020	BPIFS-020
25mm	BSFS-025	BBFS-025	BPIFS-020
32mm	BSFS-032	BBFS-032	BPIFS-025
38mm	BSFS-038	BBFS-038	BPIFS-038

Ground Joint Part-Wing Nut



	Stainless	Brass	Plate Iron
SIZE	CODE	CODE	CODE
15mm	BSWN-015	BBWN-015	BPIWN-015
20mm	BSWN-020	BBWN-020	BPIWN-020
25mm	BSWN-025	BBWN-025	BPIWN-025
32mm	BSWN-032	BBWN-032	BPIWN-032
38mm	BSWN-038	BBWN-038	BPIWN-038

Ground Joint Part-Female Spud



	Stainless	Brass	Plate Iron
SIZE	CODE	CODE	CODE
15mm	DBSFS-015	DBBFS-015	DBPIFS-015
20mm	DBSFS-020	DBBFS-020	DBPIFS-020
25mm	DBSFS-025	DBBFS-025	DBPIFS-025
32mm	DBSFS-032	DBBFS-032	DBPIFS-032
38mm	DBSFS-038	DBBFS-038	DBPIFS-038

Ground Joint Part-Male Spud



	Stainless	Brass	Plate Iron
SIZE	CODE	CODE	CODE
15mm	DBSMS-015	BBMS-015	DBPIMS-015
20mm	DBSMS-020	BBSMS-020	DBPIMS-020
25mm	DBSMS-025	BBSMS-025	BPBIMS-025
32mm	DBSMS-032	BBSMS-032	BPBIMS-032
38mm	DBSMS-038	BBMS-038	BPBIMS-038

Ground Joint Part-Double Spud



	Stainless	Brass	Plate Iron
SIZE	CODE	CODE	CODE
15mm	DBSDS-015	DBBDS-015	DBPIDS-015
20mm	DBSDS-020	DBBDS-020	DBPIDS-020
25mm	DBSDS-025	DBBDS-025	DBPIDS-025
32mm	DBSDS-032	DBBDS-032	DBPIDS-032
38mm	DBSDS-038	DBBDS-038	DBPIDS-038

MIYAWAKI BALL FLOAT STEAM TRAPS

Applications:

For discharging the drain from steam main lines and small heat exchanger applications. Ball Float Steam Traps discharge the condensate near the saturation temperature.

GC 20-3-Screwed

- *Stainless Steel Body
- *Free Float
- *PTFE Gasket
- *BSP Screwed
- *Up to 220c
- *900 kg/h Discharge
- *43 PSI (3 Bar)



SIZE	CODE
15mm	GC20-3-015
20mm	GC20-3-020
25mm	GC20-3-025

GC 20-8-Screwed

- *Stainless Steel Body
- *Free Float
- *PTFE Gasket
- *BSP Screwed
- *Up to 220c
- *900 kg/h Discharge
- *116 PSI (8 Bar)



SIZE	CODE
15mm	GC20-8-015
20mm	GC20-8-020
25mm	GC20-8-025

GC 20-21-Screwed

- *Stainless Steel Body
- *Free Float
- *PTFE Gasket
- *BSP Screwed
- *Up to 220c
- *900 kg/h Discharge
- *305 PSI (21 Bar)



SIZE	CODE
15mm	GC20-21-015
20mm	GC20-21-020
25mm	GC20-21-025

GC20-A3

- *Stainless Steel Body
- *Free Float
- *PTFE Gasket
- *ANSI Flanged
- *Up to 220c
- *900 kg/h Discharge
- *43 PSI (3 Bar)



SIZE	CODE
15mm	GC20A3-15
20mm	GC20A3-20
25mm	GC20A3-25

MIYAWAKI THERMODYNAMIC STEAM TRAPS

Thermodynamic disc steam traps discharge the condensate near the saturation temperature. The traps may operate until a back pressure of 80% of the inlet pressure, but for smooth operation it is recommended that the back pressure does not exceed 50% of the inlet pressure.

SU2N

- *Stainless Steel Body
- *Up to 425c
- *928 PSI (64 Bar)
- *800 kg/h Discharge
- *Screwed BSP



SIZE	CODE
15mm	SU2N-015
20mm	SU2N-020
25mm	SU2N-025

S31

- *Ductile Iron Body
- *Up to 220c
- *305 PSI (21 Bar)
- *2,500 kg/h Discharge
- *Screwed BSP



SIZE	CODE
15mm	SC31-015
20mm	SC31-020
25mm	SC31-025
40mm	SC31-040
50mm	SC31-050

S55

- *A 105 Forged Steel Body
- *Up to 425c
- *667 PSI (46 Bar)
- *600 kg/h Discharge
- *Screwed BSP



SIZE	CODE
15mm	S55-015
20mm	S55-020
25mm	S55-025

S62

- *A 105 Forged Steel Body
- *Up to 425c
- *667 PSI (64 Bar)
- *600 kg/h Discharge
- *Screwed BSP



SIZE	CODE
15mm	S61-015
20mm	S61-020
25mm	S61-025

MIYAWAKI THERMOSTATIC STEAM TRAPS

Temperature Control Steam Traps are bimetallic steam traps which do not follow the steam saturation curve. The discharge temperature can be adjusted manually, which allows to adopt these steam traps to a wide range of applications, where optional undercooling is possible and where optional undercooling is possible and where sensible heat savings and steam reduction are desirable.

TB Series

TB1N

- *Carbon Steel Body
- *Up to 350c
- *232 PSI (16 Bar)
- *300 kg/h Discharge
- *Screwed BSP



SIZE	CODE
6mm	TB1N-06
8mm	TB1N-08
510mm	TB1N-010

TBC2B

- *Stainless Steel Body
- *Up to 220c
- *87 PSI (6 Bar)
- *400 kg/h Discharge
- *Screwed BSP



SIZE	CODE
8mm	TBC2B-06
10mm	TBC2B-08
15mm	TBC2B-010

TB7N

- *A 105 Forged Steel Body
- *Up to 350c
- *304 PSI (21 Bar)
- *450 kg/h Discharge
- *Screwed BSP



SIZE	CODE
15mm	TB7N-015
20mm	TB7N-020
25mm	TB7N-025

TB9N

- *A 105 Forged Steel Body
- *Up to 350c
- *232 PSI (16 Bar)
- *900 kg/h Discharge
- *Screwed BSP



SIZE	CODE
15mm	TB9N-015
20mm	TB9N-020
25mm	TB6N-025

TB52

- *A 105 Forged Steel Body
- *Up to 475c
- *928 PSI (64 Bar)
- *800 kg/h Discharge
- *ANSI Flanged



SIZE	CODE
15mm	TB52-015
20mm	TB52-020
25mm	TB52-025

TBH71

- *Cast Steel Body
- *Up to 550c
- *2900 PSI (200 Bar)
- *700 kg/h Discharge
- *Screwed BSP



SIZE	CODE
15mm	TBH71-015
20mm	TBH71-020
25mm	TBH71-025

MIYAWAKI STEAM VALVES

CV3R Check Valve

- *Stainless Steel Body
- *Up to 220c
- *305 PSI (21 Bar)
- *Screwed BSP/ NPT Connection



SIZE	CODE
15mm	CV3R-015
20mm	CV3R-020
25mm	CV3R-025
40mm	CV3R-040
50mm	CV3R-050

RE1 Direct Acting Pressure Reducing Valve

- *Brass Body
- *Up to 204c
- *Primary Pressure 30-230 PSI (2-16 Bar)
- *Secondary Pressure 10-145 PSI (0.5-10 Bar)
- *Screwed BSP/ NPT Connection
- *30-1 Reducing Pressure
- *Good for use with Steam or Air



SIZE	CODE
15mm	RE1-015
20mm	RE1-020
25mm	RE1-025

REC1F Direct Acting Pressure Reducing Valve

- *Stainless Steel Body
- *Up to 204c
- *Primary Pressure 30-230 PSI (2-16 Bar)
- *Secondary Pressure 10-145 PSI (0.5-10 Bar)
- *Screwed BSP/ NPT Connection
- *10-1 Reducing Pressure
- *Good for use with Steam or Air



SIZE	CODE
15mm	REC1S-015
20mm	REC1S-020
25mm	REC1S-025

REC1F Direct Acting Pressure Reducing Valve

- *Stainless Steel Body
- *Up to 204c
- *Primary Pressure 30-230 PSI (2-16 Bar)
- *Secondary Pressure 10-145 PSI (0.5-10 Bar)
- *ANSI Flanged Connection
- *10-1 Reducing Pressure
- *Good for use with Steam or Air



SIZE	CODE
15mm	REC1F-015
20mm	REC1F-020
25mm	REC1F-025

STEAM RATED GLOBE VALVES

Utam Steam Globe Valve

- *Bronze Body
- *Stainless Seat
- *Bronze Bonnet
- *Stainless Spindle
- *-20 to 225c
- *1,975 PSI (20 Bar)
- *BSPT Screwed



SIZE	CODE
15mm	BSTGV-015
20mm	BSTGV-020
25mm	BSTGV-025
32mm	BSTGV-032
40mm	BSTGV-040
50mm	BSTGV-050

Velan Class 800 Gate Valve

- *Carbon Steel Body
- *Hard Face Seat
- *Bolted Bonnet
- *Graphite Gasket
- *-20 to 380c
- *1,975 PSI (136 Bar)
- *NPT Screwed



SIZE	CODE
15mm	VCC8GV-015
20mm	VCC8GV-020
25mm	VCC8GV-025
32mm	VCC8GV-032
40mm	VCC8GV-040
50mm	VCC8GV-050

Utam Cast Steel Bellow Seal Globe Valve

- *Cast Steel Body
- *Hard Faced Seats
- *Stainless Stem
- *-40 to 230C
- *232 PSI (16 Bar)
- *ANSI Flanged



SIZE	CODE
20mm	CSBSGV-020
25mm	CSBSGV-025
32mm	CSBSGV-032
40mm	CSBSGV-040
50mm	CSBSGV-050
65mm	CSBSGV-065
80mm	CSBSGV-080
100mm	CSBSGV-100
150mm	CSBSGV-150
200mm	CSBSGV-200

SAFELOK AUTO LOCKING CAMLOCKS

Saflok is a locking camlock fitting created to deal with high-value and high-risk liquid chemicals. A modified camlock fitting that features an automatic locking system built into the arms. This enables it to be used just like a standard camlock but with the added security of it locking into place so it cannot be accidentally opened once closed.



	A Type	B Type	C Type	D Type	E Type	F Type	Dust Cap	Dust Plug
SIZE	CODE	CODE	CODE	CODE	CODE	CODE	CODE	CODE
15mm	SLC-A015	SLC-B015	SLC-C015	SLC-D015	SLC-E015	SLC-F015	SLDC-015	SLDP-015
20mm	SLC-A020	SLC-B020	SLC-C020	SLC-D020	SLC-E020	SLC-F020	SLDC-020	SLDP-020
25mm	SLC-A025	SLC-B025	SLC-C025	SLC-D025	SLC-E025	SLC-F025	SLDC-025	SLDP-025
32mm	SLC-A032	SLC-B032	SLC-C032	SLC-D032	SLC-E032	SLC-F032	SLDC-032	SLDP-032
40mm	SLC-A040	SLC-B040	SLC-C040	SLC-D040	SLC-E040	SLC-F040	SLDC-040	SLDP-040
50mm	SLC-A050	SLC-B050	SLC-C050	SLC-D050	SLC-E050	SLC-F050	SLDC-050	SLDP-050
65mm	SLC-A066	SLC-B065	SLC-C065	SLC-D065	SLC-E065	SLC-F065	SLDC-065	SLDP-065
80mm	SLC-A080	SLC-B080	SLC-C080	SLC-D080	SLC-E080	SLC-F080	SLDC-080	SLDP-080
100mm	SLC-A100	SLC-B100	SLC-C100	SLC-D100	SLC-E100	SLC-F100	SLDC-100	SLDP-100
150mm	SLC-A150	SLC-B150	SLC-C150	SLC-D150	SLC-E150	SLC-F150	SLDC-150	SLDP-150

STAINLESS & ALUMINIUM CAMLOCKS



Stainless

	A Type	B Type	C Type	D Type	E Type	F Type	Dust Cap	Dust Plug
SIZE	CODE	CODE	CODE	CODE	CODE	CODE	CODE	CODE
15mm	SAC-015	SBC-015	SCC-015	SDC-015	SEC-015	SFC-015	DCS-015	SDP-015
20mm	SAC-020	SBC-020	SCC-020	SDC-020	SEC-020	SFC-020	DCS-020	SDP-020
25mm	SAC-025	SBC-025	SCC-025	SDC-025	SEC-025	SFC-025	DCS-025	SDP-025
32mm	SAC-032	SBC-032	SCC-032	SDC-032	SEC-032	SFC-032	DCS-032	SDP-032
40mm	SAC-040	SBC-040	SCC-040	SDC-040	SEC-040	SFC-040	DCS-040	SDP-040
50mm	SAC-050	SBC-050	SCC-050	SDC-050	SEC-050	SFC-050	DCS-050	SDP-050
65mm	SAC-065	SBC-065	SCC-065	SDC-065	SEC-065	SFC-065	DCS-065	SDP-065
80mm	SAC-080	SBC-080	SCC-080	SDC-080	SEC-080	SFC-080	DCS-080	SDP-080
100mm	SAC-100	SBC-100	SCC-100	SDC-100	SEC-100	SFC-100	DCS-100	SDP-100
150mm	SAC-150	SBC-150	SCC-150	SDC-150	SEC-150	SFC-150	DCS-150	SDP-150

Aluminium

	A Type	B Type	C Type	D Type	E Type	F Type	Dust Cap	Dust Plug
SIZE	CODE	CODE	CODE	CODE	CODE	CODE	CODE	CODE
15mm	AAC-015	ABC-015	ACC-015	ADC-015	AEC-015	AFC-015	DCA-015	ADP-015
20mm	AAC-020	ABC-020	ACC-020	ADC-020	AEC-020	AFC-020	DCA-020	ADP-020
25mm	AAC-025	ABC-025	ACC-025	ADC-025	AEC-025	AFC-025	DCA-025	ADP-025
32mm	AAC-032	ABC-032	ACC-032	ADC-032	AEC-032	AFC-032	DCA-032	ADP-032
40mm	AAC-040	ABC-040	ACC-040	ADC-040	AEC-040	AFC-040	DCA-040	ADP-040
50mm	AAC-050	ABC-050	ACC-050	ADC-050	AEC-050	AFC-050	DCA-050	ADP-050
65mm	AAC-065	ABC-065	ACC-065	ADC-065	AEC-065	AFC-065	DCA-065	ADP-065
80mm	AAC-080	ABC-080	ACC-080	ADC-080	AEC-080	AFC-080	DCA-080	ADP-080
100mm	AAC-100	ABC-100	ACC-100	ADC-100	AEC-100	AFC-100	DCA-100	ADP-100
150mm	AAC-150	ABC-150	ACC-150	ADC-150	AEC-150	AFC-150	DCA-150	ADP-150

WASHDOWN EQUIPMENT

Superklean Duraflow Mini (SK-MWG)



- *Temperature: 93c Max
- *Inlet: 1/2" BSP
- *Body: Stainless Steel
- *Max Pressure: 34 Bar
- *Flow Rate: 100 L/min at 18 Bar

Superklean Duraflow Lockable (SK-LG)



- *Temperature: 93c Max
- *Inlet: 1/2" BSP
- *Body: Stainless Steel
- *Max Pressure: 34 Bar
- *Flow Rate: 100 L/min at 18 Bar
- *Lockable Trigger

RB 65 Heavy Duty One Piece (IM-WG1)



- *Temperature: 90c Max
- *Inlet: 1/2" Inlet
- *Max Pressure: 24 Bar
- *Chrome Brass Body
- *Stainless Spindle
- *Flow Rate: 100 L/min at 18 Bar

BSP SWIVEL HOSE TAIL

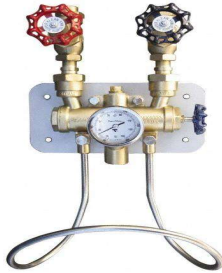


Hosetail x 12mm BSP

SIZE	CODE
12 x 12mm	SHTS-012
12 x 20mm	SHTS-020
12 x 25mm	SHTS-025

SUPERKLEAN MIXING UNITS

Superklean Bronze Steam & Cold Water Safety Mixer (SKBM-8000)



The DURAMIX 8000B unit operates under a wide range of steam and water pressures without changing internal components. In fact, it is one of the only steam and cold water mixing units in the industry with the ability to operate with as little as 30 PSI water pressure. The Duramix also features a safety mechanism that shuts off steam when the water pressure hits 30 PSI.

Parts & Materials

*Bronze Body *Bronze Check Valve *Bronze Globe Valve
*Temperature Gauge *Hose Rack

Superklean Stainless Steel Steam & Cold Water Safety Mixer (SKSM-8000)



The DURAMIX 8000S unit operates under a wide range of steam and water pressures without changing internal components. In fact, it is one of the only steam and cold water mixing units in the industry with the ability to operate with as little as 30 PSI water pressure. The Duramix also features a safety mechanism that shuts off steam when the water pressure hits 30 PSI.

Parts & Materials

*Stainless Body *Stainless Check Valve *Stainless Globe Valves
*Temperature Gauge *Hose Rack

Superklean Brass Hot & Cold Water Mixer (SKBM-3600)



The DURAMIX 3600B unit is a hot & cold water mixing unit was specifically designed for thoroughly blending hot and cold water instantly to achieve the required temperature output. The unit uses "Y" style body mechanics with lift check valves and ball joint unions for superior flexibility during installation.

Parts & Materials

*Brass Body *Brass Check Valve *Brass Globe Valves
*Temperature Gauge *Hose Rack

FIKE RUPTURE DISCS

Safeguard Your PRVs & Product with Fike® Precision Engineered Rupture Discs

If a pressure-related event occurs in your production facility, what's the cost of an hour of downtime? A day? A week? Gain ultimate protection from pressure-related downtime, damaged equipment and, most importantly, injuries with Fike's premium rupture discs.

Pressure or safety relief valves protect many processes and ultimately your product. While essential, PRVs can be costly to maintain and expensive to replace. You can safeguard your high-cost PRVs and greatly extend their service life with affordable rupture discs from Fike. PRVs can also be a major source of process media emissions. By installing Fike rupture/bursting discs upstream of your PRV, you can not only protect the valve, but greatly decrease emissions.



Fike Rupture Discs are designed to provide a leak-tight seal within a pipe or vessel until the internal pressure rises to a predetermined level. At that point, the disc bursts—within one or two milliseconds of an overpressure event—preventing damage to the equipment. Furthermore, Fike's world-class manufacturing process offers superior performance, validation testing & innovation. Fike Burst Indicators are used to provide instantaneous notification of a rupture disc activation. They can activate alarms, bells, remote annunciators, or interface with process control systems, so that appropriate safety measures can be taken.

Common Causes for Overpressure:

- *Blocked discharge
- *Blocked discharge
- *Chemical runaway reaction
- *External fire or loss of coolant
- *Loss of purge gas

Lack of Safeguarding Can Cause:

- *Mechanical damage
- *Loss of product
- *Personnel injuries
- *Production downtime
- *Environmental damage

STAINLESS TUBE FITTINGS

Tube Nipple



SIZE	CODE
25mm	NAT -025
32mm	NAT -032
40mm	NAT -040
50mm	NAT -050
65mm	NAT -065
80mm	NAT -080

Equal Tee



SIZE	CODE
15mm	STET-015
20mm	STET-020
25mm	STET-025
32mm	STET-032
40mm	STET-040
50mm	STET-050
65mm	STET-065
80mm	STET-080
100mm	STET-100
150mm	STET-150

Tee Pulled



SIZE	CODE
25mm	STPT-025
32mm	STPT-032
40mm	STPT-040
50mm	STPT-050
65mm	STPT-065
80mm	STPT-080
100mm	STPT-100

Y Piece



SIZE	CODE
25mm	SYPT-025
40mm	SYPT-040
50mm	SYPT-050
65mm	SYPT-065
80mm	SYPT-080
100mm	SYPT-100

Elbows 90° (Polished)



SIZE	CODE
15mm	STEP-015
20mm	STEP-020
25mm	STEP-025
32mm	STEP-032
40mm	STEP-040
50mm	STEP-050
65mm	STEP-065
80mm	STEP-080
100mm	STEP-100

Elbows 90° (Un Polished)



SIZE	CODE
15mm	STEUP-015
20mm	STEUP-020
25mm	STEUP-025
32mm	STEUP-032
40mm	STEUP-040
50mm	STEUP-050
65mm	STEUP-065
80mm	STEUP-080
100mm	STEUP-100

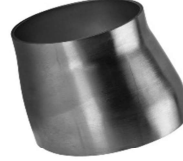
STAINLESS TUBE FITTINGS

Concentric Reducers



SIZE	CODE
15-10mm	STCR-1510
20-08mm	STCR-2008
20-10mm	STCR-2010
20-15mm	STCR-2015
25-15mm	STCR-2515
25-20mm	STCR-2520
32-20mm	STCR-3220
32-25mm	STCR-3225
40-25mm	STCR-4025
40-32mm	STCR-4032
50-40mm	STCR-5040
50-20mm	STCR-5020
50-25mm	STCR-5025
50-32mm	STCR-5032
50-40mm	STCR-5040
65-25mm	STCR-6525
65-40mm	STCR-6540
65-50mm	STCR-6550
80-25mm	STCR-8025
80-40mm	STCR-8040
80-50mm	STCR-8050
80-65mm	STCR-8065
100-25mm	STCR-10025
100-40mm	STCR-10040
100-50mm	STCR-10050
100-65mm	STCR-10065

Eccentric Reducers



SIZE	CODE
15-10mm	STER-1510
20-08mm	STER-2008
20-10mm	STER-2010
20-15mm	STER-2015
25-15mm	STER-2515
25-20mm	STER-2520
32-20mm	STER-3220
32-25mm	STER-3225
40-25mm	STER-4025
40-32mm	STER-4032
50-40mm	STER-5040
50-20mm	STER-5020
50-25mm	STER-5025
50-32mm	STER-5032
50-40mm	STER-5040
65-25mm	STER-6525
65-40mm	STER-6540
65-50mm	STER-6550
80-25mm	STER-8025
80-40mm	STER-8040
80-50mm	STER-8050
80-65mm	STER-8065
100-25mm	STER-10025
100-40mm	STER-10040
100-50mm	STER-10050
100-65mm	STER-10065

Tube 180° Bend



SIZE	CODE
25mm	T180 -025
32mm	T180 -032
40mm	T180 -040
50mm	T180 -050
65mm	T180 -065
80mm	T180 -080
100mm	T180-100
150mm	T180-150

Reducing Tee



SIZE	CODE
15mm	STRT-015
20mm	STRT-020
25mm	STRT-025
32mm	STRT-032
40mm	STRT-040
50mm	STRT-050
65mm	STRT-065
80mm	STRT-080
100mm	STRT-100

STAINLESS TUBE FLANGES

ANSI 150 (316 Stainless Steel)



SIZE	CODE
25mm	STF1-AF025
40mm	STF1-AF040
50mm	STF1-AF050
65mm	STF1-AF065
80mm	STF1-AF080
100mm	STF1-AF100

ANSI 150 (304 Stainless Steel)



SIZE	CODE
25mm	STFA-AF025
40mm	STFA-AF040
50mm	STFA-AF050
65mm	STFA-AF065
80mm	STFA-AF080
100mm	STFA-AF100

Table E (316 Stainless Steel)



SIZE	CODE
50mm	STF1-TE050
65mm	STF1-TE065
80mm	STF1-TE080
100mm	STF1-TE100
150mm	STF1-TE150
200mm	STF1-TE200

Table E (304 Stainless Steel)



SIZE	CODE
50mm	STF-E050
65mm	STF-E065
80mm	STF-E080
100mm	STF-E100
150mm	STF-E150
200mm	STF-E200

SKF LUBRICATION SYSTEMS

Like any mechanical system, moving parts in a food and beverage plant need proper lubrication to function optimally. Contamination, moisture, high temperatures & humidity are all threats to bearing, chain and gear service life. Failure to properly lubricate each lubrication point on every machine can have a negative impact on schedules, maintenance costs and machine performance. Poor lubrication causes about 36% of all premature bearing failures, but with the right lubrication solution you can create new opportunities to increase uptime and productivity.

The right lubrication solution for your needs

Automatic lubrication systems supply the correct amount of grease at the best time to lubricate – while the bearing is in motion. Frequent lubrication maintains the proper lubricant film to reduce wear, as well as purges the pins and bushings of contaminants.

SKF lubrication solutions support all moving parts in your machines. SKF offers a complete selection of high-performance progressive, single-line, dual-line and chain lubrication systems for the food & beverage industry, which are tailored to the customer's specific requirements.



NFS has the service, equipment & expertise needed to keep your production lines running smoothly.

Our service includes:

*System Design *Installation and on site service *Staff Training *Maintenance programs

EXPANSION JOINTS

Expansion joints have the ability to protect your equipment against a variety of stressors while also being, low maintenance and durable for maximum efficiency. NFS stocks in Rubber, PTFE & stainless braid.

Rubber Expansion Joint

*EPDM/BUNA Bellow

*-20 to +110c

*Up to 15 Bar at 80c

*Up to 130c



Zinc Plated Flanges

	Table E	ANSI	Din
SIZE	CODE	CODE	CODE
25mm	REJTEC-025	REJAC-025	REJDC-025
32mm	REJTEC-032	REJAC-032	REJDC-032
38mm	REJTEC-038	REJAC-038	REJDC-038
51mm	REJTEC-051	REJAC-051	REJDC-051
63mm	REJTEC-063	REJAC-063	REJDC-063
76mm	REJTEC-076	REJAC-076	REJDC-076
102mm	REJTEC-102	REJAC-102	REJDC-102
127mm	REJTEC-127	REJAC-127	REJDC-127
152mm	REJTEC-152	REJAC-152	REJDC-152
200mm	REJTEC-200	REJAC-200	REJDC-200
250mm	REJTEC-250	REJAC-250	REJDC-250
300mm	REJTEC-300	REJAC-300	REJDC-300
350mm	REJTEC-350	REJAC-350	REJDC-350
400mm	REJTEC-400	REJAC-400	REJDC-400

Stainless Flanges

	Table E	ANSI	Din
SIZE	CODE	CODE	CODE
25mm	REJTES-025	REJAS-025	REJDS-025
32mm	REJTES-032	REJAS-032	REJDS-032
38mm	REJTES-038	REJAS-038	REJDS-038
51mm	REJTES-051	REJAS-051	REJDS-051
63mm	REJTES-063	REJAS-063	REJDS-063
76mm	REJTES-076	REJAS-076	REJDS-076
102mm	REJTES-102	REJAS-102	REJDS-102
127mm	REJTES-127	REJAS-127	REJDS-127
152mm	REJTES-152	REJAS-152	REJDS-152
200mm	REJTES-200	REJAS-200	REJDS-200
250mm	REJTES-250	REJAS-250	REJDS-250
300mm	REJTES-300	REJAS-300	REJDS-300
350mm	REJTES-350	REJAS-350	REJDS-350
400mm	REJTES-400	REJAS-400	REJDS-400

NOVUS GASKETS

Uniflon is a comprehensive range of modified and expanded PTFE sealing products designed for applications where chemical resistance is paramount or where food safety is a requirement. It is the latest generation of filled biaxially oriented PTFE sealing materials combining outstanding chemical resistance with excellent sealing performance. The enhanced capabilities of our manufacturing facility means that one piece gaskets are available up to 2 000 mm diameter.

Features

- *Outstanding chemical resistance
- *Extremely low gas permeability
- *Excellent sealing performance even at low seating stress
- *Conforms with FDA regulations Environmentally friendly
- *Wide service temperature range (-196°C to 260°C)
- *Improved creep resistant properties

Uniflon 50



- *Colour: Blue
- *Thickness: 0.75 mm to 6.0 mm
- *Standard Sheet Sizes: 2.0 m x 1.5 m

*Features: Excellent chemical resistance. Extremely low gas permeability, even at low bolt loads. Conforms with FDA 21 CFR 177.1550 regulations.

*Description: Specially designed for use in low bolt loaded constructions: Therefore extremely suitable for glass, ceramics, & plastic lined or distorted flanges.

Uniflon 51



- *Colour: Pink or Fawn
- *Thickness: 0.75 mm to 6.0 mm
- *Standard Sheet Sizes: 2.0 m x 1.5 m
- *Features: Excellent chemical resistance Extremely reduced creep properties compared to conventional PTFE.

*Description: A general purpose grade for sealing applications across the whole pH- range. Particularly suitable for use with strong acids (except hydrofluoric acid) & alkalis. Other applications include solvents, fuels, water, steam and chlorine.

NOVUS GASKETS

Uniflon 53



- ***Colour:** White
- ***Thickness:** 0.75 mm to 6.0 mm
- ***Standard Sheet Sizes:** 2.0 m x 1.5 m

***Features:** Excellent chemical resistance Extremely reduced creep properties compared to conventional PTFE.

***Description:** A general purpose grade for sealing applications across the whole pH- range. Particularly suitable for use with strong acids (except hydrofluoric acid) & alkalis. Other applications include solvents, fuels, water, steam and chlorine.

Uniflon 58



- ***Colour:** White
- ***Thickness:** 1.5 mm to 3.2 mm (other thicknesses available)
- ***Standard Sheet Sizes:** 2.0 m x 1.5 m

***Features:** Specifically designed for use in low bolt loaded irregular flanges. Typical flanges include glass lined, ceramic, plastic coated or uneven and badly distorted flanges. It is suitable for sealing all chemicals across the pH range with the exception of molten alkali metals and fluorine gas.

***Description:** A superior performance PTFE based material with highly conformable properties on the surface layers with a biaxially orientated pure PTFE core. Conforms with FDA 21 CFR 177.1550 regulations.

Novus 20



- Product Type:** Compressed Fibre - 5G™ Range
- Colour:** Orange
- Thickness range:** 0.25mm to 6.0mm
- Standard roll sizes:** Up to a maximum size of 6.0m x 2.0m

Novus 20 is a general purpose material suitable for use in a wide range of applications, including hot and cold water, steam, oils, fuels, gases and a wide range of general chemicals.

NOVATEX FOODGRADE SEALING

Novatex Joint Sealant looks and feels different from other joint sealant products. It is smooth and flexible with an exceptionally smooth texture and density. Under the surface is a microscopic structure that makes this remarkable material one of the strongest, most versatile sealants available.



Features

- *100% expanded PTFE
- *Unaffected by common chemicals PH range 0-14
- *Non-contaminating, non-toxic
- *Will not age or harden while in service
- *Extremely strong, pressure range from full vacuum to 3000 PSI
- *Temperature range from -196°C to +260C
- *FDA suitable (FDA 21 CRR177.1550)

Virgin Grade PTFE Virgin grade PTFE is made from virgin PTFE resin. This grade comes in sheets, rods and tubes. Typical applications include seals, gaskets or structural components where temperature or chemical resistance is essential. Used especially for application requiring high purity, non-contamination and exceptional dielectric properties.

