



**NATIONAL  
FLUID  
SYSTEMS**



**Brewers, Distillers & Cidermakers Catalogue 2019/20**

# CONTENTS

Sanitary Stainless Hose Tails	Page 4
Sanitary Fittings	Page 6-12
Sanitary Seals/Gaskets	Page 13
Stainless BSP Fittings	Page 14
Stainless Food Grade Tube	Page 17
Washdown Equipment	Page 19
Valves	Page 21
Hose Clamps	Page 31
Hose	Page 33
Hygienic Pumps	Page 36
Compression Fittings	Page 42
Flow Meters	Page 45
Hose Reels	Page 46
Manway Tank Seals	Page 47
Camlocks	Page 48
Tank Cleaning Equipment	Page 50
Heat Exchangers	Page 54
Water/Waste Pumps	Page 55
Pressure Gauges & Instrumentation	Page 59
Sanitary Filters & Strainers	Page 65

## ABOUT NFS

National Fluid Systems is a dedicated industrial goods supplier to Australian Food & Beverage Industry. We source products both locally & internationally from some of the industries biggest & most trusted brands. Whenever possible NFS Endeavours to use Australian made products.

NFS boasts over 20 years experience in fluid handling solutions, so whatever your application you can be sure NFS can come up with the perfect solution for you at a competitive price whilst reducing your downtime.

### NFS is an Authorised Distributor for the following brands

- \*Trelleborg Premium Rubber Food Hose
- \*Merlett PVC Hose
- \*Inoxpa Sanitary Pumps & Fittings
- \*Ebara Pumps
- \*Chadstone Sanitary Valves & Fittings
- \*Super Klean Washdown Equipment
- \*Sick Instrumentation
- \*Burkert Control Valves
- \*Breconcherry Tank Cleaners
- \*Hylok Compression Fittings
- \*Alfagomma Rubber
- \*Ashcroft Instruments
- \*GPI & Flomec Flow Solutions
- \*Yokogawa Sanitary Flowmeters
- \*Versamatic Diaphragm Pumps
- \*Recoila Hose Reels
- \*Packo Sanitary Pump
- \*Utam Steam Valves
- \*Salvatore Robuschi Waste Pumps



## ENGINEERING & FABRICATION

NFS provides a full-service engineering, design, project management, construction management and a host of other services to manufacturers and producers in the Chemical, Food and Beverage Industries. Each of our services are comprehensive in nature. We take a targeted and focused approach to every project we take on, you can rest assured that you're getting the best service possible.

Our team of master craftsmen have many years of experience in the installation of process systems and quality stainless steel pipework. We install both basic and complicated quality pipework modifications to complete any process system, often in Hygienic or ATEX environments.



### Our work includes:

- \*Product & CIP pipework
- \*Pump, Tanks & Mixing System Design
- \*CIP (Clean In Place) System Design & Supply
- \*Bottling Machines Commission & Supply
- \*Valve Manifolds & Skids
- \*Decanters & Clarifiers for separation
- \*Fermentation / Maturation
- \*Alcohol Spirit Storage & Handling
- \*Sanitary Flowplate Design & Fabrication
- \*Steam & Condensate Services
- \*Brew House Design & Supply

# STAINLESS SANITARY CRIMP HOSETAILS

## BSM RJT MALE HOSE TAIL



SIZE	CODE
25mm	SMHT-025
40mm	SMHT-040
50mm	SMHT-050
65mm	SMHT-065
80mm	SMHT-080
100mm	SMHT-100

## BSM RJT FEMALE HOSE TAIL



SIZE	CODE
25mm	SFHT-025
40mm	SFHT-040
50mm	SFHT-050
65mm	SFHT-065
80mm	SFHT-080
100mm	SFHT-100

## TRI CLOVER HOSE TAIL



SIZE	CODE
25mm	TCHT-025
40mm	TCHT-040
50mm	TCHT-050
65mm	TCHT-065
80mm	TCHT-080
100mm	TCHT-100

## BUTT WELD HOSE TAIL



SIZE	CODE
25mm	SBWHT-025
40mm	SBWHT-040
50mm	SBWHT-050
65mm	SBWHT-065
80mm	SBWHT-080
100mm	SBWHT-100

## DIN MALE HOSE TAIL



SIZE	CODE
25mm	DMHT-025
40mm	DMHT-040
50mm	DMHT-050
65mm	DMHT-065
80mm	DMHT-080
100mm	DMHT-100

## DIN FEMALE HOSE TAIL



SIZE	CODE
25mm	DFHT-025
40mm	DFHT-040
50mm	DFHT-050
65mm	DFHT-065
80mm	DFHT-080
100mm	DFHT-100

## SMS MALE HOSE TAIL



SIZE	CODE
25mm	SSMHT-025
40mm	SSMHT-040
50mm	SSMHT-050
65mm	SSMHT-065
80mm	SSMHT-080
100mm	SSMHT-100

## SMS FEMALE HOSE TAIL



SIZE	CODE
25mm	SSFHT-025
40mm	SSFHT-040
50mm	SSFHT-050
65mm	SSFHT-065
80mm	SSFHT-080
100mm	SSFHT-100



# STAINLESS SANITARY CRIMP HOSETAILS

## ROLLED DIN MALE HOSE TAIL



SIZE	CODE
25mm	DRHT1-025
40mm	DRHT1-040
50mm	DRHT1-050
65mm	DRHT1-065
80mm	DRHT1-080
100mm	DRHT1-100

## ROLLED DIN FEMALE HOSE TAIL



SIZE	CODE
25mm	DRHT2-025
40mm	DRHT2-040
50mm	DRHT2-050
65mm	DRHT2-065
80mm	DRHT2-080
100mm	DRHT2-100

## BSP MALE HOSE TAIL



SIZE	CODE
6mm	SHBM-006
8mm	SHBM-008
10mm	SHBM-010
15mm	SHBM-015
20mm	SHBM-020
25mm	SHBM-025
32mm	SHBM-032
40mm	SHBM-040
50mm	SHBM-050
65mm	SHBM-065
80mm	SHBM-080
100mm	SHBM-100

## BSP REDUCING MALE HOSE TAIL (Tail x BSP Male)



SIZE	CODE
08-06mm	SHTR-0806
10-08mm	SHTR-1008
15-10mm	SHTR-1510
20-15mm	SHTR-2015
25-15mm	SHTR-2515
25-20mm	SHTR-2520
40-15mm	SHTR-4015
40-20mm	SHTR-4020
40-25mm	SHTR-4025

## ROLLED BSM MALE HOSE TAIL



SIZE	CODE
25mm	DRHT3-025
40mm	DRHT3-040
50mm	DRHT3-050
65mm	DRHT3-065
80mm	DRHT3-080
100mm	DRHT3-100

## ROLLED BSM FEMALE HOSE TAIL



SIZE	CODE
25mm	DRHT4-025
40mm	DRHT4-040
50mm	DRHT4-050
65mm	DRHT4-065
80mm	DRHT4-080
100mm	DRHT4-100

# BSM RJT FITTINGS

**Hex Nut - 304**



SIZE	CODE
25mm	HN-025
40mm	HN-040
50mm	HN-050
65mm	HN-065
80mm	HN-080
100mm	HN-100

**BLANK NUT with Chain**



SIZE	CODE
25mm	BN-025
40mm	BN-040
50mm	BN-050
65mm	BN-065
80mm	BN-080
100mm	BN-100

**Male/Male Reducer**



SIZE	CODE
40-25mm	SMR-4025
50-25mm	SMR-5025
50-40mm	SMR-5040
65-40mm	SMR-6540
65-50mm	SMR-6550
80-50mm	SMR-8050
80-65mm	SMR-8065
100-80mm	SMR-10080

**Female/Female Reducer**



SIZE	CODE
40-25mm	SFR-4025
50-25mm	SFR-5025
50-40mm	SFR-5038
65-40mm	SFR-6540
65-50mm	SFR-6550
80-50mm	SFR-8050
80-65mm	SFR-8065
100-80mm	SFR-10080

**BSM Female/BSM Male Reducer**



SIZE	CODE
40-25mm	SFMR-4025
50-25mm	SFMR-5025
50-40mm	SFMR-5040
65-40mm	SFMR-6540
65-50mm	SFMR-6550
80-50mm	SFMR-8050
80-65mm	SFMR-8065
100-80mm	SFMR-10080

**BSM Male/Female Reducer**



SIZE	CODE
40-25mm	SMFR-4025
50-25mm	SMFR-5025
50-40mm	SMFR-5040
65-40mm	SMFR-6540
65-50mm	SMFR-6550
80-50mm	SMFR-8050
80-65mm	SMFR-8065
100-80mm	SMFR-10080

**Sight Glass**



SIZE	CODE
25mm	MSG-025
40mm	MSG-040
50mm	MSG-050
65mm	MSG-065
80mm	MSG-080
100mm	MSG-100

**BSM RJT Union**



SIZE	CODE
25mm	URJT-025
40mm	URJT-040
50mm	URJT-050
65mm	URJT-065
80mm	URJT-080
100mm	URJT-100

# BSM RJT FITTINGS

## RJT Male



SIZE	CODE
25mm	MRJT-025
40mm	MRJT-040
50mm	MRJT-050
65mm	MRJT-065
80mm	MRJT-080
100mm	MRJT-100

## RJT Liner



SIZE	CODE
25mm	RJTL-025
40mm	RJTL-040
50mm	RJTL-050
65mm	RJTL-065
80mm	RJTL-080
100mm	RJTL-100

## BSM Spanner



SIZE	CODE
25mm	BSMS-025
40mm	BSMS-040
50mm	BSMS-050
65mm	BSMS-065
80mm	BSMS-080
100mm	BSMS-100

## BSM Plastic Nut



SIZE	CODE
25mm	BPN-025
40mm	BPN-040
50mm	BPN-050
65mm	BPN-065
80mm	BPN-080
100mm	BPN-100

## BSM Male/Male Elbow



SIZE	CODE
25mm	MME-025
40mm	MME-040
50mm	MME-050
65mm	MME-065
80mm	MME-080
100mm	MME-100

## Male/Female Elbow



SIZE	CODE
25mm	RJTE-025
40mm	RJTE-040
50mm	RJTE-050
65mm	RJTE-065
80mm	RJTE-080
100mm	RJTE-100



# DIN FITTINGS

## WELD MALE



SIZE	CODE
25mm	DWM-025
40mm	DWM-040
50mm	DWM-050
65mm	DWM-065
80mm	DWM-080

## WELD LINER



SIZE	CODE
25mm	DSL-025
40mm	DSL-040
50mm	DSL-050
65mm	DSL-065
80mm	DSL-080

## BLANK CAP



SIZE	CODE
25mm	DBC-025
40mm	DBC-040
50mm	DBC-050
65mm	DBC-065
80mm	DBC-080

## ROUND NUT



SIZE	CODE
25mm	DRN-025
40mm	DRN-040
50mm	DRN-050
65mm	DRN-065
80mm	DRN-080

## MALE/FEMALE ELBOW



SIZE	CODE
25mm	DMFE-025
40mm	DMFE-040
50mm	DMFE-050
65mm	DMFE-065
80mm	DMFE-080

## MALE/MALE ELBOW



SIZE	CODE
25mm	DMME-025
40mm	DMME-040
50mm	DMME-050
65mm	DMME-065
80mm	DMME-080

## FEMALE/MALE REDUCER



SIZE	CODE
25mm	DMFR-025
40mm	DMFR-040
50mm	DMFR-050
65mm	DMFR-065
80mm	DMFR-080

## MALE/MALE REDUCER



SIZE	CODE
25mm	DMMR-025
40mm	DMMR-040
50mm	DMMR-050
65mm	DMMR-065
80mm	DMMR-080

# DIN FITTINGS

## MALE/MALE/FEMALE TEE



SIZE	CODE
25mm	DMFT-025
40mm	DMFT-040
50mm	DMFT-050
65mm	DMFT-065
80mm	DMFT-080

## MALE/LINER SIGHTGLASS



SIZE	CODE
25mm	DCSG-025
40mm	DCSG-040
50mm	DCSG-050
65mm	DCSG-065
80mm	DCSG-080

## DIN Male to BSP Adapter



SIZE	CODE
25mm	DMA-025
40mm	DMA-040
50mm	DMA-050
65mm	DMA-065
80mm	DMA-080

## UNION



SIZE	CODE
25mm	UD-025
40mm	UD-040
50mm	UD-050
65mm	UD-065
80mm	UD-080

## Liner to BSP Adapter



SIZE	CODE
25mm	DLA-025
40mm	DLA-040
50mm	DLA-050
65mm	DLA-065
80mm	DLA-080

## SPANNER



SIZE	CODE
25-40mm	DSS-2540
50-100mm	DSS-50100

## VITON SEAL



SIZE	CODE
25mm	DSV-025
40mm	DSV-040
50mm	DSV-050
65mm	DSV-065
80mm	DSV-080

## EPDM SEAL



SIZE	CODE
25mm	DSE-025
40mm	DSE-040
50mm	DSE-050
65mm	DSE-065
80mm	DSE-080

# TRI CLOVER FITTINGS

## Tri Clover Eccentric Reducer



SIZE	CODE
38-25mm	CTCR-3825
51-38mm	CTCR-5138
63-38mm	CTCR-6338
63-51mm	CTCR-6351
76-63mm	CTCR-7663
102-76mm	CTCR-0276

## Ferrules



SIZE	CODE
25mm	CTCF-025
38mm	CTCF-038
51mm	CTCF-051
63mm	CTCF-063
76mm	CTCF-076
102mm	CTCF-102

## Equal Tee



SIZE	CODE
25mm	TCT-025
38mm	TCT-038
51mm	TCT-051
63mm	TCT-063
76mm	TCT-076
102mm	TCT-102

## Cross



SIZE	CODE
25mm	CCTC-025
38mm	CCTC-038
51mm	CCTC-051
63mm	CCTC-063
76mm	CCTC-076
102mm	CCTC-102

## 45° Elbow



SIZE	CODE
25mm	TCE-4-025
38mm	TCE-4-038
51mm	TCE-4-051
63mm	TCE-4-063
76mm	TCE-4-076
102mm	TCE-4-102

## 90° Elbow



SIZE	CODE
25mm	TCE-90-025
38mm	TCE-90-038
51mm	TCE-90-051
63mm	TCE-90-063
76mm	TCE-90-076
102mm	TCE-90-102

## Y Piece



SIZE	CODE
25mm	CTCY-025
38mm	CTCY-038
51mm	CTCY-051
63mm	CTCY-063
76mm	CTCY-076
102mm	CTCY-102

## Blank Caps



SIZE	CODE
25mm	TCB-025
38mm	TCB-038
51mm	TCB-051
63mm	TCB-063
76mm	TCB-076
102mm	TCB-102

# TRI CLOVER FITTINGS

## Tri Clover to BSM RJT Female Adaptor



SIZE	CODE
25mm	TCBMF-025
38mm	TCBMF-038
51mm	TCBMF-051
63mm	TCBMF-063
76mm	TCBMF-076
102mm	TCBMF-102

## Tri Clover to BSM RJT Male Adaptor



SIZE	CODE
25mm	TCBM-025
38mm	TCBM-038
51mm	TCBM-051
63mm	TCBM-063
76mm	TCBM-076
102mm	TCBM-102

## Tri Clover to BSP Female Adaptor



SIZE	CODE
15mm	TCBPF-015
20mm	TCBPF-020
25mm	TCBPF-025
38mm	TCBPF-038
51mm	TCBPF-051
63mm	TCBPF-063

## Tri Clover to BSP Male Adaptor



SIZE	CODE
15mm	TBPM-015
20mm	TBPM-020
25mm	TBPM-025
38mm	TBPM-038
51mm	TBPM-051
63mm	TBPM-063

## Tri Clover Clamp



SIZE	CODE
25-38mm	TCC-2540
51mm	TCC-050
63mm	TCC-065
76mm	TCC-080
102mm	TCC-100

## Tri Clover Union



SIZE	CODE
25mm	TCU-025
38mm	TCU-038
51mm	TCU-051
63mm	TCU-063
76mm	TCU-076
102mm	TCU-102

## Tri Clover Sight Glass



SIZE	CODE
25mm	CCSG-025
38mm	CCSG-038
51mm	CCSG-051
63mm	CCSG-063
76mm	CCSG-076
102mm	CCSG-102

# SANITARY SEALS/GASKETS

## Flat Face Seal - Nitrile



SIZE	CODE
25mm	FFSS-025
38mm	FFSS-038
51mm	FFSS-051
63mm	FFSS-063
76mm	FFSS-076
102mm	FFSS-102

## Flat Face Seal - EPDM



SIZE	CODE
25mm	FFSE-025
38mm	FFSE-038
51mm	FFSE-051
63mm	FFSE-063
76mm	FFSE-076
102mm	FFSE-102

## Flat Face Seal - Viton (Food Grade)



SIZE	CODE
25mm	FFSV-025
38mm	FFSV-038
51mm	FFSV-051
63mm	FFSV-063
76mm	FFSV-076
102mm	FFSV-102

## Flat Face Seal - CIP



SIZE	CODE
25mm	FFSC-025
38mm	FFSC-038
51mm	FFSC-051
63mm	FFSC-063
76mm	FFSC-076
102mm	FFSC-102

## BSM O-Ring (EPDM)



SIZE	CODE
25mm	SORE-025
38mm	SORE-038
51mm	SORE-051
63mm	SORE-063
76mm	SORE-076
102mm	SORE-102

## BSM O-Ring (Silicone)



SIZE	CODE
25mm	SORS-025
38mm	SORS-038
51mm	SORS-051
63mm	SORS-063
76mm	SORS-076
102mm	SORS-102

## Tri Clover Gaskets



### EPDM

SIZE	CODE
25mm	TCGE-025
38mm	TCGE-038
51mm	TCGE-051
63mm	TCGE-063
76mm	TCGE-076
102mm	TCGE-102

### SILICONE/BUNA

SIZE	CODE
25mm	TCGS-025
38mm	TCGS-038
51mm	TCGS-051
63mm	TCGS-063
76mm	TCGS-076
102mm	TCGS-102

### TEFLON

SIZE	CODE
25mm	TCGT-025
38mm	TCGT-038
51mm	TCGT-051
63mm	TCGT-063
76mm	TCGT-076
102mm	TCGT-102

# STAINLESS BSP FITTINGS

**Toe - Nipple**



SIZE	CODE
6mm	SSTN-006
8mm	SSTN-008
10mm	SSTN-010
15mm	SSTN-015
20mm	SSTN-020
25mm	SSTN-025
32mm	SSTN-032
40mm	SSTN-040
50mm	SSTN-050
65mm	SSTN-065
80mm	SSTN-080
100mm	SSTN-100

**Barrel - Nipple**



SIZE	CODE
6mm	SSBN-006
8mm	SSBN-008
10mm	SSBN-010
15mm	SSBN-015
20mm	SSBN-020
25mm	SSBN-025
32mm	SSBN-032
40mm	SSBN-040
50mm	SSBN-050
65mm	SSBN-065
80mm	SSBN-080
100mm	SSBN-100

**Reducing - Nipple**



SIZE	CODE
08-06mm	SRN-0806
10-06mm	SRN-1006
10-08mm	SRN-1008
15-06mm	SRN-1506
15-08mm	SRN-1508
15-10mm	SRN-1510
20-08mm	SRN-2008
20-10mm	SRN-2010
20-15mm	SRN-2015
25-15mm	SRN-2515
25-20mm	SRN-2520
32-20mm	SRN-3220
32-25mm	SRN-3225
40-25mm	SRN-4025
40-32mm	SRN-4032
50-40mm	SRN-5040
80-65mm	SRN-8065

**Hex Bush**



SIZE	CODE
08-06mm	SHB-0806
10-06mm	SHB-1006
10-08mm	SHB-1008
15-06mm	SHB-1506
15-08mm	SHB-1508
15-10mm	SHB-1510
20-08mm	SHB-2008
20-10mm	SHB-2010
20-15mm	SHB-2015
25-15mm	SHB-2515
25-20mm	SHB-2520
32-20mm	SHB-3220
32-25mm	SHB-3225
40-25mm	SHB-4025
40-32mm	SHB-4032
50-40mm	SHB-5040
80-63mm	SHB-8065
100-80mm	SHB-10080



# STAINLESS BSP FITTINGS

## Elbow Female/Male 90°



SIZE	CODE
8mm	SEFM-008
10mm	SEFM-010
15mm	SEFM-015
20mm	SEFM-020
25mm	SEFM-025
32mm	SEFM-032
40mm	SEFM-040
50mm	SEFM-050

## Elbow - Female 90°



SIZE	CODE
6mm	SEF-006
8mm	SEF-008
10mm	SEF-010
15mm	SEF-015
20mm	SEF-020
25mm	SEF-025
32mm	SEF-032
40mm	SEF-040
50mm	SEF-050
65mm	SEF-065
80mm	SEF-080
100mm	SEF-100

## Elbow - Female 45°



SIZE	CODE
8mm	SEFM45-08
10mm	SEFM45-10
15mm	SEFM45-15
20mm	SEFM45-20
25mm	SEFM45-25
40mm	SEFM45-40
50mm	SEFM45-50

## Elbow - Female 45°



SIZE	CODE
8mm	SEF45-008
10mm	SEF45-010
15mm	SEF45-015
20mm	SEF45-020
25mm	SEF45-025
40mm	SEF45-040
50mm	SEF45-050

## Hex - Nipple



SIZE	CODE
6mm	SSHN-006
8mm	SSHN-008
10mm	SSHN-010
15mm	SSHN-015
20mm	SSHN-020
25mm	SSHN-025
32mm	SSHN-032
40mm	SSHN-040
50mm	SSHN-050
65mm	SSHN-065
80mm	SSHN-080
100mm	SSHN-100

## Tees - Female



SIZE	CODE
6mm	STF-006
8mm	STF-008
10mm	STF-010
15mm	STF-015
20mm	STF-020
25mm	STF-025
32mm	STF-032
40mm	STF-040
50mm	STF-050
65mm	STF-065
80mm	STF-080
100mm	STF-100

# STAINLESS BSP FITTINGS

## Barrell-Union (F/F)



SIZE	CODE
8mm	SUBF-008
10mm	SUBF-010
15mm	SUBF-015
20mm	SUBF-020
25mm	SUBF-025
32mm	SUBF-032
40mm	SUBF-040
50mm	SUBF-050
65mm	SUBF-065
80mm	SUBF-080

## Plug - Hex



SIZE	CODE
6mm	SHP-006
8mm	SHP-008
10mm	SHP-010
15mm	SHP-015
20mm	SHP-020
25mm	SHP-025
32mm	SHP-032
40mm	SHP-040
50mm	SHP-050
80mm	SHP-080

## Cap - Hex



SIZE	CODE
6mm	SHC-006
8mm	SHC-008
10mm	SHC-010
15mm	SHC-015
20mm	SHC-020
25mm	SHC-025
32mm	SHC-032
40mm	SHC-040
50mm	SHC-050
65mm	SHC-065
80mm	SHC-080

## Socket - Reducing



SIZE	CODE
08-06mm	SSR-0806
10-06mm	SSR-1006
10-08mm	SSR-1008
15-08mm	SSR-1508
15-10mm	SSR-1510
20-15mm	SSR-2015
25-15mm	SSR-2515
25-20mm	SSR-2520
32-25mm	SSR-3225
40-32mm	SSR-4032
50-40mm	SSR-5040
65-50mm	SSR-6550
80-50mm	SSR-8050
80-65mm	SSR-8065

## Sockets



SIZE	CODE
6mm	SSF-006
8mm	SSF-008
10mm	SSF-010
15mm	SSF-015
20mm	SSF-020
25mm	SSF-025
32mm	SSF-032
40mm	SSF-040
50mm	SSF-050
65mm	SSF-065
80mm	SSF-080
100mm	SSF-100

# STAINLESS TUBE FITTINGS

## Tube Nipple



SIZE	CODE
25mm	NAT -025
32mm	NAT -032
40mm	NAT -040
50mm	NAT -050
65mm	NAT -065
80mm	NAT -080

## Equal Tee



SIZE	CODE
15mm	STET-015
20mm	STET-020
25mm	STET-025
32mm	STET-032
40mm	STET-040
50mm	STET-050
65mm	STET-065
80mm	STET-080
100mm	STET-100
150mm	STET-150

## Tee Pulled



SIZE	CODE
25mm	STPT-025
32mm	STPT-032
40mm	STPT-040
50mm	STPT-050
65mm	STPT-065
80mm	STPT-080
100mm	STPT-100

## Y Piece



SIZE	CODE
25mm	SYPT-025
40mm	SYPT-040
50mm	SYPT-050
65mm	SYPT-065
80mm	SYPT-080
100mm	SYPT-100

## Elbows 90° (Polished)



SIZE	CODE
15mm	STEP-015
20mm	STEP-020
25mm	STEP-025
32mm	STEP-032
40mm	STEP-040
50mm	STEP-050
65mm	STEP-065
80mm	STEP-080
100mm	STEP-100

## Elbows 90° (Un Polished)



SIZE	CODE
15mm	STEUP-015
20mm	STEUP-020
25mm	STEUP-025
32mm	STEUP-032
40mm	STEUP-040
50mm	STEUP-050
65mm	STEUP-065
80mm	STEUP-080
100mm	STEUP-100

## Cross



SIZE	CODE
25mm	STC-025
32mm	STC-032
40mm	STC-040
50mm	STC-050
65mm	STC-065
80mm	STC-080
100mm	STC-100

# STAINLESS TUBE FITTINGS

## Concentric Reducers



SIZE	CODE
15-10mm	SCR-1510
20-08mm	SCR-2008
20-10mm	SCR-2010
20-15mm	SCR-2015
25-15mm	SCR-2515
25-20mm	SCR-2520
32-20mm	SCR-3220
32-25mm	SCR-3225
40-25mm	SCR-4025
40-32mm	SCR-4032
50-40mm	SCR-5040
50-20mm	SCR-5020
50-25mm	SCR-5025
50-32mm	SCR-5032
50-40mm	SCR-5040
65-25mm	SCR-6525
65-40mm	SCR-6540
65-50mm	SCR-6550
80-25mm	SCR-8025
80-40mm	SCR-8040
80-50mm	SCR-8050
80-65mm	SCR-8065
100-25mm	SCR-10025
100-40mm	SCR-10040
100-50mm	SCR-10050
100-65mm	SCR-10065

## Eccentric Reducers

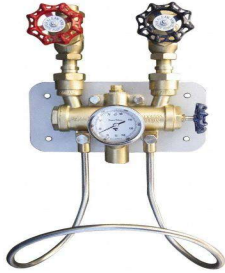


SIZE	CODE
15-10mm	SER-1510
20-08mm	SER-2008
20-10mm	SER-2010
20-15mm	SER-2015
25-15mm	SER-2515
25-20mm	SER-2520
32-20mm	SER-3220
32-25mm	SER-3225
40-25mm	SER-4025
40-32mm	SER-4032
50-40mm	SER-5040
50-20mm	SER-5020
50-25mm	SER-5025
50-32mm	SER-5032
50-40mm	SER-5040
65-25mm	SER-6525
65-40mm	SER-6540
65-50mm	SER-6550
80-25mm	SER-8025
80-40mm	SER-8040
80-50mm	SER-8050
80-65mm	SER-8065
100-25mm	SER-10025
100-40mm	SER-10040
100-50mm	SER-10050
100-65mm	SER-10065

**We also supply Stainless Tube Lengths in both 304 & 316SS**

## SUPERKLEAN MIXING UNITS

### Superklean Bronze Steam & Cold Water Safety Mixer (SKBM-8000)



The DURAMIX 8000B unit operates under a wide range of steam & water pressures without changing internal components. In fact, it is one of the only steam and cold water mixing units in the industry with the ability to operate with as little as 30 PSI water pressure. The Duramix also features a safety mechanism that shuts off steam when the water pressure hits 30 PSI.

#### Parts & Materials

\*Bronze Body \*Bronze Check Valve \*Bronze Globe Valve  
\*Temperature Gauge \*Hose Rack

### Superklean Stainless Steam & Cold Water Safety Mixer (SKSM-8000)



The DURAMIX 8000S unit operates under a wide range of steam and water pressures without changing internal components. In fact, it is one of the only steam and cold water mixing units in the industry with the ability to operate with as little as 30 PSI water pressure. The Duramix also features a safety mechanism that shuts off steam when the water pressure hits 30 PSI.

#### Parts & Materials

\*Stainless Body \*Stainless Check Valve \*Stainless Globe Valves  
\*Temperature Gauge \*Hose Rack

### Superklean Brass Hot & Cold Water Mixer (SKBM-3600)



The DURAMIX 3600B unit is a hot & cold water mixing unit specifically designed for thoroughly blending hot and cold water instantly to achieve the required temperature output. The unit uses "Y" style body mechanics with lift check valves & ball joint unions for superior flexibility during installation.

#### Parts & Materials

\*Brass Body \*Brass Check Valve \*Brass Globe Valves  
\*Temperature Gauge \*Hose Rack

## WASHDOWN EQUIPMENT

### Superklean Duraflow Mini (SK-MWG)



- \*Temperature: 93c Max
- \*Inlet: 1/2" BSP
- \*Body: Stainless Steel
- \*Max Pressure: 34 Bar
- \*Flow Rate: 100 L/min at 18 Bar

### Superklean Duraflow Lockable (SK-LG)



- \*Temperature: 93c Max
- \*Inlet: 1/2" BSP
- \*Body: Stainless Steel
- \*Max Pressure: 34 Bar
- \*Flow Rate: 100 L/min at 18 Bar
- \*Lockable Trigger

### RB 65 Heavy Duty One Piece (IM-WG1)



- \*Temperature: 90c Max
- \*Inlet: 1/2" Inlet
- \*Max Pressure: 24 Bar
- \*Chrome Brass Body
- \*Stainless Spindle
- \*Flow Rate: 100 L/min at 18 Bar



# BSP STAINLESS BALL VALVES

## 1 Piece Ball Valve

- \*PTFE Seat
- \*1000 PSI (69 Bar)
- \*Lockable Lever
- \*Reduced Bore
- \*Up to 180c



SIZE	CODE
8mm	S1PBV-008
10mm	S1PBV-010
15mm	S1PBV-015
20mm	S1PBV-020
25mm	S1PBV-025
32mm	S1PBV-032
40mm	S1PBV-040
50mm	S1PBV-050

## 2 Piece Ball Valve

- \*PTFE Seat
- \*1000 PSI (69 Bar)
- \*Lockable Lever
- \*Full Bore
- \*Up to 180c



SIZE	CODE
8mm	S2PBV-008
10mm	S2PBV-010
15mm	S2PBV-015
20mm	S2PBV-020
25mm	S2PBV-025
32mm	S2PBV-032
40mm	S2PBV-040
50mm	S2PBV-050
65mm	S2PBV-065
80mm	S2PBV-080
100mm	S2PBV-100

## 3 Piece Ball Valve

- \*PTFE Seat
- \*1000 PSI (69 Bar)
- \*Lockable Lever
- \*Full Bore
- \*Up to 180c



SIZE	CODE
8mm	S3PBV-08
10mm	S3PBV-10
15mm	S3PBV-15
20mm	S3PBV-20
25mm	S3PBV-25
32mm	S3PBV-32
40mm	S3PBV-40
50mm	S3PBV-50
65mm	S3PBV-65
80mm	S3PBV-80
100mm	S3PBV-100

## Seal Kit for S3PBV



SIZE	CODE
8mm	BVSK-008
10mm	BVSK-010
15mm	BVSK-015
20mm	BVSK-020
25mm	BVSK-025
32mm	BVSK-032
40mm	BVSK-040
50mm	BVSK-050
65mm	BVSK-065
80mm	BVSK-080
100mm	BVSK-100

# UTAM STEAM RATED VALVES

## Globe Valve

- \*Bronze Body
- \*Stainless Seat
- \*1,975 PSI (20 Bar)
- \*-20 to 210c
- \*Bronze Stem
- \*Bronze Disc
- \*BSP Screwed



SIZE	CODE
15mm	BSTGV-015
20mm	BSTGV-020
25mm	BSTGV-025
32mm	BSTGV-032
40mm	BSTGV-040
50mm	BSTGV-050
65mm	BSTGV-065
80mm	BSTGV-080
100mm	BSTGV-100

## Piston Lift Check Valve

- \*Bronze Body
- \*Stainless Seat
- \*1,975 PSI (20 Bar)
- \*-20 to 210c
- \*BSP Screwed



SIZE	CODE
15mm	BSTLCV-015
20mm	BSTLCV-020
25mm	BSTLCV-025
32mm	BSTLCV-032
40mm	BSTLCV-040
50mm	BSTLCV-050
65mm	BSTLCV-065
80mm	BSTLCV-080
100mm	BSTLCV-100

## Class 800 Piston Check Valve

- \*Carbon Steel Body
- \*Hard Face Seat
- \*1,975 PSI (136 Bar)
- \*-20 to 380c
- \*Piston Type Disc
- \*Graphite Gasket
- \*NPT Screwed



SIZE	CODE
15mm	CC8PCV-015
20mm	CC8PCV-020
25mm	CC8PCV-025
32mm	CC8PCV-032
40mm	CC8PCV-040
50mm	CC8PCV-050

## Class 800 Gate Valve

- \*Carbon Steel Body
- \*Hard Face Seat
- \*1,975 PSI (136 Bar)
- \*-20 to 470c
- \*Graphite Gasket
- \*NPT Screwed
- \*Stainless Stem



SIZE	CODE
15mm	CSC8GV-015
20mm	CSC8GV-020
25mm	CSC8GV-025
32mm	CSC8GV-032
40mm	CSC8GV-040
50mm	CSC8GV-050
100mm	CSC8GV-100

# CONSOLIDATED SCREWED SAFETY VALVES

## 1479 Screwed



### Features

- \*Bronze Body
- \*Bronze Bonnet
- \*Stainless Spring
- \*-28 to +230c
- \*Wing Guided Disc
- \*Forged Brass Disc
- \*Forged Brass Seat
- \*Brass Spindle
- \*297 PSI (20 Bar)
- \*Large Capacity

SIZE	CODE
15mm	1479SV-015
20mm	1479SV-020

### Applications:

- \*Liquids
- \*Water
- \*Steam

## S1541 Screwed with Lever



### Features

- \*Bronze Body
- \*Stainless Disc
- \*Stainless Spring
- \*-28 to +230c
- \*Wing Guided Disc
- \*Full Lift
- \*Bronze Bonnet
- \*Stainless Seat
- \*Stainless Spindle
- \*348 PSI (23 Bar)
- \*Medium Capacity

SIZE	CODE
15mm	S1541SV-015
20mm	S1541SV-020
25mm	S1541SV-025
40mm	S1541SV-040
50mm	S1541SV-050

### Applications:

- \*Gas
- \*Air
- \*Steam
- \*Oil
- \*Water

## 1543 Screwed with Lever



### Features

- \*Bronze Body
- \*Forged Brass Disc
- \*Stainless Spring
- \*-28 to +230c
- \*Wing Guided Disc
- \*Bronze Bonnet
- \*Forged Brass Seat
- \*Brass Spindle
- \*297 PSI (20 Bar)
- \*Large Capacity
- \*Full Lift

SIZE	CODE
15mm	1543SV-015
20mm	1543SV-020
25mm	1543SV-025
40mm	1543SV-040
50mm	1543SV-050

### Applications:

- \*Gas
- \*Air
- \*Steam

# CHADSTONE HYGIENIC BUTTERFLY VALVES

## Tri Clover Ends

- \*Lock Pull Handle
- \*304/316 Stainless
- \*10 Bar
- \*Up to 130c



SIZE	CODE
25mm	CSBV-C025
32mm	CSBV-C032
38mm	CSBV-C038
51mm	CSBV-C051
63mm	CSBV-C063
76mm	CSBV-C076

## Tri Clover Ends

- \*Stainless Handle
- \*304/316 Stainless
- \*10 Bar
- \*Up to 130c



SIZE	CODE
25mm	CSBV-C025
32mm	CSBV-C032
38mm	CSBV-C038
51mm	CSBV-C051
63mm	CSBV-C063
76mm	CSBV-C076

## Weld-Weld Ends

- \*Lock Pull Handle
- \*304/316 Stainless
- \*10 Bar
- \*Up to 130c



SIZE	CODE
25mm	CBV-W025
32mm	CBV-W032
38mm	CBV-W038
51mm	CBV-W051
63mm	CBV-W063
76mm	CBV-W076

## BSM Male-Female Ends

- \*Lock Pull Handle
- \*304/316 Stainless
- \*10 Bar
- \*Up to 130c



SIZE	CODE
25mm	CBV-MF025
32mm	CBV-MF032
38mm	CBV-MF038
51mm	CBV-MF051
63mm	CBV-MF063
76mm	CBV-MF076

## BSM Male Ends

- \*Lock Pull Handle
- \*304/316 Stainless
- \*10 Bar
- \*Up to 130c



SIZE	CODE
25mm	CBV-M025
32mm	CBV-M032
38mm	CBV-M038
51mm	CBV-M051
63mm	CBV-M063

## Weld-BSM Male Ends

- \*Lock Pull Handle
- \*316 Stainless
- \*10 Bar
- \*Up to 130c



SIZE	CODE
25mm	CBV-CO025
32mm	CBV-CO032
38mm	CBV-CO038
51mm	CBV-CO051
63mm	CBV-CO063
76mm	CBV-CO076

# CHADSTONE HYGIENIC VALVES

## Tri Clover Pressure Relief Valve

- \*316 Stainless
- \*EPDM Seal
- \*10 Bar
- \*Up to 120c



SIZE	CODE
25mm	CCRV-C025
40mm	CCRV-C040
50mm	CCRV-C050
65mm	CCRV-C065

## Tri Clover Spunding Valve

- \*316 Stainless
- \*EPDM Seal
- \*10 Bar
- \*Up to 120c



SIZE	CODE
25mm	CCSPV-025
40mm	CCPSV-040
50mm	CCPSV-050
65mm	CCPSV-065

## Tri Clover Non Return Valve

- \*316 Stainless
- \*EPDM Seal
- \*10 Bar
- \*Up to 120c



SIZE	CODE
25mm	CCNRV-025
32mm	CCNRV-032
38mm	CCNRV-038
51mm	CCNRV-051
63mm	CCNRV-063
76mm	CCNRV-076

## Butt Weld Non Return Valve

- \*316 Stainless
- \*EPDM Seal
- \*10 Bar
- \*Up to 120c



SIZE	CODE
25mm	CNRV-025
32mm	CNRV-032
38mm	CNRV-038
51mm	CNRV-051
63mm	CNRV-063
76mm	CNRV-076

## Tri Clover Ball Valve

- \*304/316 Stainless Body
- \*EPDM Gasket
- \*10 Bar
- \*Up to 130c



SIZE	CODE
25mm	CBAV-C25
40mm	CBAV-C40
50mm	CBAV-C50
65mm	CBAV-C65
80mm	CBAV-C80

## Diaphragm Valve

- \*304/316 Stainless Body
- \*EPDM Diaphragm
- \*10 Bar
- \*Up to 130c



SIZE	CODE
25mm	CDV-025
40mm	CDV-040
50mm	CDV-050
65mm	CDV-065
80mm	CDV-080

# CHADSTONE HYGIENIC SAMPLE VALVES

## Perlick Style A Sample Valve

- \*304 Stainless
- \*1.5" Tri Clover
- \*1/2" Tube Output



## Perlick Style B Sample Valve

- \*304 Stainless
- \*1.5" Tri Clover
- \*1/2" Tube Output



## Aseptic Sample Valve

- \*304 Stainless
- \*1.5" Tri Clover
- \*1/2" Tube Output



## Tri Clover Sample Valve

- \*304 Stainless
- \*1.5" Tri Clover
- \*1/2" Tube Output





# INOXPA HYGIENIC BUTTERFLY VALVES

## Tri Clover Butterfly Valve

- \*316 Stainless
- \*10 Bar
- \*-10 to +120c
- \*EPDM Seal



SIZE	CODE
25mm	IBV-C025
38mm	IBV-C038
51mm	IBV-C051
63mm	IBV-C063
76mm	IBV-C076
102mm	IBV-C102

## Butt Weld Butterfly Valve

- \*316 Stainless
- \*10 Bar
- \*-10 to +120c
- \*EPDM Seal



SIZE	CODE
25mm	IBV-W025
38mm	IBV-W038
51mm	IBV-W051
63mm	IBV-W063
76mm	IBV-W076
102mm	IBV-W102

## Din Male-Female Butterfly Valve

- \*316 Stainless
- \*10 Bar
- \*-10 to +120c
- \*EPDM Seal



SIZE	CODE
25mm	IBV-D025
38mm	IBV-D038
51mm	IBV-D051
63mm	IBV-D063
76mm	IBV-D076
102mm	IBV-D102

## Non Return Valve

- \*316 Stainless
- \*EPDM Seal
- \*10 Bar
- \*Up to 120c



SIZE	CODE
25mm	INRV-025
38mm	INRV-038
51mm	INRV-051
63mm	INRV-063
76mm	INRV-076
102mm	INRV-102

## Butterfly Valve Handle Options

### Stainless Handle



SIZE	CODE
	ISH-1

### 2 Position Pull Handle



SIZE	CODE
	IPH-2

### Plastic Handle



SIZE	CODE
	IPH-1

**\*Blue Plastic Handle is Standard Option but Handles can be changed**

# INOXPA AUTOMATED HYGIENIC VALVES

## Shut of Single Seat Valve

- \*Viton/ EPDM Seal
- \*145 PSI (10 Bar)
- \*-20 to 120c
- \*360 Adjustable Body

SIZE	CODE
25mm	IASSV-025
40mm	IASSV-040
50mm	IASSV-050
65mm	IASSV-065
80mm	IASSV-080
100mm	IASSV-100



## Butterfly Valve

- \*Viton/ EPDM Seal
- \*145 PSI (10 Bar)
- \*-20 to 120c
- \*Weld Ends

SIZE	CODE
25mm	IACBV-025
40mm	IACBV-040
50mm	IACBV-050
65mm	IACBV-065
80mm	IACBV-080
100mm	IACBV-100



## Tank Bottom Valve

- \*Viton/ EPDM Seal
- \*145 PSI (10 Bar)
- \*-20 to 120c
- \*360 Adjustable Body

SIZE	CODE
25mm	ITBV-025
40mm	ITBV-040
50mm	ITBV-050
65mm	ITBV-065
80mm	ITBV-080
100mm	ITBV-100



## Overflow Seat Valve

- \*Viton/ EPDM Seal
- \*145 PSI (10 Bar)
- \*-20 to 120c
- \*360 Adjustable Body

SIZE	CODE
25mm	IOSV-025
40mm	IOSV-040
50mm	IOSV-050
65mm	IOSV-065
80mm	IOSV-080



## Ball Valve

- \*Viton/ EPDM Seal
- \*145 PSI (10 Bar)
- \*-20 to 120c

SIZE	CODE
25mm	IBVA-025
40mm	IBVA-040
50mm	IBVA-050
65mm	IBVA-065
80mm	IBVA-080
100mm	IBVA-100



## Double Butterfly Valve

- \*Viton/ EPDM Seal
- \*145 PSI (10 Bar)
- \*-20 to 120c

SIZE	CODE
25mm	IDBV-025
40mm	IDBV-040
50mm	IDBV-050
65mm	IDBV-065
80mm	IDBV-080
100mm	IDBV-100



# INOXPA AUTOMATED HYGIENIC VALVES

## Regulating Seat Valve

- \*Viton/ EPDM Seal
- \*145 PSI (10 Bar)
- \*-20 to 120c
- \*360 Adjustable Body

SIZE	CODE
25mm	IRSV-025
40mm	IRSV-040
50mm	IRSV-050
65mm	IRSV-065
80mm	IRSV-080
100mm	IRSV-100



## Shut of Double Seat Valve

- \*Viton/ EPDM Seal
- \*145 PSI (10 Bar)
- \*-20 to 120c
- \*360 Adjustable Body

SIZE	CODE
25mm	IADSV-025
40mm	IADSV-040
50mm	IADSV-050
65mm	IADSV-065
80mm	IADSV-080
100mm	IADSV-100



## Control-Top



## Divert Seat Valve

- \*Viton/ EPDM Seal
- \*145 PSI (10 Bar)
- \*-20 to 120c
- \*180 Adjustable Body

SIZE	CODE
25mm	IDSV-025
40mm	IDSV-040
50mm	IDSV-050
65mm	IDSV-065
80mm	IDSV-080
100mm	IDSV-100



# BUTTERFLY VALVE SEALS

## Inoxpa Silicone Seal



SIZE	CODE
25mm	IBVS-S025
32mm	IBVS-S032
38mm	IBVS-S038
51mm	IBVS-S051
63mm	IBVS-S063
76mm	IBVS-S076
102mm	IBVS-S102

## Inoxpa EPDM Seal



SIZE	CODE
25mm	IBVS-E025
32mm	IBVS-E032
38mm	IBVS-E038
51mm	IBVS-E051
63mm	IBVS-E063
76mm	IBVS-E076
102mm	IBVS-E102

## Generic EPDM Seal (fits Geordi Valve)



SIZE	CODE
25mm	TBVS-E025
32mm	TBVS-E032
38mm	TBVS-E038
51mm	TBVS-E051
63mm	TBVS-E063
76mm	TBVS-E076
102mm	TBVS-E102

## Generic Silicone Seal (fits Geordi Valve)



SIZE	CODE
25mm	TBVS-S025
32mm	TBVS-S032
38mm	TBVS-S038
51mm	TBVS-S051
63mm	TBVS-S063
76mm	TBVS-S076
102mm	TBVS-S102

## Chadstone Silicone Seal



SIZE	CODE
25mm	CBVS-S025
32mm	CBVS-S032
38mm	CBVS-S038
50mm	CBVS-S050
63mm	CBVS-S063

## Chadstone EPDM Seal



SIZE	CODE
25mm	CBVS-E025
32mm	CBVS-E032
38mm	CBVS-E038
50mm	CBVS-E050
63mm	CSBV-E063

## Definox EPDM Seal



SIZE	CODE
25mm	DBVS-E025
32mm	DBVS-E032
38mm	DBVS-E038
51mm	DBVS-E050
63mm	DBVS-E063
76mm	DBVS-E076
102mm	DBVS-E100

## Definox Silicone Seal



SIZE	CODE
25mm	DBVS-S025
32mm	DBVS-S032
38mm	DBVS-S038
51mm	DBVS-S051
63mm	DBVS-S063
76mm	DBVS-S076
102mm	DBVS-S102

# HOSE CLAMPS

## Worm Drive Clamp W4 (Band, Housing & Screw 304 SS)



SIZE	CODE
13-20	W4WC-1320
13-23	W4WC-1323
14-27	W4WC-1427
17-32	W4WC-1732
21-38	W4WC-2138
21-45	W4WC-2145
27-51	W4WC-2751
33-57	W4WC-3357
40-64	W4WC-4064
46-70	W4WC-4670
52-76	W4WC-5276
59-83	W4WC-5983
65-89	W4WC-6589
71-95	W4WC-7195
78-102	W4WC-7802
84-108	W4WC-8408
91-114	W4WC-91-14

Box Qty (10)

## Worm Drive Clamp W2 (Band, Housing SS & Screw is Mild Steel)



SIZE	CODE
13-20	W2WC-1320
13-23	W2WC-1323
14-27	W2WC-1427
17-32	W2WC-1732
21-38	W2WC-2138
21-45	W2WC-2145
27-51	W2WC-2751
33-57	W2WC-3357
40-64	W2WC-4064
46-70	W2WC-4670
52-76	W2WC-5276
59-83	W2WC-5983
65-89	W2WC-6589
71-95	W2WC-7195
78-102	W2WC-7802
84-108	W2WC-8408
91-114	W2WC-91-14

Box Qty (10)

## Ultra Lock Clamps (19.1 Bandwith)



SIZE	CODE
50.8mm	ULC-50
69.9mm	ULC-69
76.2mm	ULC-76
88.9mm	ULC-88
101.6mm	ULC-101
114.3mm	ULC-114
127.0mm	ULC-127
139.7mm	ULC-139
152.4mm	ULC-152
165.1mm	ULC-165
177.8mm	ULC-177
203.2mm	ULC-203
228.6mm	ULC-228

## Spiral Clamp

### Clamp - Tube SS 304



SIZE	CODE
20mm	STC-020
25mm	STC-025
32mm	STC-032
40mm	STC-040
50mm	STC-050
63mm	STC-063
75mm	STC-075
100mm	STC-100

# HOSE CLAMPS

**Super Clamp W4**  
(Band, Housing & Screw 304 SS)



SIZE	CODE
17-19	4SSC-1719
19-21	4SSC-1921
21-23	4SSC-2123
23-25	4SSC-2325
25-27	4SSC-2527
27-29	4SSC-2729
31-33	4SSC-3133
33-35	4SSC-3335
35-37	4SSC-3537
37-39	4SSC-3739
39-41	4SSC-3941
41-43	4SSC-4143
43-45	4SSC-4345
45-47	4SSC-4547
47-49	4SSC-4749
49-51	4SSC-4951
51-53	4SSC-5153
53-55	4SSC-5355
55-57	4SSC-5557
57-59	4SSC-5759
59-61	4SSC-5961
61-63	4SSC-6163
63-65	4SSC-6365
65-67	4SSC-6567
67-69	4SSC-6769
69-71	4SSC-6971
71-73	4SSC-7173
73-75	4SSC-7375
75-77	4SSC-7577
77-79	4SSC-7779
79-81	4SSC-7981
81-83	4SSC-8183
83-85	4SSC-8385
85-87	4SSC-8587
87-89	4SSC-8789
89-91	4SSC-8991
91-93	4SSC-9193
93-95	4SSC-9395
95-97	4SSC-9597
97-99	4SSC-9799

**Super Clamp W2**  
(Band, Housing SS & Screw Mild Steel)

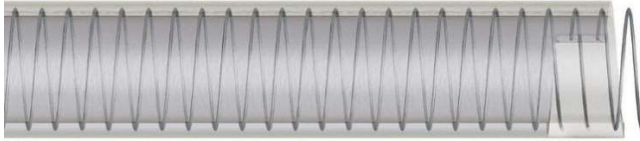


SIZE	CODE
17-19	2SSC-1719
19-21	2SSC-1921
21-23	2SSC-2123
23-25	2SSC-2325
25-27	2SSC-2527
27-29	2SSC-2729
31-33	2SSC-3133
33-35	2SSC-3335
35-37	2SSC-3537
37-39	2SSC-3739
39-41	2SSC-3941
41-43	2SSC-4143
43-45	2SSC-4345
45-47	2SSC-4547
47-49	2SSC-4749
49-51	2SSC-4951
51-53	2SSC-5153
53-55	2SSC-5355
55-57	2SSC-5557
57-59	2SSC-5759
59-61	2SSC-5961
61-63	2SSC-6163
63-65	2SSC-6365
65-67	2SSC-6567
67-69	2SSC-6769
69-71	2SSC-6971
71-73	2SSC-7173
73-75	2SSC-7375
75-77	2SSC-7577
77-79	2SSC-7779
79-81	2SSC-7981
81-83	2SSC-8183
83-85	2SSC-8385
85-87	2SSC-8587
87-89	2SSC-8789
89-91	2SSC-8991
91-93	2SSC-9193
93-95	2SSC-9395
95-97	2SSC-9597
97-99	2SSC-9799



# PVC HOSE

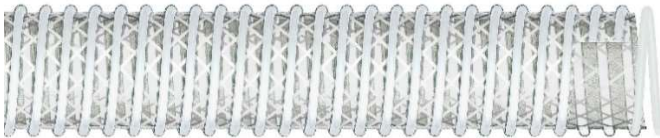
## Plutone Liquid Suction Hose (CLSH)



- \***Temperature:** -5 to +65c \***FDA Compliant**
- \***Applications:** Low Pressure Food & Chemical Suction as well as Water or Caustic Transfer.
- \*Good for up to 28% Alcohol
- \***Non Conductive, Non Toxic**

Hose ID	WP	Coil Size
16mm	6 Bar	30M
19mm	5 Bar	30M
25mm	5 Bar	30M
32mm	4 Bar	30M
38mm	4 Bar	30M
50mm	3 Bar	30M
63mm	2.5 Bar	30M
76mm	2 Bar	30M
102mm	2 Bar	30M
152mm	2 Bar	30M

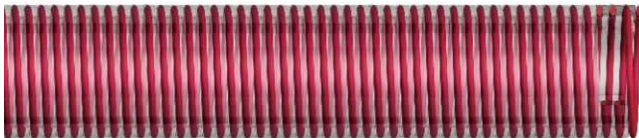
## Vacupress-Wine Suction Hose (VCS)



- \***Temperature:** -5 to +60c \***FDA Compliant**
- \***Applications:** Universal Food Suction Hose. Good for use with Liquid Food, Beer, Wine & Cider use.
- \*Good for up to 28% Alcohol

Hose ID	WP	Coil Size
25mm	20 Bar	30M
32mm	16 Bar	30M
38mm	14 Bar	30M
50mm	14 Bar	30M
63mm	12 Bar	30M
76mm	12 Bar	30M
102mm	10 Bar	30M
152mm	5 Bar	30M

## Nevada Wine/Food Suction Hose (CRSH)



- \***Temperature:** -10 to +60c \***FDA Compliant**
- \***Applications:** Food & Wine Suction.
- \*Can hold up to 30% Alcohol

Hose ID	WP	Coil Sizes
25mm	8 Bar	30M
32mm	8 Bar	30M
38mm	8 Bar	30M
51mm	8 Bar	30M
63mm	7 Bar	30M
76mm	6 Bar	30M
102mm	4 Bar	30M

# PVC HOSE

## Clear Multi Purpose Hose (CMPH)



**\*Temperature:** -10 to +60c

**\*Applications:** A non toxic multipurpose hose for the transfer of Air, Food, Water and Brine.

**\*FDA Compliant**

Hose ID	WP	Coil Size
6mm	17 Bar	20,100M
8mm	17 Bar	20,100M
10mm	17 Bar	20,100M
12.5mm	17 Bar	20,100M
16mm	17 Bar	20,100M
20mm	17 Bar	20M
25mm	17 Bar	20M
32mm	10 Bar	20M
38mm	10 Bar	20M
50mm	10 Bar	20M

## Kanaline FW Food Suction Hose (KFW)



**\*Temperature:** -25 to +60c

**\*FDA Compliant**

**\*Applications:** Heavy Duty Food & Wine Suction Hose for use with Bottling, Winemaking, Dairy & other liquid foods.

Hose ID	WP	Coil Sizes
38mm	7 Bar	30M
51mm	6 Bar	30M
63mm	6 Bar	30M
76mm	5 Bar	30M
102mm	4 Bar	30M

## Cold Wash Hose (CWH)



**\*Temperature:** -15 to +60c

**\*Applications:** Low Pressure Cold Washdown

Hose ID	WP	Coil Size
12mm	10 Bar	20M
19mm	10 Bar	20M
25mm	10 Bar	20M
32mm	10 Bar	20M

# TRELLEBORG PREMIUM RUBBER HOSE

## Alikler-Food Suction Hose (TFS1)



Hose ID	WP
25mm	10 Bar
38mm	10 Bar
51mm	10 Bar
63mm	10 Bar
76mm	10 Bar

\***Temperature:** -30 to +100c

\***Tube:** White NBR

\***Cover:** Oil & Weather resistant NBR

\***Reinforcement:** Synthetic textile with steel wire helix

\***Applications:** Lightweight beverage & food suction hose for use products such as beer, cider & wine.

## Trellvin Crush Resistant Beverage Suction Hose (TBS1)



Hose ID	WP
25mm	10 Bar
38mm	10 Bar
51mm	10 Bar
76mm	10 Bar

\***Temperature:** -30 to +100c

\***Tube:** White EPDM

\***Cover:** Weather resistant EPDM

\***Reinforcement:** Synthetic textile with PET helix

\***Applications:** Lightweight flexible beverage suction hose for use with juices, beer, wine & in most beverage suction requirements.

## Alcodial- Beverage Suction Hose (TBS2)



Hose ID	WP
38mm	10 Bar
51mm	10 Bar
76mm	10 Bar

\***Temperature:** -30 to +80c

\***Tube:** White UPE

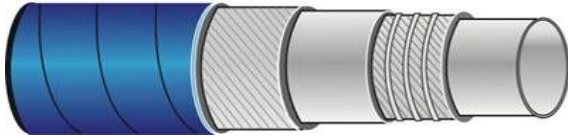
\***Cover:** Weather resistant NR

\***Reinforcement:** Synthetic textile with steel wire helix

\***Applications:** Lightweight flexible beverage suction hose specially made for use with the transfer of alcoholic beverages & spirits. Features such as an odourless tube & 99% alcohol resistant make perfect for use in distilleries.

# ALFAGOMMA PREMIUM RUBBER HOSE

## Rubber Fatty Food Suction Hose (REFS)



- \***Temperature:** -30 to +100c
- \***Tube:** White NBR
- \***Cover:** Oil & weather resistant NBR
- \***Reinforcement:** Synthetic textile with steel wire helix
- \***Applications:** Good for use in almost all food suction hose requirements including with the use of fatty & oily foods.

Hose ID	WP	Weight
19mm	10 Bar	0.74kg
25mm	10 Bar	0.92kg
38mm	10 Bar	1.08kg
38mm	10 Bar	1.27kg
51mm	10 Bar	1.64kg
63mm	10 Bar	2.15kg
76mm	10 Bar	2.58kg
102mm	10 Bar	3.58kg

## Steel Steam Hose (RSS1)



- \***Temperature:** -30 to +210c
- \***Cover:** Weather resistant NR
- \***Applications:** Good for use in saturated & superheated steam applications.
- \***Tube:** Black EPDM
- \***Reinforcement:** Tensile steel wire braids

Hose ID	WP
13mm	18 Bar
19mm	18 Bar
25mm	18 Bar
32mm	18 Bar

## Steam & Washdown Hose (RHW1)



- \***Temperature:** -20 to +165c
- \***Cover:** Blue NR
- \***Reinforcement:** High tensile textile piles.
- \***Applications:** Hot wash hose designed for washdown in breweries, wineries & food processing.
- \***Working pressure drops from 20 to 6 bar at 165c**
- \***Available in either Blue or White**

Hose ID	WP	Coil Size
12mm	20 Bar	20,40M
19mm	20 Bar	20,40M
25mm	20 Bar	20,40M

# INOXPA SANITARY PUMPS

## Hyginox SE-Centrifugal Pump (ICP-HSE)



- \*Max Flow Rates:2165 Lpm
- \*Liquid Temp:-10 to +120c
- \*Max Working Pressure:10 Bar
- \*Max Speed:3500 Rpm
- \*316 Stainless Steel Body

Hyginox SE is a close-coupled food-grade centrifugal pump with sanitary design, compact and efficient. It is made of a cold-formed stainless steel casing, stainless steel open impeller, mechanical seal, pump cover, lantern and shaft, connected to the motor shaft by mechanical compression. Applications include process pump in the dairy, beverage, pharmaceutical and cosmetic industries.

## Prolac Centrifugal Pump (ICP-HCP)



- \*Max Flow Rates:1,082 Lpm
- \*Liquid Temp:-10 to +120c
- \*Max Working Pressure:16 Bar
- \*Max Speed:3600 Rpm
- \*316 Stainless Steel

PROLAC HCP is a range of close-coupled centrifugal pumps with hygienic design, compact and highly efficient. It is made of a cold-formed stainless steel casing, impeller, mechanical seal, pump cover, lantern and shaft, connected to the motor shaft by mechanical compression. The pump is EHEDG certified, it is especially designed for CIP/SIP without disassembly. The Prolac is suitable for applications requiring a high level of hygiene, gentle handling of the product and resistance to chemical agents. This centrifugal pump is particularly suitable as main process pump in the dairy, beverage, pharmaceutical and cosmetic industries.

## Flexible Impeller Pump (IFIP-RF)



- \*Max Flow Rates:500 Lpm
- \*Liquid Temp:-10 to +80c
- \*Max Working Pressure: 4 Bar
- \*Max Speed:1450 Rpm
- \*316 Stainless Steel

The RF pump is a flexible impeller pump. Due to the design, these pumps are reversible and self priming and can be used in suction from a maximum height of 5 meters. This type of pump is designed to pump products of both low and high viscosity as well as materials containing particles or gases. The main applications are transfer of dairy products, edible oils, wine, concentrates, cream and beverages in general.

# INOXPA SANITARY PUMPS

## Aspir Side Channel Pump (ISP-ASP)



- \*Max Flow Rates:1,082 Lpm
- \*Liquid Temp:-10 to +120c
- \*Max Working Pressure:10 Bar
- \*Max Speed:1800 Rpm
- \*316 Stainless Steel

The Aspir pump is a sanitary side-channel self-priming pump suitable for use in the food-processing, pharmaceutical and chemical industries. It is specially designed for pumping materials containing air or gas, and it can also be used for negative suction with prior priming as well as with filtration equipment. It can be used with wine, oil, syrups, volatile products, syrups, volatile products such as alcohol, acetone and other solvents, or with products at temperatures close to boiling point. However the the main use of this pump is for CIP return.

## SLR Lobe Pump (ILP-SLR)



- \*Max Flow Rates:2668 Lpm
- \*Liquid Temp:-10 to +120c
- \*Max Working Pressure:16 Bar
- \*Max Speed:950 Rpm
- \*316 Stainless Steel

The SLR pump is a positive displacement rotary lobe pump of a sanitary design suitable for use in dairies, food-processing & wineries. This rotary lobe pump is perfect for managing all kinds of fluid,of either low or high viscosity as well as for filtering and bottling applications.Products containing fragile solids such as junket can be pumped without damage thanks to the specially designed lobes.

## TLS Lobe Pump (ILP-SLR)



- \*Max Flow Rates:500 Lpm
- \*Liquid Temp:-10 to +120c
- \*Max Working Pressure:12 Bar
- \*Max Speed:950 Rpm
- \*316 Stainless Steel

The TLS pump is a **positive displacement rotary lobe pump** designed according to sanitary requirements.The pump has a reduced size is a highly efficient & reliable, it is ideal for managing all kinds of fluids in both high & low viscosity.It is commonly used for Filtering in bottling applications.Products containing fragile solids such as junket can be pumped without damaged thanks to the specially designed lobes.

# INOXPA SANITARY PUMPS

## KSF Progressive Cavity Pump (IPCP-KSF)



- \*Max Flow Rates:750 Lpm
- \*Liquid Temp:-10 to +85c
- \*Max Working Pressure:6 Bar (Single Stage)
- \*Max Working Pressure:12 Bar (Double Stage)
- \*Max Speed:1450 Rpm
- \*316 Stainless Steel

The KSF is a selfpriming progressive cavity pump that is used in the transfer of high & low viscosity products containing soft particles. They are recommended for use with Edible Oils, Wines, Concentrates & Beverages in general.

## KSFT Progressive Cavity Pump (IPCP-KSFT)



- \*Max Flow Rates:567 Lpm
- \*Liquid Temp:-10 to +85c
- \*Max Working Pressure:6 Bar (Single Stage)
- \*Max Working Pressure:12 Bar (Double Stage)
- \*Max Speed:500 Rpm
- \*316 Stainless Steel

The KSFT is a self priming progressive cavity pump that is used in the transfer of high viscosity products such as doughs, pastes, sauces & viscus liquids.The KSFT comes standard with a hopper. pump, allowing rapid selfpriming to occur, even if the suction pipe is emptied. They are especially suited for clear low viscosity fluids: CIP solutions, water, juices, wine, spirits, chemicals and pharmaceutical media, in CIP scavenge/return and tank emptying duties.

## Pump Customisation



### Options

- \*Trolley
- \*Variable Speed Drive (to speed up or slow down pump)
- \*Base Plate



# PACKO SANITARY CENTRIFUGAL PUMPS

## FP 60 (PCP-FP60)-Hygienic Process Pump



- \*Max Flow Rates:666 Lpm
- \*Max Inlet Pressure:3 Bar
- \*Max Differential Head:27 Meters
- \*Max Viscosity:500 Cp
- \*Din, Tri Clamp or BSM End Connections
- \*Liquid Temp:-10 to +95c
- \*Max Motor:2.2Kw
- \*Max Speed:3600 rpm

The FP60 food pump is a level entry series are mainly used for pumping clean and slightly contaminated liquids.The pumps have open investment cast impellers in 316L. The FP60 pump series are a reliable component for your food production process.

### Applications

They are often used as process pump for heat exchangers, filtration units, filling machines, brine injectors, batter machines and CIP cleaning systems.

## FP1 (PCP-FP1)-Hygienic Process Pump



- \*Max Flow Rates:916 Lpm
- \*Max Inlet Pressure:6-13 Bar
- \*Max Differential Head:40-110 Meters
- \*Max Viscosity:1,000 Cp
- \*Din, Tri Clamp or BSM End Connections
- \*Open Impeller
- \*Liquid Temp:-10 to +140c
- \*Max Motor:5.5Kw
- \*Max Speed:3600 rpm

The FP1 food pump series are mainly used for pumping clean and slightly contaminated liquids. This series achieves an overall high efficiency, leading to a lower energy consumption for your production process. Thanks to its modular concept it also guarantees an easy maintenance.

### Applications

They are often used as process pump for heat exchangers, filtration units, filling machines, brine injectors, batter machines and CIP cleaning systems.

## FP3 (PCP-FP3)-Hygieinic Process Pump



- \*Max Flow Rates:5,333 Lpm
- \*Max Inlet Pressure:15 Bar
- \*Max Differential Head:120 Meters
- \*Max Viscosity:500 Cp
- \*Din, Tri Clamp or BSM End Connections
- \*Closed Impeller with back vanes and balancing holes
- \*Liquid Temp:-10 to +140c
- \*Max Motor:90Kw
- \*Max Speed:3600 rpm

These perfectly cleanable process pumps are the ideal solution for filtration applications, pasteurisation, evaporating systems, yeast propagation and for CIP cleaning systems as well.

### Applications

They are the ideal solution for filtration of beer, wine and fruit juices as well as pumping yeast.

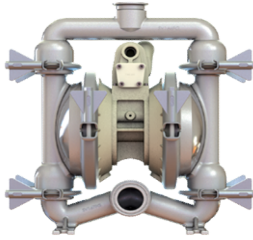
# VERSAMATIC SANITARY DIAPHRAGM PUMPS

Versamatic food processing pumps offer exceptional cleanability, ease of maintenance & superior reliability for your specialty hygienic applications. These air-operated double-diaphragm (AODD) pumps are built with FDA-compliant materials so they can be specified in food processing applications.

## Applications

Beer & Spirits.

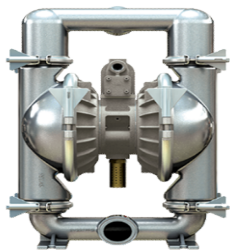
### VSDP-25



#### Specifications

- \*Liquid Inlet: 1.5"
- \*Air Inlet: 3/8"
- \*Max Solids: 3.1mm
- \*Max Suction Lift: 3.1m Dry, 9.4 m Wet
- \*Max Temp: -20 to 104c
- \*PVDF or Poly Body
- \*Liquid Discharge: 1.5"
- \*Max Flow Rates: 185 Lpm
- \*Max Pressure: 8.6 bar (125 psi)
- \*Liquid Connection: Tri Clover
- \*PTFE/Santoprene Diaphragm

### VSDP-50



#### Specifications

- \*Liquid Inlet: 2"
- \*Air Inlet: 1/2"
- \*Max Solids: 4.6mm
- \*Max Suction Lift: 4.6m Dry, 7.6m Wet
- \*Max Temp: -20 to 104c
- \*PVDF or Poly Body
- \*Liquid Discharge: 2"
- \*Max Flow Rates: 265 Lpm
- \*Max Pressure: 8.6 bar (125 psi)
- \*Liquid Connection: Tri Clover
- \*PTFE/Santoprene Diaphragm

# HYLOCK TUBE COMPRESSION FITTINGS

## Union Tube



SIZE	CODE
1/16"	STCU-116
1/8"	STCU-18
3/16"	STCU-316
1/4"	STCU-14
5/16"	STCU-516
3/8"	STCU-38
1/2"	STCU-12
5/8"	STCU-58
3/4"	STCU-34
1.0"	STCU-10

## Union Tube - Elbow



SIZE	CODE
1/16"	STCUE-116
1/8"	STCUE-18
3/16"	STCUE-316
1/4"	STCUE-14
5/16"	STCUE-516
3/8"	STCUE-38
1/2"	STCUE-12
5/8"	STCUE-58
3/4"	STCUE-34
1.0"	STCUE-10

## Tube - Union Tee



SIZE	CODE
1/16"	STCUT-116
1/8"	STCUT-18
3/16"	STCUT-316
1/4"	STCUT-14
5/16"	STCUT-516
3/8"	STCUT-38
1/2"	STCUT-12
5/8"	STCUT-58
3/4"	STCUT-34
1.0"	STCUT-10

## Tube - Union Bulk Head



SIZE	CODE
1/16"	STCUB-116
1/8"	STCUB-18
3/16"	STCUB-316
1/4"	STCUB-14
5/16"	STCUB-516
3/8"	STCUB-38
1/2"	STCUB-12
5/8"	STCUB-58
3/4"	STCUB-34
1.0"	STCUB-10

## Tube - Union Cross



SIZE	CODE
1/16"	STCUC-116
1/8"	STCUC-18
3/16"	STCUC-316
1/4"	STCUC-14
5/16"	STCUC-516
3/8"	STCUC-38
1/2"	STCUC-12
5/8"	STCUC-58
3/4"	STCUC-34
1.0"	STCUC-10

## Tube - Male Connector



SIZE	CODE
1/16"	STCMC-116
1/8"	STCMC-18
3/16"	STCMC-316
1/4"	STCMC-14
5/16"	STCMC-516
3/8"	STCMC-38
1/2"	STCMC-12
5/8"	STCMC-58
3/4"	STCMC-34
1.0"	STCMC-10

**\*All Compression Fittings Available in NPT or BSP Thread**

# HYLOCK TUBE COMPRESSION FITTINGS

**Tube - Male Branch Tee**



SIZE	CODE
1/16"	STCMBT-116
1/8"	STCMBT-18
3/16"	STCMBT-316
1/4"	STCMBT-14
5/16"	STCMBT-516
3/8"	STCMBT-38
1/2"	STCMBT-12
5/8"	STCMBT-58
3/4"	STCMBT-34
1.0"	STCMBT-10

**Tube - Male Elbow**



SIZE	CODE
1/16"	STCME-116
1/8"	STCME-18
3/16"	STCME-316
1/4"	STCME-14
5/16"	STCME-516
3/8"	STCME-38
1/2"	STCME-12
5/8"	STCME-58
3/4"	STCME-34
1.0"	STCME-10

**Tube - Male Run Tee**



SIZE	CODE
1/16"	STCMRT-116
1/8"	STCMRT-18
3/16"	STCMRT-316
1/4"	STCMRT-14
5/16"	STCMRT-516
3/8"	STCMRT-38
1/2"	STCMRT-12
5/8"	STCMRT-58
3/4"	STCMRT-34
1.0"	STCMRT-10

**Tube - Male Connector**



SIZE	CODE
1/16"	STCMC-116
1/8"	STCMC-18
3/16"	STCMC-316
1/4"	STCMC-14
5/16"	STCMC-516
3/8"	STCMC-38
1/2"	STCMC-12
5/8"	STCMC-58
3/4"	STCMC-34
1.0"	STCMC-10

**Tube - Male Elbow 45\***



SIZE	CODE
1/16"	STCME2-116
1/8"	STCME2-18
3/16"	STCME2-316
1/4"	STCME2-14
5/16"	STCME2-516
3/8"	STCME2-38
1/2"	STCME2-12
5/8"	STCME2-58
3/4"	STCME2-34
1.0"	STCME2-10

**Tube - Female Bulkhead**



SIZE	CODE
1/16"	STCFB-116
1/8"	STCFB-18
3/16"	STCFB-316
1/4"	STCFB-14
5/16"	STCFB-516
3/8"	STCFB-38
1/2"	STCFB-12
5/8"	STCFB-58
3/4"	STCFB-34
1.0"	STCFB-10

**\*All Compression Fittings Available in NPT or BSP Thread**

# HYLOCK TUBE COMPRESSION FITTINGS

**Tube - Female Branch Tee**



SIZE	CODE
1/16"	STCFBT-116
1/8"	STCFBT-18
3/16"	STCFBT-316
1/4"	STCFBT-14
5/16"	STCFBT-516
3/8"	STCFBT-38
1/2"	STCFBT-12
5/8"	STCFBT-58
3/4"	STCFBT-34
1.0"	STCFBT-10

**Tube - Female Elbow**



SIZE	CODE
1/16"	STCFE-116
1/8"	STCFE-18
3/16"	STCFE-316
1/4"	STCFE-14
5/16"	STCFE-516
3/8"	STCFE-38
1/2"	STCFE-12
5/8"	STCFE-58
3/4"	STCFE-34
1.0"	STCFE-10

**Tube - Female Run Tee**



SIZE	CODE
1/16"	STCFRT-116
1/8"	STCFRT-18
3/16"	STCFRT-316
1/4"	STCFRT-14
5/16"	STCFRT-516
3/8"	STCFRT-38
1/2"	STCFRT-12
5/8"	STCFRT-58
3/4"	STCFRT-34
1.0"	STCFRT-10

**Tube - Female Connector**



SIZE	CODE
1/16"	STCFC-116
1/8"	STCFC-18
3/16"	STCFC-316
1/4"	STCFC-14
5/16"	STCFC-516
3/8"	STCFC-38
1/2"	STCFC-12
5/8"	STCFC-58
3/4"	STCFC-34
1.0"	STCFC-10

**Tube - Female Bulkhead**



SIZE	CODE
1/16"	STCFB-116
1/8"	STCFB-18
3/16"	STCFB-316
1/4"	STCFB-14
5/16"	STCFB-516
3/8"	STCFB-38
1/2"	STCFB-12
5/8"	STCFB-58
3/4"	STCFB-34
1.0"	STCFB-10

# FLOW METERS

## G2 BSP Thread Flow Meter

- \*BSP Threaded Ends
- \*-40 to 121c
- \*316 Stainless
- \*High accuracy meter
- \*Lithium battery life: 5 years
- \*1,136 Max Litres Per Minute



SIZE	CODE
25mm	BSFM-025
38mm	BSFM-038
51mm	BSFM-051
63mm	BSFM-063

## G2 Tri Clover Flow Meter

- \*Tri Clover Ends
- \*-40 to 121c
- \*316 Stainless
- \*High accuracy meter
- \*Lithium battery life: 5 years
- \*1,136 Max Litres Per Minute



SIZE	CODE
25mm	TCFM-025
38mm	TCFM-038
51mm	TCFM-051
63mm	TCFM-063

## Yokogawa Electromagnetic Sanitary Flow Meter



### Features

- \*Suitable for constant process temperatures: -25 to +90c
- \*Available in 240V or 24V
- \*High accuracy (+/-0.2% +/-2mm/s)
- \*200,000 line inbuilt active data logger – standard
- \*PFA Food Grade liner
- \*Pulse output
- \*Sizes 15mm – 100mm
- \*-40 to 140c operating temperature
- \*IP68 rated suitable for washdown
- \*High accuracy (+/-0.2% +/-2mm/s)
- \*Dual Frequency
- \*Tri Clamp Connections
- \*Alarm contact output
- \*Tri Clamp or Din Connection

### Applications:

- \*Precise blending, dosing and batching
- \*Tank filling, truck filling
- \*Beverages (soft drinks, beer, wine, fruits juices etc.)
- \*CIP media (incl. acids and caustic solutions)

## HOSE REELS

### Washdown Hose Reel (RWHR1)



- \*15mm ID Hot Wash Hose
- \*15 Meters Long
- \*Spring Rewind
- \*PVC Reel

### Washdown Hose Reel (RWHR2)



- \*15mm ID Hot Wash Hose
- \*20 Meters Long
- \*Spring Rewind
- \*PVC Reel

### Washdown Hose Reel (RWHR3)



- \*20mm ID Hot Wash Hose
- \*15 Meters Long
- \*Spring Rewind
- \*PVC Reel

### Nitrogen Hose Reel (RNHR1)



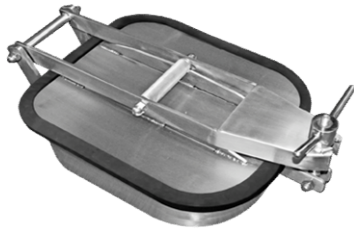
- \*10mm ID Nitrogen Hose
- \*15 Meters Long
- \*Spring Rewind
- \*PVC Reel

### Nitrogen Hose Reel (RNHR2)



- \*10mm ID Nitrogen Hose
- \*20 Meters Long
- \*Spring Rewind
- \*PVC Reel

## MANWAY TANK SEALS



Manway seals come in many shapes, sizes & material, NFS Stocks most sizes on the shelf but we also supply seals for those rare tanks, Below is a list of the more common shapes, if the seal you desire isn't below don't panic we will still be able to provide the seal.



Our standard seals are available in the following material

- \*Silicone
- \*Viton
- \*Nitrile





# CAMLOCK FITTINGS

## Male - Type A

Male Camlock/BSP Female



SIZE	Stainless Aluminum Poly		
	CODE	CODE	CODE
15mm	SSAC-015	AAC-015	PPAC-015
20mm	SSAC-020	AAC-020	PPAC-020
25mm	SSAC-025	AAC-025	PPAC-025
32mm	SSAC-032	AAC-032	PPAC-032
40mm	SSAC-040	AAC-040	PPAC-040
50mm	SSAC-050	AAC-050	PPAC-050
65mm	SSAC-065	AAC-065	PPAC-065
80mm	SSAC-080	AAC-080	PPAC-080
100mm	SSAC-100	AAC-100	PPAC-100
125mm	SSAC-125	AAC-125	PPAC-125
150mm	SSAC-150	AAC-150	PPAC-150

## Female - Type B

Female Camlock /BSP Male



SIZE	Stainless Aluminum Poly		
	CODE	CODE	CODE
15mm	SSBC-015	ABC-015	PPBC-015
20mm	SSBC-020	ABC-020	PPBC-020
25mm	SSBC-025	ABC-025	PPBC-025
32mm	SSBC-032	ABC-032	PPBC-032
40mm	SSBC-040	ABC-040	PPBC-040
50mm	SSBC-050	ABC-050	PPBC-050
65mm	SSBC-065	ABC-065	PPBC-065
80mm	SSBC-080	ABC-080	PPBC-080
100mm	SSBC-100	ABC-100	PPBC-100
125mm	SSBC-125	ABC-125	PPBC-125
150mm	SSBC-150	ABC-150	PPBC-150

## Female - Type C

Female Camlock /Hose Tail



SIZE	Stainless Aluminum Poly		
	CODE	CODE	CODE
15mm	SSCC-015	ACC-015	PPCC-015
20mm	SSCC-020	ACC-020	PPCC-020
25mm	SSCC-025	ACC-025	PPCC-025
32mm	SSCC-032	ACC-032	PPCC-032
40mm	SSCC-040	ACC-040	PPCC-040
50mm	SSCC-050	ACC-050	PPCC-050
65mm	SSCC-065	ACC-065	PPCC-065
80mm	SSCC-080	ACC-080	PPCC-080
100mm	SSCC-100	ACC-100	PPCC-100
125mm	SSCC-125	ACC-125	PPCC-125
150mm	SSCC-150	ACC-150	PPCC-150

## Female - Type D

Female Camlock /BSP Female



SIZE	Stainless Aluminum Poly		
	CODE	CODE	CODE
15mm	SDDC-015	ADC-015	PPDC-015
20mm	SDDC-020	ADC-020	PPDC-020
25mm	SDDC-025	ADC-025	PPDC-025
32mm	SDDC-032	ADC-032	PPDC-032
40mm	SDDC-040	ADC-040	PPDC-040
50mm	SDDC-050	ADC-050	PPDC-050
65mm	SDDC-065	ADC-065	PPDC-065
80mm	SDDC-080	ADC-080	PPDC-080
100mm	SDDC-100	ADC-100	PPDC-100
125mm	SDDC-125	ADC-125	PPDC-125
150mm	SDDC-150	ADC-150	PPDC-150

# CAMLOCK FITTINGS

## Male - Type E

Male Camlock / Hose Tail



	Stainless	Aluminum	Poly
SIZE	CODE	CODE	CODE
15mm	SSEC-015	AEC-015	PPEC-015
20mm	SSEC-020	AEC-020	PPEC-020
25mm	SSEC-025	AEC-025	PPEC-025
32mm	SSEC-032	AEC-032	PPEC-032
40mm	SSEC-040	AEC-040	PPEC-040
50mm	SSEC-050	AEC-050	PPEC-050
65mm	SSEC-065	AEC-065	PPEC-065
80mm	SSEC-080	AEC-080	PPEC-080
100mm	SSEC-100	AEC-100	PPEC-100
150mm	SSEC-125	AEC-125	PPEC-125
150mm	SSEC-150	AEC-150	PPEC-150

## Female - Type F

Male Camlock /BSP Male



	Stainless	Aluminum	Poly
SIZE	CODE	CODE	CODE
15mm	SSFC-015	AFC-015	PPFC-015
20mm	SSFC-020	AFC-020	PPFC-020
25mm	SSFC-025	AFC-025	PPFC-025
32mm	SSFC-032	AFC-032	PPFC-032
40mm	SSFC-040	AFC-040	PPFC-040
50mm	SSFC-050	AFC-050	PPFC-050
65mm	SSFC-065	AFC-065	PPFC-065
80mm	SSFC-080	AFC-080	PPFC-080
100mm	SSFC-100	AFC-100	PPFC-100
150mm	SSFC-125	AFC-125	PPFC-125
150mm	SSFC-150	AFC-150	PPFC-150

## Dust Caps - Type DC



	Stainless	Aluminum	Poly
SIZE	CODE	CODE	CODE
15mm	DCSS-015	DCA-015	DCPP-015
20mm	DCSS-020	DCA-020	DCPP-020
25mm	DCCC-025	DCA-025	DCPP-025
32mm	DCSS-032	DCA-032	DCPP-032
40mm	DCSS-040	DCA-040	DCPP-040
50mm	DCSS-050	DCA-050	DCPP-050
65mm	DSSC-065	DCA-063	DCPP-065
80mm	DCSS-080	DCA-080	DCPP-080
100mm	DCSS-100	DCA-100	DCPP-100
125mm	DCSS-125	DCA-125	DCPP-125
150mm	DCSS-150	DCA-150	DCPP-150

## Camlock Seals



	Buna	Viton	Foodgrade
SIZE	CODE	CODE	CODE
15mm	BCS-015	VCS-015	N/A
20mm	BCS-020	VCS-020	FGCS-020
25mm	BCS-025	VCS-025	FGCS-025
32mm	BCS-032	VCS-032	N/A
38mm	BCS-040	VCS-040	FGCS-040
40mm	BCS-050	VCS-050	FGCS-050
50mm	BCS-065	VCS-065	FGCS-065
65mm	BCS-080	VCS-080	FGCS-080
80mm	BCS-100	VCS-100	FGCS-100
100mm	BCS-125	VCS-125	N/A
150mm	BCS-150	VCS-150	N/A

# CHADSTONE SPRAY BALLS



## Type A

- \*316 Stainless Steel
- \*360 Degree Spray Pattern
- \*Up to 95c Operating Temp
- \*BSP Connection

Size	Code	Flow	Radius	Pressure
25mm	CASB-025	283 Lpm	1.25M	2.5 Bar
40mm	CASB-040	383 Lpm	1.75M	2.5 Bar
50mm	CASB-050	916 Lpm	3.0M	3.5 Bar
65mm	CASB-065	966 Lpm	3.5M	3.5 Bar

## Type B

- \*316 Stainless Steel
- \*360 Degree Spray Pattern
- \*Up to 95c Operating Temp
- \*Clip Connection

Size	Code	Flow	Radius	Pressure
25mm	CBSB-025	53 Lpm	1.25M	2.5 Bar
40mm	CBSB-040	78 Lpm	1.75M	2.5 Bar
50mm	CBSB-050	175 Lpm	3.0M	3.5 Bar
65mm	CBSB-065	193 Lpm	3.5M	3.5 Bar

## Type C

- \*316 Stainless Steel
- \*360 Degree Spray Pattern
- \*Up to 95c Operating Temp
- \*Weld Connection

Size	Code	Flow	Radius	Pressure
25mm	CCSB-025	53 Lpm	1.25M	2.5 Bar
40mm	CCSB-040	78 Lpm	1.75M	2.5 Bar
50mm	CCSB-050	175 Lpm	3.0M	3.5 Bar
65mm	CCSB-065	193 Lpm	3.5M	3.5 Bar

# CHADSTONE ROTARY TANK CLEANERS



## Hurricane-Threaded Connection

- \*316 Stainless Steel
- \*360 Degree Spray Pattern
- \*2-6 Bar Working Pressure
- \*Up to 95c Operating Temp
- \*Threaded BSP Connection

Size	Code	Flow	Radius	Ball
20mm	HRC-020	108 Lpm	2.2M	45mm
25mm	HRC-025	116 Lpm	2.5M	45mm
40mm	HRC1-040	267 Lpm	3.1M	65mm
40mm	HRC2-040	367 Lpm	4.2M	75mm
50mm	HRC-050	417 Lpm	4.4M	75mm

## Thunder-Clip Connection

- \*316 Stainless Steel
- \*360 Degree Spray Pattern
- \*2-6 Bar Working Pressure
- \*Up to 95c Operating Temp
- \*Clip Connection

Size	Code	Flow	Radius	Ball
20mm	TRC-020	100 Lpm	2.2M	45mm
25mm	TRC-025	108 Lpm	2.5M	45mm
40mm	TRC-040	250 Lpm	3.1M	65mm
50mm	TRC-050	267 Lpm	3.2M	65mm
40mm	TRC2-040	300 Lpm	4.1M	75mm
50mm	TRC2-050	367 Lpm	4.2M	75mm
65mm	TRC-065	417 Lpm	4.4M	75mm

## Storm Weld Connection

- \*316 Stainless Steel
- \*360 Degree Spray Pattern
- \*2-6 Bar Working Pressure
- \*Up to 95c Operating Temp
- \*Weld Connection

Size	Code	Flow	Radius	Ball
20mm	SRC-020	100 Lpm	2.2M	45mm
25mm	SRC-025	108 Lpm	2.5M	45mm
40mm	SRC-040	250 Lpm	3.1M	65mm
50mm	SRC-050	267 Lpm	3.2M	65mm
40mm	SRC2-040	300 Lpm	4.1M	75mm
50mm	SRC2-050	367 Lpm	4.2M	75mm
65mm	SRC-065	417 Lpm	4.4M	75mm

# BRECCONCHERRY TANK CLEANERS

## Turbo SSB 40 Rotary Cleaning Ball

- \*316 Stainless Steel
- \*360 Degree Spray Pattern
- \*2-5 Bar Working Pressure
- \*Up to 95c Operating Temp
- \*61 Lpm (Max) Flow Rate
- \*3.0 M Cleaning Diametre
- \*Threaded Connection 10mm
- \*Clip or Connection for Pipe 15mm



## Turbo SSB 75 Rotary Cleaning Ball

- \*316 Stainless Steel
- \*360 Degree Spray Pattern
- \*2-10 Bar Working Pressure
- \*Up to 95c Operating Temp
- \*153 Lpm (Max) Flow Rate
- \*4.7 M Cleaning Diametre
- \*Threaded Connection 20mm
- \*Clip or Connection for Pipe 25mm



## Turbo SSB 125 Rotary Cleaning Ball

- \*316 Stainless Steel
- \*360 Degree Spray Pattern
- \*2-6 Bar Working Pressure
- \*Up to 95c Operating Temp
- \*408 Lpm (Max) Flow Rate
- \*10.0 M Cleaning Diametre
- \*Threaded Connection 32mm
- \*Clip or Connection for Tube 40mm



## Troll Rotary Cleaning Ball

- \*316 Stainless Steel
- \*360 Degree Spray Pattern
- \*3-12 Bar Working Pressure
- \*Up to 120c Operating Temp
- \*270 Lpm (Max) Flow Rate
- \*7.0 M Cleaning Diametre
- \*Threaded Connection 40mm



## Twister Orbital Cleaner

- \*316 Stainless Steel
- \*360 Degree Spray Pattern
- \*4-10 Bar Working Pressure
- \*Up to 95c Operating Temp
- \*97 Lpm (Max) Flow Rate
- \*16.0 M Cleaning Diametre
- \*Threaded Connection 20mm
- \*Clip Connection for Tube 20mm



## Typhoon Orbital Cleaner

- \*316 Stainless Steel
- \*360 Degree Spray Pattern
- \*4-10 Bar Working Pressure
- \*Up to 95c Operating Temp
- \*97 Lpm (Max) Flow Rate
- \*17.0 M Cleaning Diametre
- \*Threaded Connection 25mm
- \*Clip Connection for Tube 25mm



## Tornado Orbital Cleaner

- \*316 Stainless Steel
- \*360 Degree Spray Pattern
- \*4-8 Bar Working Pressure
- \*Up to 95c Operating Temp
- \*378 Lpm (Max) Flow Rate
- \*27.0 M Cleaning Diametre
- \*Threaded Connection 40mm
- \*Clip Connection for Tube 40mm



## Tornado 4 Orbital Cleaner

- \*316 Stainless Steel
- \*360 Degree Spray Pattern
- \*4-10 Bar Working Pressure
- \*Up to 95c Operating Temp
- \*790 Lpm (Max) Flow Rate
- \*33.0 M Cleaning Diametre
- \*Threaded Connection 40mm
- \*Clip Connection for Tube 40mm



# INOXPA TANK CLEANING EQUIPMENT

## Inoxpa Manual CIP System



- \*AISI 304 insulated tank (500L)
- \*Estampinox EFI discharge pump (4 Kw).
- \*Manually operated Inoxpa Butterfly Valves
- \*Pressure gauge at the pump outlet
- \*Stainless steel electric box with temperature control
- \*Electric heating in the tank
- \*AISI 304 frame with wheels
- \*Cleans tanks of up to 3,000L

## Inoxpa Automated CIP Skid System



- \*Two AISI 316 tanks, jacketed, of 1000L
- \*One AISI 304 tank, not jacketed, 1500L for recovered water
- \*Heating by a steam heat exchanger, with a graduated acting steam valve
- \*Heating by a steam heat exchanger, with a
- \*Graduated acting steam valve
- \*Peristaltic, piston and membrane pumps for dosing
- \*Pneumatic butterfly valves with control top.
- \*Temperature control inside the tanks
- \*Flow control in the return line
- \*5.5kW Hyginox SE impulsion pump
- \*Filter in return line
- \*Level control in the tanks
- \*Pressure gauge at the pump impulsion
- \*10" touch screen
- \*PLC Siemens system control

# INOXPA GASKET PLATED HEAT EXCHANGERS

## Heat Exchange (ISHE-I26)



**Plates:** AISI 316 L  
**Frame:** AISI 304 stainless steel (I7, I9, I26)  
**Gaskets:** NBR  
**Max Pressure:** 10 bar  
**Max Temperature:** 130  
**Connections:** Flange, Clamp, DIN, SMS

The Inoxpa Plate Heat Exchanger (models: I7 / I9 / I13 / I26) are used in the food processing, dairy & beverage industries for use with heating & cooling processing eg: pasteurisation. Most processes include a stage in which a product is either cooled or heated, or both, through several heat transfer sections this can be achieved with the help of heat exchangers. The Inoxpa Plate Heat Exchangers are extremely versatile: with a simple modification in the number of plates, they can be adjusted according to changes in the product flow capacity or changes in the application operating temperature. There are different plate models depending on application which are available upon request: double plates (for processes where contamination should be avoided), free-flow for medium viscosity products or products with a low content of suspended solids.

# EBARA WATER / WASTE PUMPS

## 3 Series End Suction Pumps 3M,3M4 (EP-3M)



\*Flow Rates:50 to 600 lpm

\*Liquid Temp:-10 to +110c

\*304 Stainless Steel

\*Motor Output:0.37 to 2.2 KW (3ph)

\*Outlet Size:32 to 50mm

\*Head:3 to 18m

\*Working Pressure:-10 Bar

\*Applications:Suitable for many applications including

\*Water Supply \*Cooling Towers \*Booster Sets \*Washing Machines \*Heat Exchangers &

\*Boosting Water Flow

**High Temp Seals Available on request**

## Single Impeller Pumps CDX (EP-CDX)



\*Flow Rates:20 to 250 lpm

\*Liquid Temp:-10 to +90c

\*304 Stainless Steel

\*Motor Output:0.37 to 1.5 kw (1ph),0.37 to 1.8 kw (3ph)

\*Outlet Size:25mm

\*Head:12 to 41m

\* Working Pressure: 8 Bar

\*Applications:Suitable for many applications including

\*Water Supply \*Cooling Towers \*Booster Sets \*Washing Machines \*Heat Exchangers &

\*Boosting Water Flow

**High Temp Seals Available on request**

## 3 Series End Suction Pumps 3D (EP-CS3D)



\*Flow Rates:100 to 1200 lpm

\*Liquid Temp:-10 to +110c

\*Cast Iron

\*Motor Output:1.1 to 1.2 kw (1ph),1.1 to 11.0 kw (3ph)

\*Outlet Size:32to 50mm

\*Head:7 to 70m

\*Working Pressure: 10 Bar

\*Applications:Suitable for many applications including

\*Water Supply \*Dairy Washdown\*Boosting Waterflow

**High Temp Seals Available on request**

## Open Impeller Pumps DWO (EP-DWO)



\*Flow Rates:100 to 1100 lpm

\*Liquid Temp:-10 to +90c

\*304 Stainless Steel

\*Motor Output:1.1 to 1.5 kw 1ph),1.1 to 3.0 kw (3ph)

\*Max Solids:19mm

\*Outlet Size:50mm

\*Head:5 to 18m

\*Working Pressure: 8 Bar

\*Applications:Suitable for many applications including

\*Washing of Vegetables \*Washing Systems for Bottles,Crates \*Boosting Water Flow

**High Temp Seals Available on request**



# EBARA VERTICAL MULTISTAGE WATER PUMPS

## EMVS-16 Vertical Multistage Pumps



- \*304 or 316 Stainless Steel Body
- \*316 Stainless Steel Impeller
- \*Motor Output:0.37 to 18.5 KW (3ph)
- \*Head:Up to 240m
- \*Flow Rates:16 to 330 lpm
- \*Liquid Temp:-15 to +140c
- \*Working Pressure:-16 Bar

- \*Applications:Suitable for many applications including
- \*Pumping hot or cold water in HVAC systems
- \*Booster Pump \*Boiler feed systems
- \*Water Treatment Plants

**High Temp Seals Available on request**

## EMVS-10 Vertical Multistage Pumps



- \*Carbon Steel Body
- \*Liquid Temp:-10 to +90c
- \*Head:Up to 240m
- \*Motor Output:0.37 to 18.5 KW (3ph)
- \*316 Stainless Steel Impeller
- \*Flow Rates:16 to 330 lpm
- \*Working Pressure:-10 Bar

- \*Applications:Suitable for many applications including
- \*Pumping hot or cold water in HVAC systems
- \*Booster Pump \*Boiler feed systems
- \*Water Treatment Plants

**High Temp Seals Available on request**

# EBARA SUBMERSIBLE TRADE WASTE PUMPS

## DVS Cast Iron Submersible Semi Vortex Pumps (ESP-DVS)



- \*Flow Rates:40 to 1,000 Lpm
- \*Liquid Temp:-10 to +50c
- \*Max Solids:56mm
- \*Outlet Size:50-80mm
- \*Head:3 to 25m
- \*Submergence: 8 Meters
- \*Motor Output: 0.4 to 0.75 kW (1ph) , 0.75 to 3.7 kW (3ph)
- \*Cast Iron Body & Impeller, & Stainless 403 Shaft

- \*Applications: \*Abattoir Dairy and piggery washdown
- \*Waste water applications with soft or fibrous material

## DG Cast Iron Submersible Grinder Pump (ESP-DG)



- \*Liquid Temp:-10 to +50c
- \*Max Solids:40mm
- \*Outlet Size:40 & 50mm
- \*Submergence: 8 Meters
- \*Motor Output: 1.5 to 3.75 kW (3ph)
- \*Cast Iron Body & Impeller, & Stainless 403 Shaft

- \*Applications: \*Grey Waste Water Containing Solids
- \*Food Processing Waste

## Right Stainless Submersible Semi Vortex Pump (ESP-RSSVP)



- \*Flow Rates:40 to 300 Lpm
- \*Liquid Temp:-10 to +50c
- \*Max Solids:40mm
- \*Outlet Size:40mm
- \*Head:2 to 10m
- \*Submergence: 8 Meters
- \*Motor Output: 0.55 to 0.75 kW (1ph) , 0.55 to 0.75 kW (3ph)
- \*Stainless 304 Body, Impeller & Shaft

- \*Applications: \*Abattoirs \*Waste Water \*Food Waste
- \*Contaminated Water \*Chemical Waste

# ROBUSCHI TRADE WASTE VORTEX PUMPS

## HD Series



**Maximum flow rate:** 200 m<sup>3</sup>/h  
**Maximum pressure:** 8 BAR  
**Maximum temperature:** 120° C  
**Maximum head:** 60 mwc

HD pumps have the same interaxis of ISO 5199 chemical norm pumps, this means easy interchangeability. Casing & impeller manufactured with investment casting technology. Standard IEC motor with stub shaft design. Possibility to choose seal arrangement: single, double tandem, double back to back and packing gland. These pumps can handle aggressive organic & inorganic liquids in chemical industries. They are also used in general industrial service, foodstuff industry, water/solvent recovery process & trade waste.

## RC Series



**Maximum flow rate:** 800 m<sup>3</sup>/h  
**Maximum pressure:** 10 BAR  
**Maximum temperature:** 180° C  
**Maximum head:** 60 mwc

RC pumps are modular construction with bearing bracket in according to ISO 2858-5199. Discharge sizes from DN 32 to DN 250. Large free passage clearance up to 150 mm due to the completely recessed impeller. Heavy duty shaft and bearings. Only 4 bearing brackets for the whole range. Only 1 casing cover fits every seal arrangement. RC pumps can handle chemical crystalline suspensions, all viscous liquid, liquid with high concentrations of fibrous suspensions, municipal and industrial wastewater, every kind of sludge. They are also used in textile, tannery, refineries, general industrial service, pulp and paper industry, foodstuffs industry, sugar industry, sea water desalination plants, absorption equipment in environmental engineering & steel industry.

# ASHCROFT PRESSURE GAUGES

## Tri Clover Pressure Gauge

- \*Bottom or Rear Entry in 1.5" or 2.0"
- \*Stainless Case & Shell
- \*Up to 93c Operating Temp
- \*Up to 149c CIP Temp
- \*Liquid Filled
- \*PSI Measurement
- \*2.5 or 4" Face Size



SIZE	CODE
0-100 Psi	ASCPG-01
0-200 Psi	ASCPG-02
0-400 Psi	ASCPG-04
0-600 Psi	ASCPG-06
0-800 Psi	ASCPG-08
0-1000 Psi	ASCPG-010
0-1500 Psi	ASCPG-015
0-2000 Psi	ASCPG-020

## Tri Clover Pressure Gauge

- \*Bottom or Rear Entry in 1.5" /2.0" Tri Clover
- \*Stainless Case & Shell
- \*Up to 93c Operating Temp
- \*Up to 149c CIP Temp
- \*Liquid Filled
- \*Bar Measurement
- \*2.5 or 4" Face Size



SIZE	CODE
0-1 Bar	ASCG-B-01
0-1.6 Bar	ASCG-B-016
0-2.5 Bar	ASCG-B-025
0-4 Bar	ASCG-B-04
0-6 Bar	ASCG-B-06
0-10 Bar	ASCG-B-010
0-16 Bar	ASCG-B-016
0-25 Bar	ASCG-B-025
0-40 Bar	ASCG-B-040
0-60 Bar	ASCG-B-060
0-100 Bar	ASCG-B-100

## Threaded Pressure Gauge

- \*Bottom Entry in 1/2" BSP/ NPT
- \*Up to 93c Operating Temp
- \*Stainless Case & Shell
- \*Liquid or Dry Filled
- \*KPA Measurement
- \*2.5" or 4" Face



SIZE	CODE
0-50 kpa	ASTKG-050
0-100 kpa	ASTKG-100
0-200 kpa	ASTKG-200
0-400 kpa	ASTKG-400
0-600 kpa	ASTKG-600
0-800 kpa	ASTKG-800
0-1000 kpa	ASTKG-1000
0-2000 kpa	ASTKG-2000
0-4000 kpa	ASTKG-4000

## Threaded Pressure Gauge

- \*Bottom Entry in 1/2" BSP/ NPT
- \*Up to 93c Operating Temp
- \*Stainless Case & Shell
- \*Liquid or Dry Filled
- \*Bar Measurement
- \*2.5" or 4" Face



SIZE	CODE
0-0.6 Bar	ASTBPG-06
0-1 Bar	ASTBPG-01
0-2 Bar	ASTBPG-02
0-2.5 Bar	ASTBPG-25
0-4 Bar	ASTBPG-04
0-6 Bar	ASTBPG-06
0-8 Bar	ASTBPG-08
0-10 Bar	ASTBPG-010
0-16 Bar	ASTBPG-016

**\*PSI available on request**

# ASHCROFT BI METAL THERMOMETER

## EI Series



The Ashcroft EI bimetallic thermometer provides high quality & performance.

### Features

- \*Robust, hermetically sealed stainless steel case
- \*External adjustment allows quick, limited span adjustments; reduces maintenance and recalibration costs
- \*Maxivision<sup>®</sup> dial for easy readability and parallax elimination

### Specifications

- \*Accuracy:  $\pm 1\%$  full scale ASME B40.200 (B40.3 Grade A)
- \*Dial size: 2", 3" and 5"
- \*Everyangle<sup>™</sup>, rear and lower connections
- \*Silicone dampened coil
- \*NEMA 4X / IP66 enclosure
- \*-50 to 500c Temp Range

The Ashcroft<sup>®</sup> flanged thermowell is used when pressure, high velocity and corrosive process media exist. This serves to isolate and protect the sensing instrument, and permits removal of a sensing instrument without shutting down the process. Thermowells are offered in a wide selection of materials, sizes and dimensions; a perfect solution for protecting the process and extending product service life.

## Flanged Thermowell



### Specifications

- \*Raised face, flat face and ring joint versions (ASME B16.5)
- \*Process connection: 1", 1 1/2" and 2"
- \*Flange ratings: 150, 300, 600, 900, 1500 and 2500 class

# SICK PRESSURE SENSORS

## PBSH Series Hygienic Compact Pressure Switch

The electronic pressure switch PBS Hygienic has been designed for use in the food & beverage industry. The wetted parts are gap-free and have no dead spaces. Their high-quality stainless steel surfaces are smooth and easy to clean. The highly resistant stainless steel membrane is welded to the hygienic process connection without gaps or edges. The device is designed for CIP and SIP processes. This enables safe hygienic operation in conjunction with optimized system throughout. The PBS Hygienic is available with up to two switching outputs, an analog output and IO-Link in a single device. Its intuitive configuration via three large pushbuttons & display facilitates operation. The housing can be rotated in two ways, allowing the display & electrical connection to be aligned according to specific installation situation. Available with a variety of measuring ranges and process connections, the PBS Hygienic is suitable for universal use.



### Applications

- \*Hygienic pressure measurement & monitoring in the food industry
- \*Bottle filling machines
- \*Packaging machines
- \*Hydrostatic level measurement of liquids in tall tanks

- \*Hygienically-graded pressure switch with display for the food and beverage industry
- \*Pressure values are indicated on the display
- \*Unit of pressure value in the display can be switched
- \*Wetted parts are made from stainless steel
- \*Individually programmable switching outputs and analog output
- \*Output states are indicated separately via large LEDs
- \*IO-Link
- \*Wetted parts are made from stainless steel
- \*Process temperature up to 180 °C

## PBS Series Universal Pressure Switch

The PBS is an electronic pressure switch, pressure transmitter & display in one. It is available with up to two switching output, analog output and IO-Link in a single device. Its intuitive configuration via three large pushbuttons & display facilitates operation. The housing can be rotated in two ways. This means that the display & electrical connection can be aligned to match the specific installation situation. The PBS can be utilized in a wide range of applications due to its gauge pressure measuring ranges between 0 bar - 1 bar and 0 bar - 600 bar. In addition, absolute pressure and compound measuring ranges are available. The PBS features a fully welded stainless steel membrane, making it suitable for use with a host of corrosive media.



### Applications

- \*Measuring pressure, level, and temperature in industrial applications
- \*Measuring pressure, level, and temperature in machine hydraulics

# SICK PRESSURE SENSORS

## PHT Pressure Transmitter

With its flush-mounted stainless steel membranes and large range of hygienic process connectors, the PHT pressure transmitter is ideal for demanding hygienic applications in the food and beverage, pharmaceutical & cosmetics industries. With enhanced process temperatures, resistance to corrosive fluids, cavity-free design with hygienically-graded process connections, the PHT is distinguished by its outstanding functionality and certifications issued by EHEDG and 3-A Sanitary Standards, Inc.



### Applications

- \*Pressure measurement in the feed of a CIP tank
- \*Pressure measurement in buffer tanks of bottling machines

- \*Flush-mounted, hermetically sealed stainless steel membrane with roughness  $Ra < 0.4 \mu m$
- \*Wetted parts stainless steel 1.4435, housing stainless steel 1.4571
- \*Large range of hygienic process connectors
- \*CIP/SIP resistant
- \*Stainless steel housing with enclosure rating of up to IP 68
- \*Process temperature up to  $150^{\circ}C$
- \*0 to 0.25bar up to 0 to 25bar Pressure Range

## PBT Pressure Transmitter

The PBT is a universal electronic pressure transmitter used in general industrial applications for pressure measurement of liquid and gaseous fluids. Suitable for standard measuring applications in machine and plant engineering, pressure control systems, hydraulics, pneumatics, etc., it supports a wide variety of configurations. and can thus provide the perfect match for individual customer requirements. Its precise and rugged measurement technology, compact dimensions, and quick and simple installation set the PBT apart as a genuinely talented all-rounder.



### Applications

- \*Pressure measurement in the hydraulic cylinder
- \*Monitoring the pressing pressure
- \*Pressure monitoring during material transportation

- \*Circularly welded, hermetically sealed stainless steel membrane
- \*No mechanical moving parts. Hence no wear, fatigue, or maintenance
- \*Relative, absolute, and  $\pm$  measuring ranges
- \*Pressure measurement ranges from 0 bar ... 1 bar up to 0 bar ... 600 bar
- \*Process temperature up to  $80^{\circ}C$
- \*Output signal 4 mA ... 20 mA, 0 V ... 5 V or 0 V ... 10 V

# SICK TEMPERATURE SENSORS

## THTE Temperature Sensor

The THTE temperature sensor is a hygienically-graded Pt100 resistance thermometer for use in applications in the food and beverage, pharmaceutical, cosmetics, and biotechnology industries. With the help of a thermowell that protrudes into the process, the sensor can be exchanged “dry”. That means that the vessel remains closed & potential hygienic risks are minimized. The thermowell is available in multiple insertion lengths and is installed at the vessel by common hygienically-graded process connections. High-grade stainless steel and a gap- and crevice-free design enable safe and clean processing. The THTE is well suited for CIP and SIP processes. This enables safe hygienic operation in conjunction with optimized equipment availability. Besides its direct electrical connection to the Pt100 element, the THTE is available with an integrated transmitter with 4 mA ... 20 mA output signal.



### Applications

- \*Measurement of temperature in supply tanks for bottling systems
- \*Temperature monitoring & control in the food & beverage industry
- \*Hygienic temperature measurement in vessels and pipes
- \*Temperature measurement in the cosmetics industry

- \*Wetted parts: corrosion-resistant stainless steel 316L/1.4435, Ra ≤ 0.8 µm
- \*Sensor probe spring-loaded in protective pipe
- \*Hygienic process connections
- \*Measuring ranges –50 °C ... +150 °C and –50 °C ... +250 °C
- \*Pt100, accuracy class A (IEC 60751)
- \*Pt100 (4-conductor) or 4 mA .. 20 mA (2-conductor)

## THTS Temperature Sensor

The THTS temperature sensor is a compact, hygienically-graded, cost-effective Pt100 resistance thermometer. It is designed for applications in the food and beverage industry as well as in the cosmetics and pharmaceutical segment. Due to the use of high-grade stainless steel and a crevice-free design of the wetted parts, stringent hygienic requirements are met. The range of common hygienic process connections that are welded gap-free to the connection housing and multiple insertion lengths allow universal use. The THTS is well suited for CIP and SIP processes. This enables safe hygienic operation in conjunction with optimized system availability. Besides its direct electrical connection to the Pt100 element, the THTS is available with an integrated transmitter with 4 mA ... 20 mA output signal.



### Applications

- \*Temperature measurement at the heat exchanger of a CIP system
- \*Temperature monitoring & control in the food & beverage industry
- \*Hygienic temperature measurement in vessels and pipes
- \*Temperature measurement in the cosmetics industry

- \*Wetted parts: corrosion-resistant stainless steel 316L/1.4435, Ra ≤ 0.8 µm
- \*Sensor probe spring-loaded in protective pipe
- \*Hygienic process connections
- \*Measuring ranges –50 °C ... +150 °C and –50 °C ... +250 °C
- \*Pt100, accuracy class A (IEC 60751)
- \*Pt100 (4-conductor) or 4 mA .. 20 mA (2-conductor)



## CHADSTONE MEASUREMENT & INSTRUMENTATION

### Tri Clover Pressure Gauge

- \*Bottom or Rear Entry in 1.5" or 2.0"
- \*Stainless Case & Shell
- \*Up to 93c Operating Temp
- \*Up to 120c CIP Temp
- \*Liquid Filled
- \*Bar Measurement
- \*2.5" Face Size



SIZE	CODE
0-2 Bar	CCPG-02B
0-4 Bar	CCPG-04B
0-6 Bar	CCPG-06B
0-10 Bar	CCPG-10B

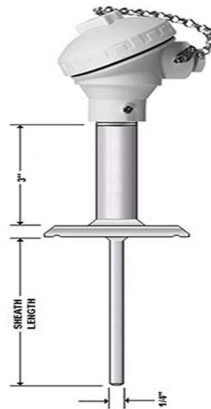
### Tank Bi Metal Thermometer

- \*Rear Entry in BSP or Tri Clamp Thread
- \*Stainless Case & Shell
- \*Various Temp Ratings
- \*5" Face Size
- \*Stem Size Options



### RTD Sensor

- \*SS316L wetted parts
- \*1" / 1.5" / 2" Triclover connections
- \*-50 to 250°C range



# INOXPA SANITARY FILTERS



### Side Entry Angular Filter

- \*316 Stainless
- \*EPDM Gasket
- \*145 PSI (10 Bar)
- \*-10 to 145c

SIZE	CODE
25mm	ISEAF-025
40mm	ISEAF-040
50mm	ISEAF-050
65mm	ISEAF-065
80mm	ISEAF-080
100mm	ISEAF-100

### Top Entry Angular Filter

- \*316 Stainless
- \*EPDM Gasket
- \*145 PSI (10 Bar)
- \*-10 to 145c

SIZE	CODE
25mm	ITEAF-025
40mm	ITEAF-040
50mm	ITEAF-050
65mm	ITEAF-0635
80mm	ITEAF-080
100mm	ITEAF-100

### Y Type Filter

- \*316 Stainless
- \*EPDM Gasket
- \*145 PSI (10 Bar)
- \*-10 to 145c

SIZE	CODE
25mm	IYTF-025
40mm	IYTF-040
50mm	IYTF-050
65mm	IYTF-065
80mm	IYTF-080
100mm	IYTF-100

**\*Filters are available with Weld, BSM, Din or Tri Clover Ends**

# CHADSTONE SANITARY FILTERS

## Tri Clover Top In Line Filter

- \*316 Stainless
- \*EPDM Gasket
- \*145 PSI (10 Bar)
- \*-10 to 145c



SIZE	CODE
25mm	CITF-025
40mm	CITF-040
50mm	CITF-050
65mm	CITF-065
80mm	CITF-080
100mm	CITF-100

## Tri Clover Side Entry Filter

- \*316 Stainless
- \*EPDM Gasket
- \*145 PSI (10 Bar)
- \*-10 to 145c



SIZE	CODE
25mm	CCSEF-025
40mm	CCSEF-040
50mm	CCSEF-050
65mm	CCSEF-065
80mm	CCSEF-080
100mm	CCSEF-100

## Tri Clover In Line Y Type Filter

- \*316 Stainless
- \*EPDM Gasket
- \*145 PSI (10 Bar)
- \*-10 to 145c

SIZE	CODE
25mm	CCYTF-025
40mm	CCYTF-040
50mm	CCYTF-050
65mm	CCYTF-065
80mm	CCYTF-080
100mm	CCYTF-100

## Duplex Filter System

- \*316 Stainless Filters (2)
- \*Manual Butterfly Valves (4)
- \*Tee Piece (2)
- \*EPDM Gasket
- \*145 PSI (10 Bar)
- \*-10 to 120c



SIZE	CODE
25mm	CCDFS-025
40mm	CCDFS-040
50mm	CCDFS-050
65mm	CCDFS-065
80mm	CCDFS-080
100mm	CCDFS-100